

# MODEL: CK-400

SINGLE NEEDLE, UNISON-FEED, CYLINDER BED, LOCKSTITCH  
MACHINE FOR EXTRA HEAVY-WEIGHT MATERIALS

單針極厚筒型綜合送料縫紉機

---

## PARTS LIST

零件冊



**Chikon Industrial Sewing Machine Co., Ltd.**

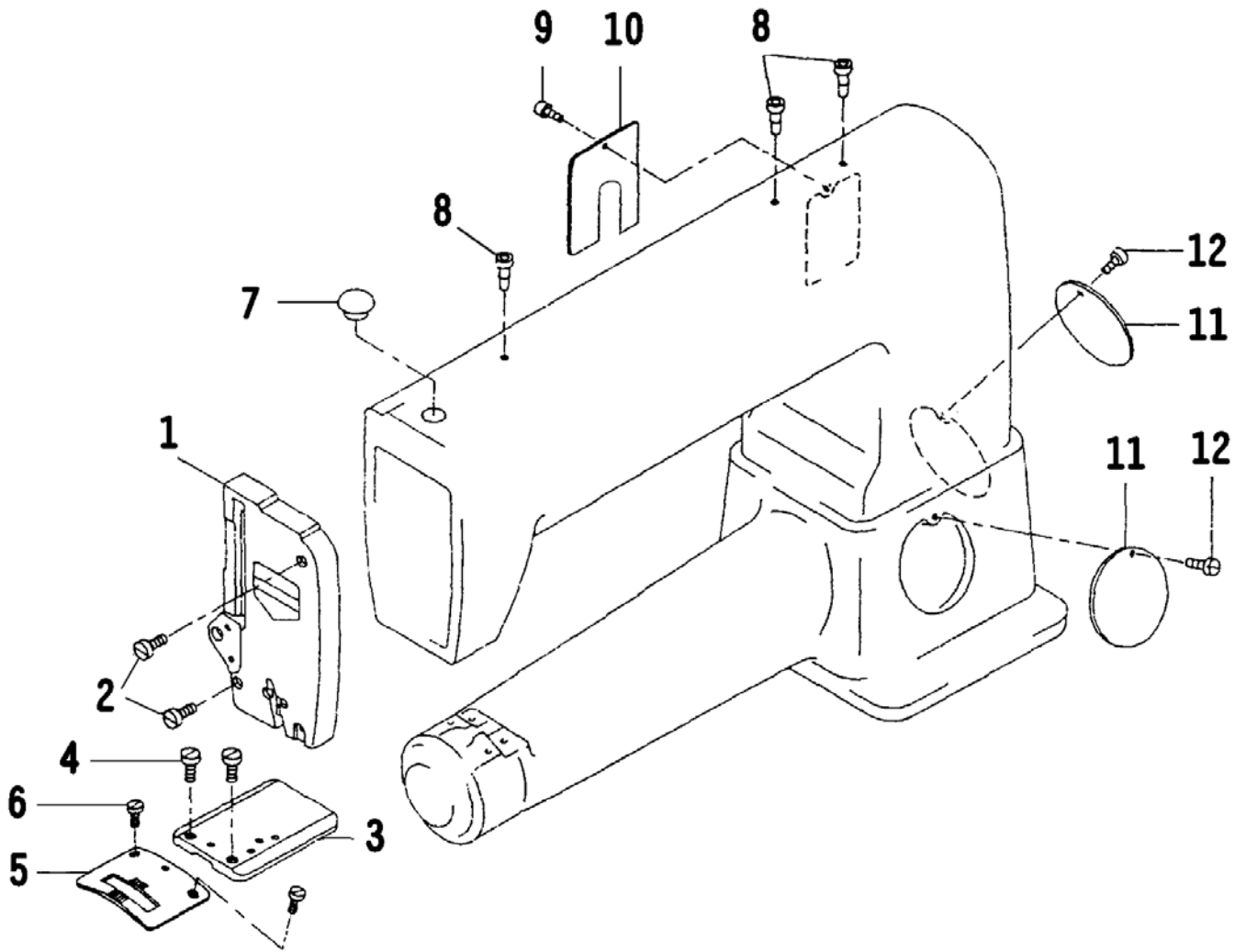
2011-07

# CONTENS 目錄

1. FRAME & MISCELLANEOUS COVER COMPONENTS .....	1
頭部, 外裝機構	
2. MAIN SHAFT COMPONENTS .....	2
上軸機構	
3. NEEDLE BAR & UPPER FEED MECHANISM COMPONENTS (1/2) .....	4
針棒, 上送齒機構 (1/2)	
4. NEEDLE BAR & UPPER FEED MECHANISM COMPONENTS (2/2) .....	6
針棒, 上送齒機構 (2/2)	
5. PRESSURE BAR COMPONENTS .....	8
押棒機構	
6. FEED MECHANISM COMPONENTS .....	10
送齒機構	
7. HOOK DRIVING SHAFT COMPONENTS .....	12
下軸機構	
8. TENSION POST COMPONENTS .....	14
線調整器機構	
9. KNEE LIFTER COMPONENTS .....	16
提升桿機構	
10. BELT COVER, TABLE & STAND COMPONENTS (OPTIONAL PARTS) .....	17
皮帶蓋, 車板, 車腳機構(選購品)	
11. ACCESSORIES PARTS COMPONENTS .....	18
附屬品機構	
12. NUMERICAL INDEX OF PARTS .....	20
零件索引	
13. INSTRUCTION MANUAL .....	23
操作手冊	

# 1. FRAME & MISCELLANEOUS COVER COMPONENTS

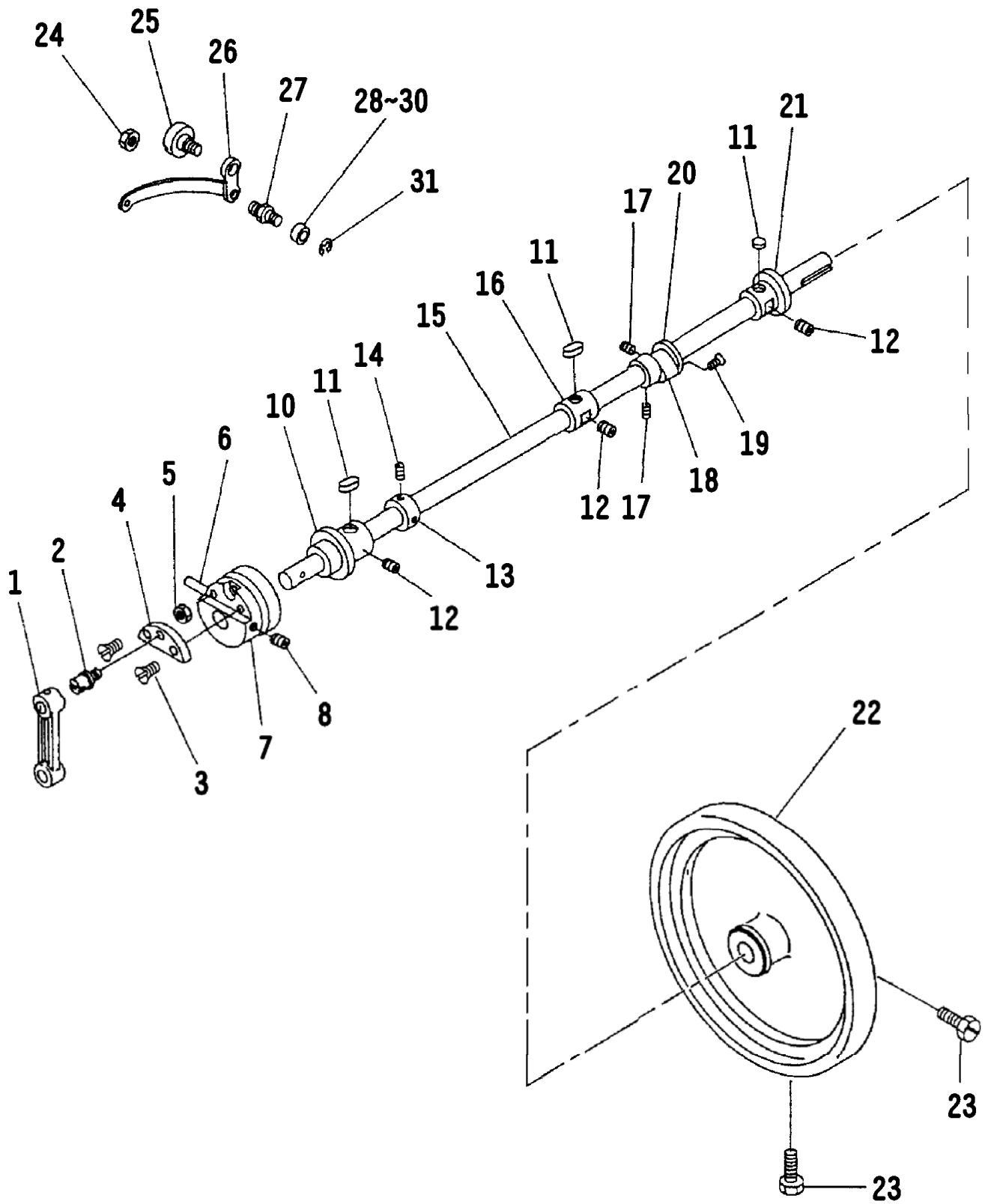
頭部, 外裝機構



REF. NO.	NOTE	PART NO.	DESCRIPTION	名稱	AMT.
1		210-90253	FACE PLATE ASM.	面板	1
2		SS-6151920-SP	SCREW 15/64-28 L=19.0	螺絲	2
3		211-51006	BED SLIDE	角板	1
4		SS-7111110-TP	SCREW 11/64-40 L=9.0	螺絲	2
5		211-60205	THROAT PLATE	針板	1
6		SS-7120910-SP	SCREW 3/16-28 L=9.0	螺絲	2
7		TA-1250406-R0	RUBER PLUG	油塞	2
8		B1156-026-000	OIL PIPE	油管	3
9		SS-7090710-SP	SCREW 9/64-40 L=7.0	螺絲	1
10		211-60106	SIDE PLATE, B	側面板	1
11		211-33004	SIDE COVER	底座側面板	2
12		441-0112	SCREW 9/64-40 L=9.0	螺絲	2

## 2. MAIN SHAFT COMPONENTS

上軸機構



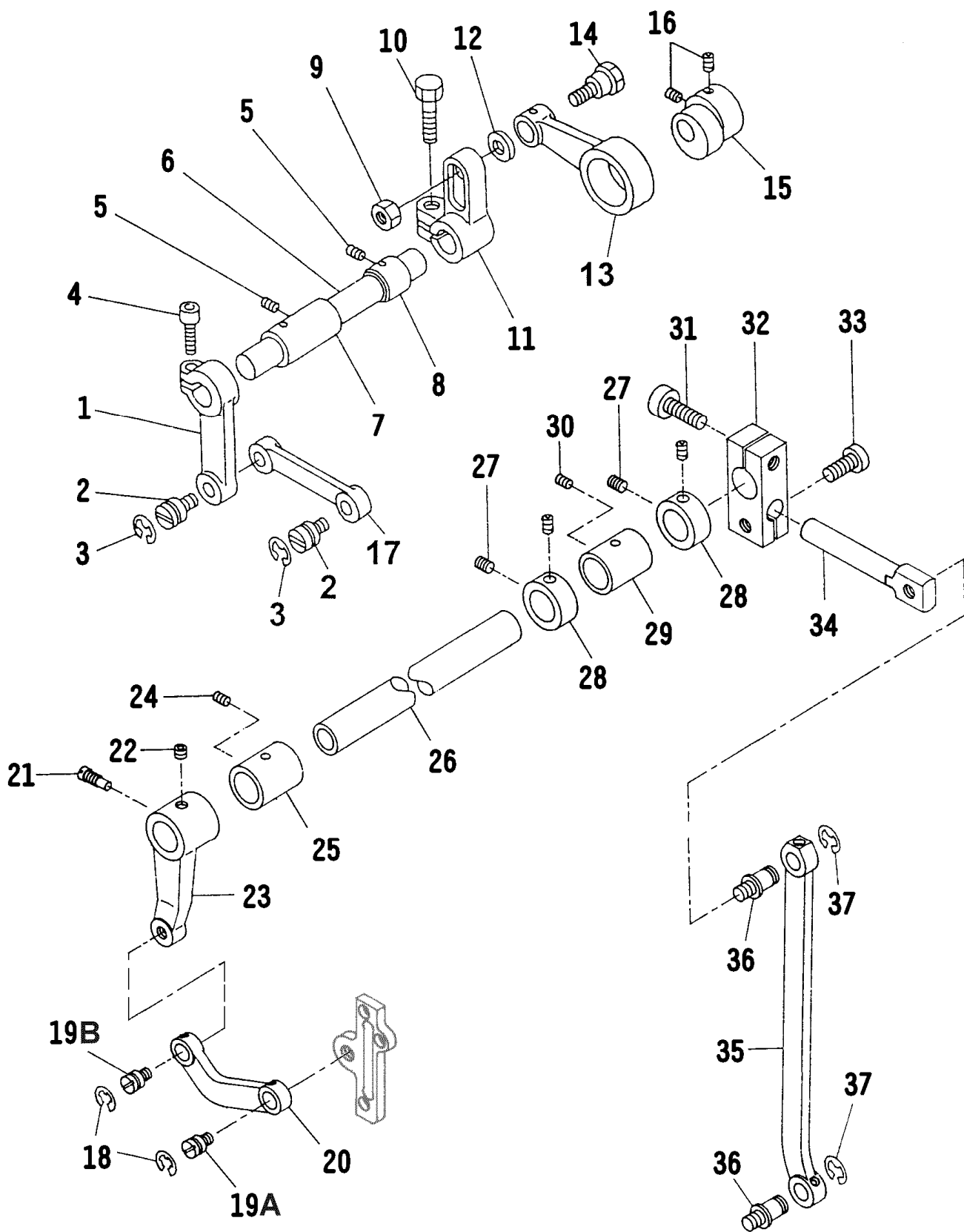
REF. NO.	NOTE	PART NO.	DESCRIPTION	名稱	AMT.
1		210-91707	CRANK ROD	針棒連接器	1
2		210-45604	NEEDLE BAR CRANK SHAFT	連接軸	1
3		SS-1681140-SP	SCREW 9/32-28 L=11.0	螺絲	2
4		210-45109	CRANK PLATE	天平凸輪連接座	1
5		NS-6680410-SP	NUT 9/32-28	螺帽	1
6		PT-0405600-SH	TAPER PIN 4x55	錐度銷	1
7		210-44904	CAM	天平凸輪	1
8		SS-8660612-TP	SCREW 1/4-40 L=6.0	螺絲	2
10		210-44607	MAIN SHAFT BUSHING, FRONT	上軸套筒(前)	1
11		210-45406	FELT	羊毛氈	3
12		SS-8151550-SP	SCREW 15/64-28 L=15.0	螺絲	3
13		210-45703	THRUST COLLAR	上軸定環	1
14		SS-8660610-TP	SCREW 1/4-40 L=6.0	螺絲	2
15		210-44508	MAIN SHAFT	上軸	1
16		210-44706	MAIN SHAFT BUSHING, CENTER	上軸套筒(中)	1
17		SS-8150710-SP	SCREW 15/64-28 L=7.0	螺絲	2
18		211-51402	FEED CAM	偏心輪	1
19		SS-2110915-SP	SCREW 11/64-40 L=6.8	螺絲	2
20		210-45505	SIDE PLATE	側板	1
21		210-44805	MAIN SHAFT BUSHING, REAR	上軸套筒(後)	1
22		210-40555	HAND WHEEL ASM.	皮帶輪組	1
23		SS-9702110-SP	SCREW 5/16-24 L=21.0	螺絲	2
24		NS-6680410-SP	NUT 9/32-28	螺帽	1
25		SD-1070901-TP	HINGE SCREW 5/16-24	螺絲	1
26		210-91806	THREAD TAKE-UP LEVER	天平	1
27		210-46305	ROLLER STUD	滾輪固定軸	1
28		105-19502	ROLLER	滾輪	1
29	#01	210-46107	ROLLER	滾輪	(1)
30	#01	210-46206	ROLLER	滾輪	(1)
31		RE-0400000-K0	E-RING (4MM)	E 型扣環	1

Note: #01..... Selective Parts

替換品

3. NEEDLE BAR & UPPER FEED MECHANISM COMPONENTS (1/2)

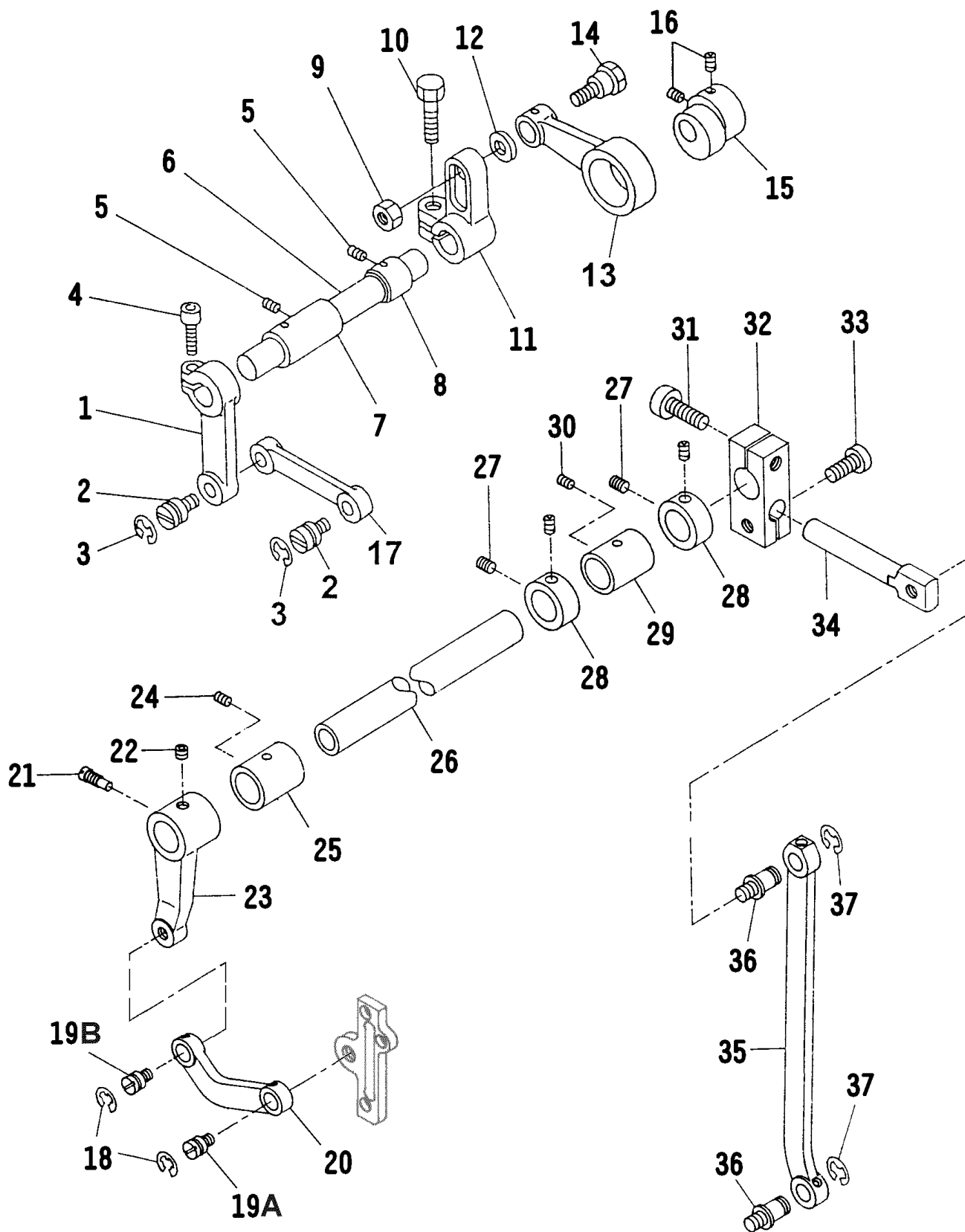
針棒, 上送齒機構 (1/2)



REF. NO.	NOTE	PART NO.	DESCRIPTION	名 稱	AMT.
1		210-49408	DRIVING SHAFT ARM. FRONT	上送軸柄	1
2		210-48707	HINGE SCREW 9/32-28 L=5.5	螺絲	2
3		RE-0800000-K0	E-RING (8MM)	E 型扣環	2
4		SM-6061552-TP	SCREW M6x1 L=15.0	螺絲	1
5		SS-8150710-SP	SCREW 15/64-28 L=7.0	螺絲	2
6		210-49606	FEED ROCKER SHAFT	上送軸	1
7		210-49705	BUSHING, FRONT	上送軸套筒(前)	1
8		210-49804	BUSHING, REAR	上送軸套筒(後)	1
9		NS-6720440-SP	NUT 11/32-28	螺帽	1
10		SS-9201813-CP	SCREW 5/16-18 L=18.0	螺絲	1
11		210-49507	DRIVING SHAFT ARM. REAR	上送軸曲柄	1
12		210-50109	WASHER	平墊圈	1
13		210-49309	CONNECTING ROD	連桿	1
14		210-50000	HINGE SCREW 11/32-28	螺絲	1
15		210-49200	CAM	偏心輪	1
16		SS-8660610-TP	SCREW 1/4-40 L=6.0	螺絲	2
17		210-49903	ROD	搖軸連桿	1
18		RE-0800000-K0	E-RING (8MM)	E 型扣環	2
19A		210-48707A	HINGE SCREW 9/32-28 L=4.5	螺絲	1
19B		210-48707B	HINGE SCREW 5/16-24	螺絲	1
20		210-93000	FRAME DRIVING LINK	針棒座連接桿	1
21		SS-7151550-SP	SCREW 15/64-28 L=14.5	螺絲	1
22		SS-8660512-TP	SCREW 1/4-40 L=5.0	螺絲	1
23		210-92804	DRIVING SHAFT FRONT ARM	中軸連桿(前)	1
24		SS-8150710-SP	SCREW 15/64-28 L=7.0	螺絲	1
25		210-92606	DRIVING SHAFT FRONT METAL	中軸套筒(前)	1
26		210-92507	DRIVING SHAFT	中軸	1
27		SS-8660510-TP	SCREW 1/4-40 L=4.5	螺絲	4
28		CS-1801211-SH	THRUSH COLLAR D=18 W=12	定環	2
29		210-92705	BUSHING, REAR	中軸套筒(後)	1
30		SS-8150710-SP	SCREW 15/64-28 L=7.0	螺絲	1
31		SS-9202443-CP	SCREW 5/16-18 L=24.0	螺絲	1
32		211-61609	DRIVING SHAFT REAR ARM. A	中軸連桿(後)	1
33		SS-9201813-CP	SCREW 5/16-18 L=18.0	螺絲	1
34		211-61708	DRIVING SHAFT REAR ARM. B	中軸連桿銷(後)	1
35		211-61807	NEEDLE BAR FRAME DRIVING ROD	連桿	1
36		B1424-158-000	HINGE SCREW 5/16-24	螺絲	2
37		RE-0800000-K0	E-RING (8MM)	E 型扣環	2

#### 4. NEEDLE BAR & UPPER FEED MECHANISM COMPONENTS (2/2)

針棒, 上送齒機構 (2/2)

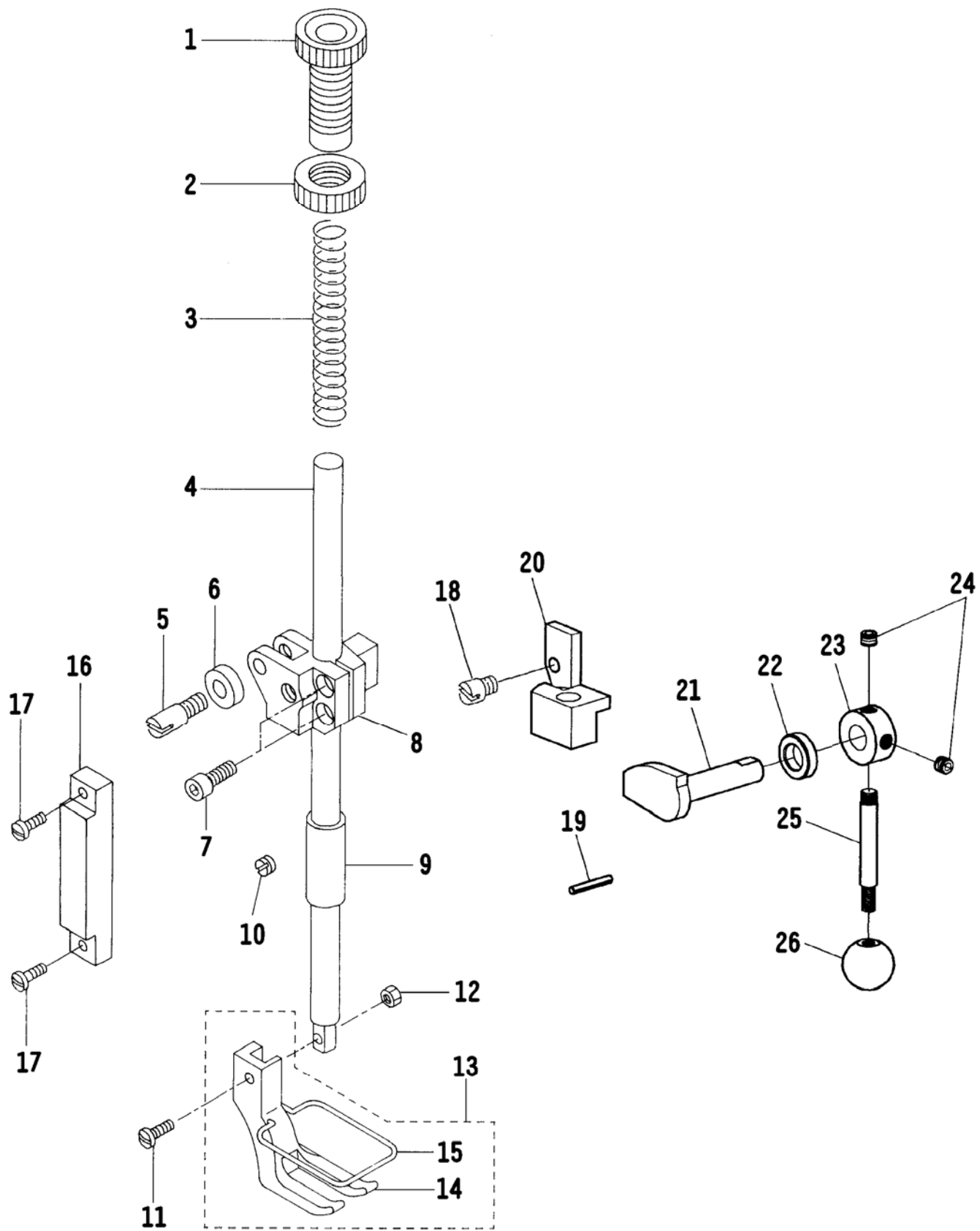




REF. NO.	NOTE	PART NO.	DESCRIPTION	名 稱	AMT.
1		RE-0800000-K0	E-RING (8MM)	E 型扣環	2
2		210-48707	HINGE SCREW	螺絲	2
3		210-93901	L-LINK	L 型連桿	1
4		210-94008	UPPER FEED FRAME DRIVING LINK	連桿	1
5		210-94701	UPPER FEED BAR	內押棒	1
6		210-94107	WALKING FOOT	內押腳	1
7		SS-7110840-SP	SCREW 11/64-40 L=8.0	螺絲	1
8		SS-7110540-SP	SCREW 11/64-40 L=5.0	螺絲	3
9		210-94800	UPPER FEED BAR PIN	押腳棒固定螺絲	1
10		210-94909	UPPER FEED BAR GUIDE	押腳棒固定板	1
11		CQ-2020000-00	OIL WICK	油線	0.2
12		210-93406	FRAME DRIVING BASE SHAFT	針棒固定軸	1
13		210-92101	FRAME DRIVING BASE	針棒座	1
14		210-93505	FRAME DRIVING BASE SHAFT METAL	固定軸套筒	1
15		SM-8061012-TP	SCREW M6x1 L=10.0	螺絲	1
16		SM-8061212-TP	SCREW M6x1 L=12.0	螺絲	1
17		SS-8660522-TP	SCREW 1/4-40 L=4.5	螺絲	2
18		210-92309	NEEDLE BAR CONNECTION	針棒鉗	1
19		441-0419	NEEDLE BAR	針棒	1
20		441-0420	NEEDLE BAR THREAD GUIDE	針棒線掛	1
21		SS-6110710-TP	SCREW 11/64-40 L=5.0	螺絲	1
22		MC-5320023-00	NEEDLE (749 NM=230)	針	1
23		SS-7151120-SP	SCREW 15/64-28 L=10	螺絲	1
24		SS-7111120-SP	SCREW 11/64-40 L=10	螺絲	1
25		210-92200	PRESSURE PLATE	固定板	1
26		210-93208	PRESSURE PLATE	固定板	1
27		SM-6061552-TP	SCREW M6x1 L=15.0	螺絲	1
28		SM-8061212-TP	SCREW M6x1 L=12.0	螺絲	2
29		210-93307	PRESSURE SHAFT	調節軸	1
30		210-93604	FRAME DRIVING BASE GUIDE	針棒調節器	1
31		441-0431	SPRING WASHER 6.8x10.8x1.5	彈簧墊圈	1

# 5. PRESSURE BAR COMPONENTS

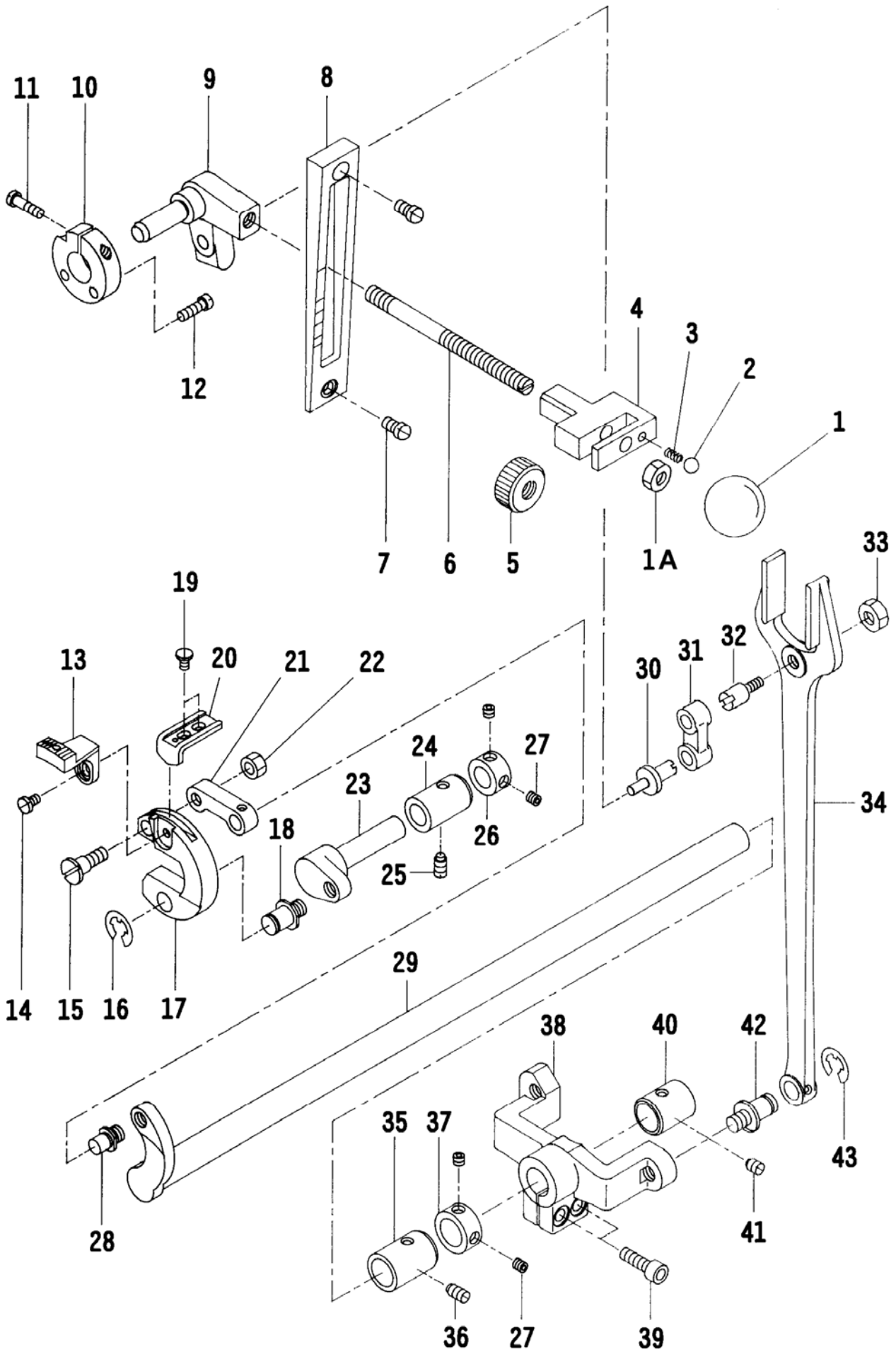
押棒機構



REF. NO.	NOTE	PART NO.	DESCRIPTION	名 稱	AMT.
1		210-50703	PRESSER ADJUSTING SCREW	押棒螺絲型套筒	1
2		210-51305	NUT 5/8-28	調整螺帽	1
3		210-50802	PRESSER SPRING	壓縮彈簧	1
4		210-50505	PRESSER BAR	押棒	1
5		210-51800	GUIDE NUT	滾輪軸	1
6		210-51701	ROLLER FOLLOWER	滾輪	1
7		SS-6121210-SP	SCREW 3/16-28 L=12.0	螺絲	2
8		210-95005	PRESSER BAR GUIDE BRACKET	押棒提昇器	1
9		210-50604	PRESSER BAR BUSHING	押棒套筒	1
10		SS-8150410-SP	SCREW 15/64-28 L=4.0	螺絲	1
11		SS-7091410-SP	SCREW 9/64-40 L=13.5	螺絲	1
12		NS-6090310-SP	NUT 9/64-40	螺帽	1
13		210-95153	PRESSER FOOT ASM.	外押腳組	1
14		210-95104	PRESSER FOOT	外押腳	(1)
15		210-97506	GUARD	護手環	(1)
16		210-51503	GUIDE PLATE	導板	1
17		SS-7621040-SP	SCREW 3/16-32 L=10	螺絲	2
18		SS-6660622-TP	SCREW 1/4-40 L=4.5	螺絲	1
19		PS-0300201-KP	SPRING PIN 3x20	彈簧銷	1
20		210-51008	HAND LIFTER LINK	押棒提升座	1
21		210-51107	HAND LIFTER CAM	押棒提升偏心軸	1
22		B1662-562-000	COLLAR	定環	1
23		210-51602	THRUST COLLAR	定環	1
24		SS-8660522-TP	SCREW 1/4-40 L=4.5	螺絲	2
25		210-51206	HAND LIFTER LEVER	押棒提桿	1
26		210-51404	GRIP	押棒提桿膠球	1

6. FEED MECHANISM COMPONENTS

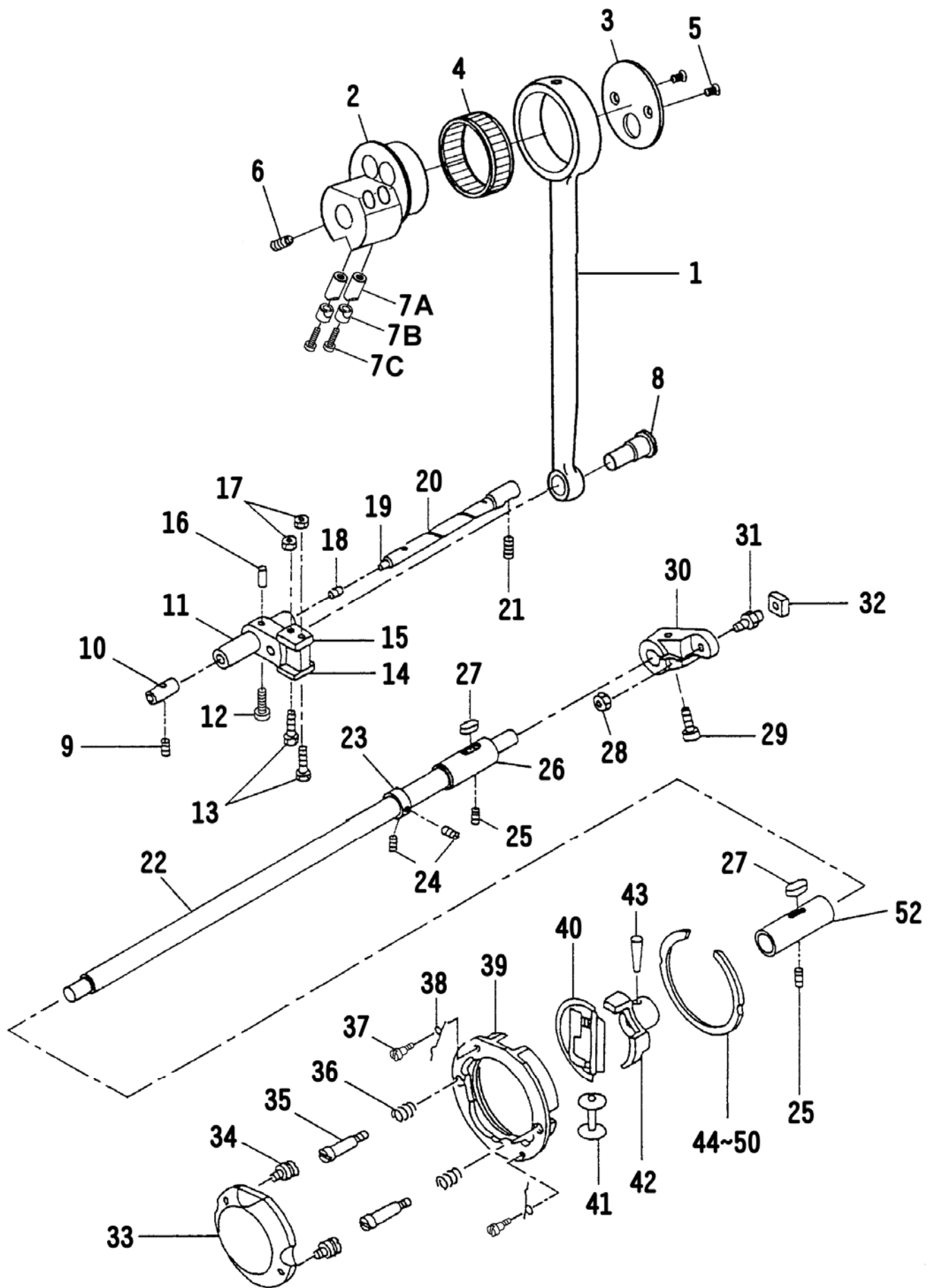
送齒機構



REF. NO.	NOTE	PART NO.	DESCRIPTION	名 稱	AMT.
1		210-54507	LEVER GRIP	調節桿膠球	1
1A		NM-6080001-SE	NUT M8x1.25	螺帽	1
2		210-54903	BALL	鋼珠	1
3		210-54804	SPRING	壓縮彈簧	1
4		210-54606	LEVER	倒縫槓桿	1
5		210-54705	NUT M8x1.25	縫目調節環	1
6		210-54408	LEVER SHAFT	縫目調整桿	1
7		SS-7150940-SP	SCREW 15/64-28 L=9.0	螺絲	2
8		211-52905	SIDE COVER	刻度板	1
9		211-52806	FEED REGULATOR	送料調節器	1
10		211-53903	SUPPORT PLATE	固定座	1
11		SS-6621840-SP	SCREW 3/16-32 L=18.0	螺絲	1
12		SS-6121610-SP	SCREW 3/16-28 L=15.0	螺絲	2
13		211-62300	FEED DOG	送料齒	1
14		SS-7110840-SP	SCREW 11/64-40 L=8.0	螺絲	1
15		SD-0790801-SP	HINGE SCREW D=7.94 H=8.0	螺絲	1
16		RE-0800000-K0	E-RING (8MM)	E 型扣環	1
17		211-51907	FEED BAR	送料台	1
18		210-26901	HINGE SCREW D=7.94 H=8.0	螺絲	1
19		SS-6110610-TP	SCREW 11/64-40 L=6.0	螺絲	2
20		211-53705	FEED BAR PRESSURE	送料台壓板	1
21		211-52004	FEED BAR LINK	送料台連接棒	1
22		NS-6160520-SP	NUT 1/4-24	螺帽	1
23		211-52103	DRIVING SHAFT	上下送料軸	1
24		211-53606	DRIVING SHAFT BUSHING	上下送料軸套筒	1
25		SS-8151150-SP	SCREW 15/64-28 L=10.5	螺絲	1
26		CS-1111019-SH	THRUST COLLAR D=11.11 W=10.0	定環	1
27		SS-8660330-SP	SCREW 1/4-40 L=3.0	螺絲	4
28		211-53804	HINGE SCREW D=7.94 H=8.0	螺絲	1
29		211-52251	FEED ROCK SHAFT ASM.	搖動軸	1
30		B1618-241-H00	ECCENTRIC PIN	偏心軸	1
31		B1619-241-H00	FEED CONNECTING LINK	連桿	1
32		B1617-241-H00	HINGE SCREW	螺絲	1
33		NS-6680410-SP	NUT 9/32-28	螺帽	1
34		211-52707	ROD	連接叉桿	1
35		211-52400	BUSHING, FRONT	搖動軸套筒(前)	1
36		SS-8151150-SP	SCREW 15/64-28 L=11.0	螺絲	1
37		CS-1471012-SH	THRUST COLLAR D=14.73 W=10.0	定環	1
38		211-62003	FEED ROCK SHAFT CRANK	連結轉換器	1
39		SM-6061802-TP	SCREW M6x1 L=18.0	螺絲	2
40		211-52509	BUSHING, REAR	搖動軸套筒(後)	1
41		SS-8150750-SP	SCREW 15/64-28 L=7.0	螺絲	1
42		B1424-158-000	HINGE SCREW 5/16-24	螺絲	1
43		RE-0800000-K0	E-RING (8MM)	E 型扣環	1

7. HOOK DRIVING SHAFT COMPONENTS

下軸機構



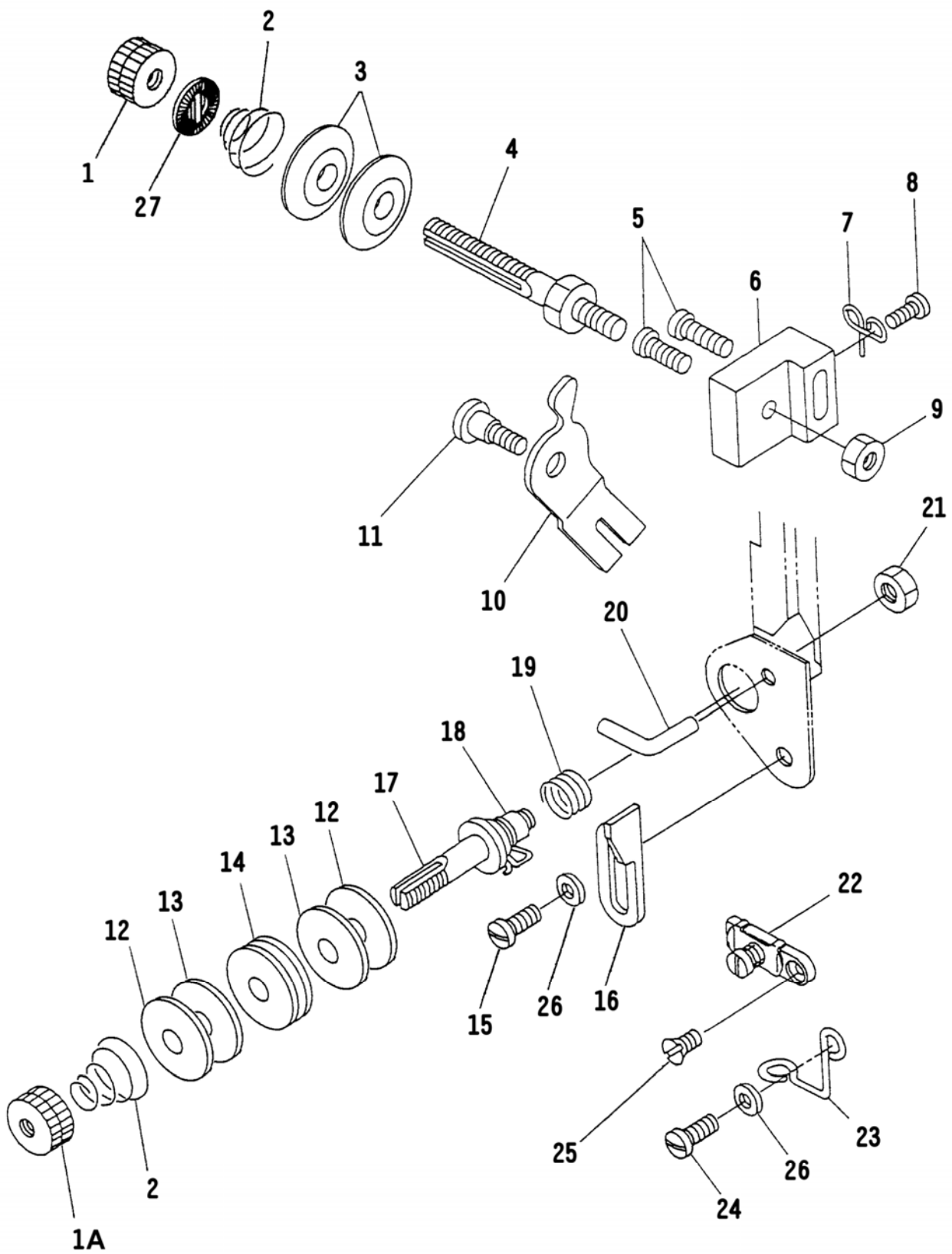
REF. NO.	NOTE	PART NO.	DESCRIPTION	名稱	AMT.
1		210-55504	CONNECTING ROD	連桿	1
2		210-55603	CON-ROD ECCENTRIC CAM	偏心輪	1
3		210-55702	CAM SLIDE PLATE	連桿固定片	1
4		210-57609	CAGE & ROLLER	針狀軸承	1
5		SS-2110920-TP	SCREW 11/64-40 L=8.5	螺絲	2
6		SS-8151550-SP	SCREW 15/64-28 L=15.0	螺絲	1
7A		441-0707A	SADDLE INSTALLING BLOCK, A	固定銷,A	2
7B		441-0707B	SADDLE INSTALLING BLOCK, B	固定銷,B	2
7C		441-0707C	SCREW M5x0.8 L=30.0	螺絲	2
8		210-57203	CON-ROD PIN	連結軸	1
9		SS-8150750-SP	SCREW 15/64-28 L=7.0	螺絲	1
10		211-54109	ROCK SHAFT BUSHING	搖動柄軸套筒	1
11		210-55801	OSCILATING ROCK SHAFT	搖動柄軸	1
12		SS-7621510-SP	SCREW 3/16-32 L=15.0	螺絲	1
13		210-57708	SCREW 11/64-40	螺絲	2
14		210-57005	SLIDE PLATE A	固定板 A	1
15		210-57104	SLIDE PLATE B	固定板 B	1
16		210-57302	CON-ROD PIN WEDGE	銷	1
17		NS-6110420-SP	NUT 11/64-40	螺帽	1
18		TA-0290301-M0	PLUG 2.9 x 3.2 x 3.0	止栓	1
19		CQ-3030000-00	OIL WICK	油線	0.1
20		211-54000	HINGE PIN	搖動柄軸	1
21		SS-6151142-TP	SCREW 15/64-28 L=11.0	螺絲	1
22		211-54307	HOOK DRIVING SHAFT	下軸	1
23		CS-1471012-SH	THRUST COLLAR D=14.73 W=10.0	定環	1
24		SS-8660330-SP	SCREW 1/4-40 L=3.0	螺絲	2
25		SS-8151550-SP	SCREW 15/64-28 L=15.0	螺絲	2
26		211-54505	DRIVING SHAFT BUSHING, REAR	下軸套筒(後)	1
27		B1806-038-000	OIL FELT	羊毛氈	2
28		NS-6680320-SP	NUT 9/32-28	螺帽	1
29		SM-6081802-TP	SCREW M8x1.25 L=18.0	螺絲	1
30		211-54208	HOOK DRIVING SHAFT CRANK	連接柄	1
31		210-56304	SLIDE BROCK STUD	螺絲柱	1
32		210-56205	CRANK SLIDE BLOCK	滑塊	1
33		211-54802	HOOK COVER	梭頭蓋	1
34		211-55007	SCREW 3/16-28 L=2.5	梭頭蓋螺絲	2
35		210-57906	SCREW 3/16-28	螺絲	2
36		210-57500	HOOK COUNTER SPRING	壓縮彈簧	2
37		SD-0260271-SP	HINGE SCREW D=2.6 H=2.7 3/32-56	螺絲	2
38		211-54901	HOOK COVER SPRING	梭頭蓋彈簧	2
39		211-54703	SHUTTLE RACE BODY	梭頭導環座	1
40		210-41850	HOOK ASM.	梭頭	1
41		210-57401	BOBBIN	梭仔	1
42		211-63001	SHUTTLE DRIVER	梭頭驅動柄	1
43		PT-0401800-S0	TAPERED PIN 4.0 x 18.0	推拔銷	1
44	#01	211-55106	SHUTTLE RACE BACK (1)	固定環 (1)	1
45	#01	211-55205	SHUTTLE RACE BACK (2)	固定環 (2)	1
46	#01	211-55304	SHUTTLE RACE BACK (3)	固定環 (3)	1
47		211-55403	SHUTTLE RACE BACK (4) STANDARD	固定環 (4) 標準	1
48	#01	211-55502	SHUTTLE RACE BACK (5)	固定環 (5)	1
49	#01	211-55601	SHUTTLE RACE BACK (6)	固定環 (6)	1
50	#01	211-55700	SHUTTLE RACE BACK (7)	固定環 (7)	1
52		211-54406	BUSHING, FRONT	下軸套筒(前)	1

Note: #01..... Selective Parts

替換品

# 8. TENSION POST COMPONENTS

線調節器機構

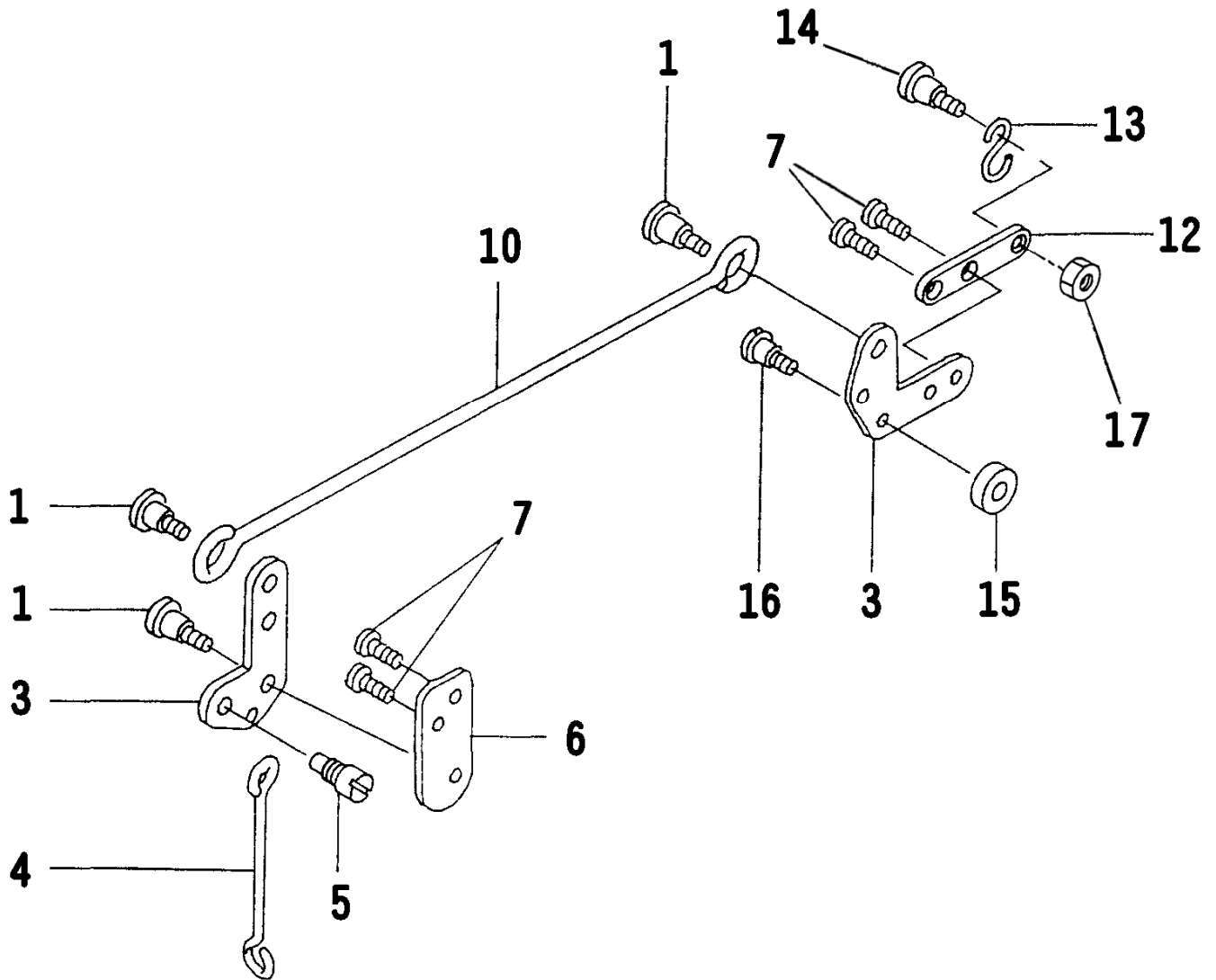




REF. NO.	NOTE	PART NO.	DESCRIPTION	名 稱	AMT.
1		B3125-012-000	THREAD TENSION STUD NUT 1/4-40	螺帽	1
1A		441-0801A	THREAD TENSION STUD NUT 1/4-40	螺帽	1
2		210-59100	THREAD TENSION SPRING	壓縮彈簧	2
3		B3126-012-000	TENSION DISC	壓線盤	2
4		210-59001	THREAD TENSION POST	調整螺絲桿	1
5		SS-7111120-SP	SCREW 11/64-40 L=12.0	螺絲	2
6		210-59209	THREAD TENSION POST BRACKET	彈簧座	1
7		210-59308	THREAD TENSION GUIDE	線掛	1
8		SS-7090710-SP	SCREW 9/64-40 L=7.0	螺絲	1
9		NS-6680320-SP	NUT 9/32-28	螺帽	1
10		210-59407	THREAD RELEASING PLATE	鬆線器	1
11		SD-0600321-SP	HINGE SCREW D=6.0 H=3.2	螺絲	1
12		210-60207	FELT SUPPORT PLATE	棉環側盤	2
13		210-60108	WHEEL FELT	棉環	2
14		210-60009	THREAD TENSION WHEEL	線輪	1
15		SS-7090610-SP	SCREW 9/64-40 L=7.0	螺絲	1
16		210-59803	SPRING SUPPORT PLATE	線軸彈簧調整器	1
17		210-59902	THREAD TENSION WHEEL POST	調整螺絲桿	1
18		210-59605	SPRING	吊線彈簧	1
19		210-59704	THREAD TAKE-UP SPRING GUIDE	吊線彈簧	1
20		210-59506	SLACK THREAD GUIDE	線掛	1
21		NS-6150310-SP	NUT 15/64-28	螺帽	1
22		D1129-141-EA0	ARM THREAD GUIDE BOTTOM ASM.	線掛組	1
23		B1131-562-000	FRAME THREAD GUIDE, LOWER	線掛(下)	1
24		SS-7090710-SP	SCREW 9/64-40 L=7.0	螺絲	1
25		SS-1090410-SL	SCREW 9/64-40 L=4.0	螺絲	1
26		WZ-0430390-SP	WASHER 3.8x8x0.8	墊圈	2
27		B3120-125-000	ROTATING STOPPER	壓花片	1

## 9. KNEE LIFTER COMPONENTS

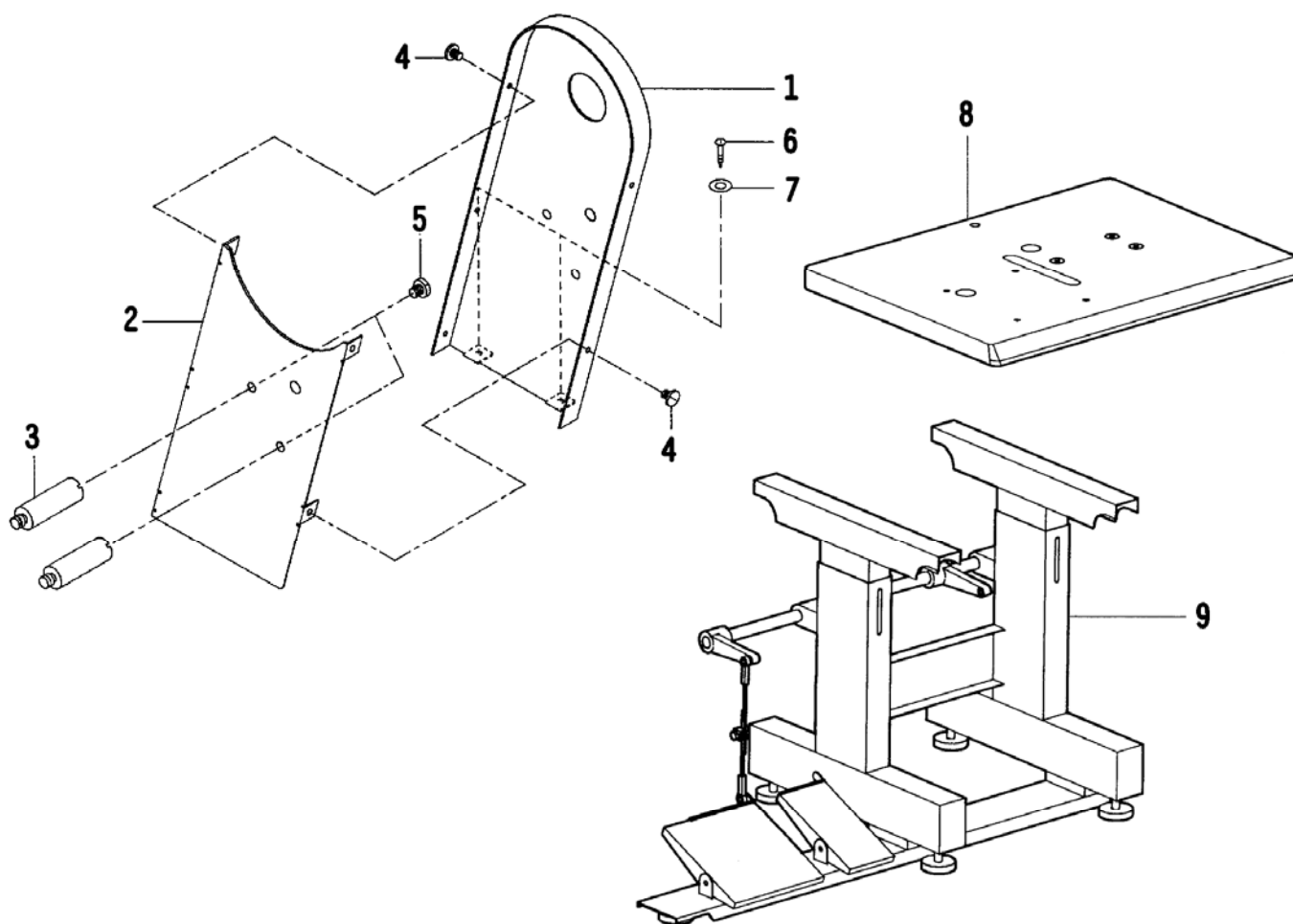
提昇桿機構



REF. NO.	NOTE	PART NO.	DESCRIPTION	名稱	AMT.
1		SD-0790431-SP	HINGE SCREW D=7.94 H=4.3	螺絲	3
3		210-62807	PRESSER BAR LIFTING LINK	押棒提升臂	2
4		210-62500	PRESSER BAR LIFTING BAR	押棒提升桿	1
5		210-62609	SCREW	螺絲	1
6		210-62708	LINK BASE	連接座	1
7		SS-7150740-SP	SCREW 15/64-28 L=7.0	螺絲	4
10		211-56005	SIDE CONNECTING BAR	押棒提升桿	1
12		211-56104	LINK PLATE	連接板	1
13		211-57607	S-PLUG	鏈條掛環	1
14		SD-0800341-SP	HINGE SCREW D=8.0 H=3.4	螺絲	1
15		181-25609	LINK COLLAR 6x12.5x3	定環	1
16		SD-0790432-SP	HINGE SCREW D=7.94 H=4.3	螺絲	1
17		NS-6150310-SP	NUT 1/4-40	螺帽	1

10. BELT COVER, TABLE & STAND COMPONENTS (OPTIONAL PARTS)

皮帶蓋,車板,車腳機構 (選購品)



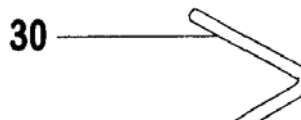
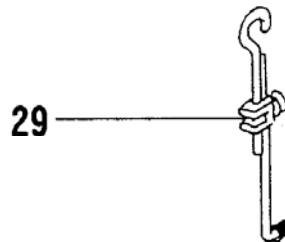
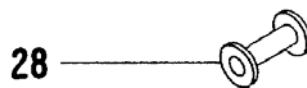
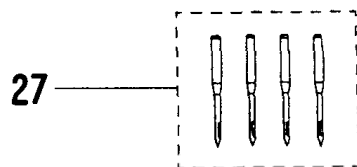
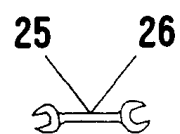
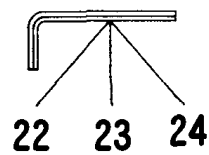
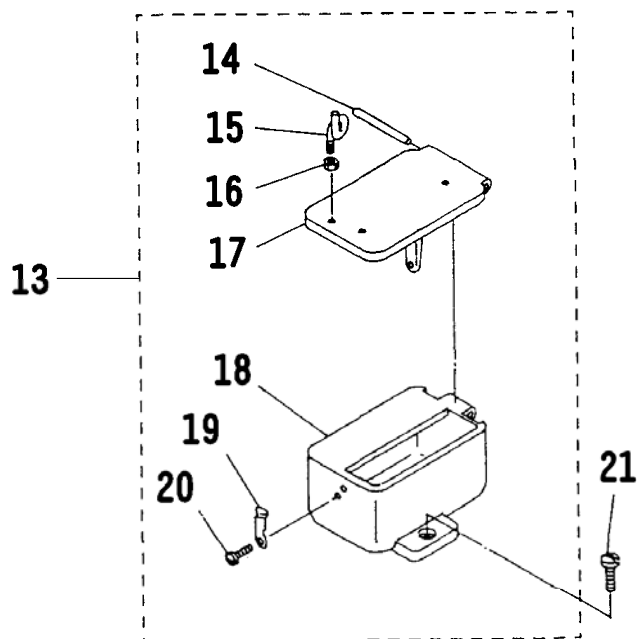
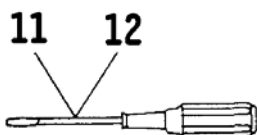
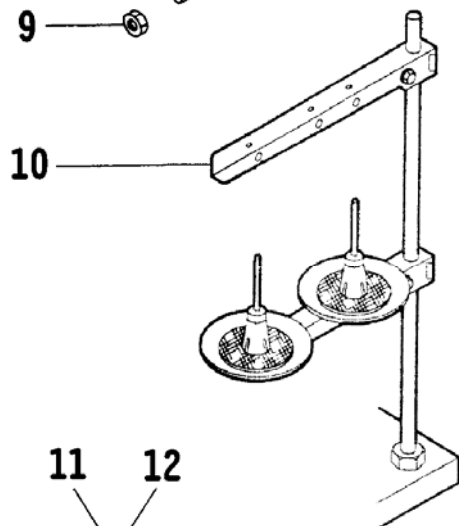
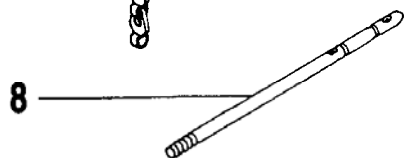
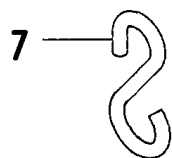
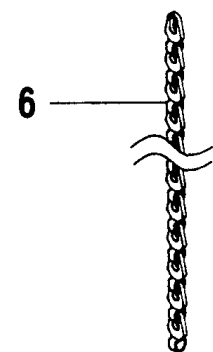
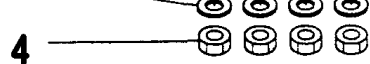
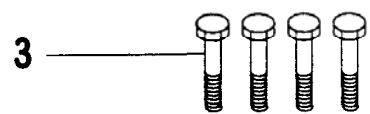
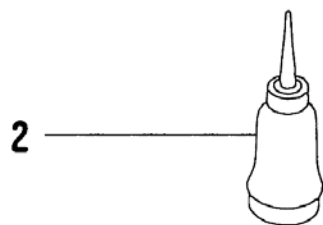
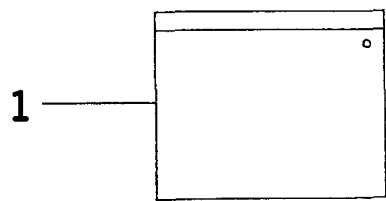
REF. NO.	NOTE	PART NO.	DESCRIPTION	名稱	AMT.
1	#01	211-57052	BELT COVER, A	皮帶蓋 A	1
2	#01	211-57201	BELT COVER, B	皮帶蓋 B	1
3	#01	211-57300	BELT COVER STUD	皮帶蓋螺絲柱	2
4	#01	SS-6110480-SP	SCREW 11/64-40 L=4.0	螺絲	5
5	#01	SS-7150740-SP	SCREW 15/64-28 L=7.0	螺絲	2
6	#01	SK-3482000-SC	WOOD SCREW D=4.8 L=20.0	木螺絲	2
7	#01	WP-0501016-SC	WASHER 5.0 x 10.5 x 1.0	墊圈	2
8	#01	211-17502	TABLE	車板	1
9	#01	211-58001	STAND	車腳	1

Note: #01..... Optional Part

選購品

11. ACCESSORIES PARTS COMPONENTS

附屬品機構



REF. NO.	NOTE	PART NO.	DESCRIPTION	名 稱	AMT.
1		B9101-552-000	ACCESSORY BOX	工具盒	1
2		B9121-141-HA0	OILER ASM.	油壺	1
3		SM-9106503-SC	SCREW M10x1.5 L=65.0	螺絲	4
4		NM-6100011-SF	NUT M10x1.5	螺帽	4
5		WP-1102016-SC	WASHER 11 x 21 x 2	墊圈	8
6		211-57508	CHAIN	鏈條	1
7		211-57607	S-PLUG	鏈條掛環	1
8		B1114-517-000	NEEDLE THREAD GUIDE PIN	線柱	1
9		NS-6620310-SP	NUT 3/16-32	螺帽	1
10		229-30358	THREAD STAND ASM.	線架	1
11		B9109-555-000	SCREW DRIVER, LARGE	螺絲起子(大)	1
12		B9106-804-000	SCREW DRIVER, SMALL	螺絲起子(小)	1
13		210-64753	OIL POT ASM.	油壺組	1
14		210-65206	PIN	銷	(1)
15		B3114-761-000	FRAME THREAD GUIDE B	線掛	(1)
16		NS-6060350-SP	NUT 3/32-56	螺帽	(1)
17		210-64704	OIL POT COVER	油壺蓋	(1)
18		210-64803	OIL POT	油壺	(1)
19		210-64902	COVER STOPPER	彈簧板	(1)
20		SS-7090710-SP	SCREW 9/64-40 L=6.8	螺絲	(1)
21		SS-7151210-SP	SCREW 15/64-28 L=12.0	螺絲	1
22		J1066-000-00G	HEXAGONAL WRENCH KEY	六角板手	1
23		J1066-000-00F	HEXAGONAL WRENCH KEY	六角板手	1
24		J1066-000-00D	HEXAGONAL WRENCH KEY	六角板手	1
25		B9112-012-000	WRENCH (11 x 14)	開口板手(11 x 14)	1
26		B9113-012-000	WRENCH (9 x 10)	開口板手(9 x 10)	1
27		MC-5320023-04	NEEDLE (794 NM=230-4)	針	3
28		210-57401	BOBBIN	梭仔	3
29	#02	B7114-012-0A0	MOTOR CONNECTING ROD ASM.	馬達鉤	1
30	#01	210-64605	SUPPORTING ARM	支撐桿	1
31	#01	NS-6150430-SP	NUT 15/64-28	螺帽	1

Note: #01..... Optional Part

Note: #02..... H & M only

選購品

購買馬達隨附

12. NUMERICAL INDEX OF PARTS

零件索引

Part No.	Page	Ref. No.	Part No.	Page	Ref. No.	Part No.	Page	Ref. No.
105-19502	2	28	210-51602	5	23	210-64704	11	17
181-25609	9	15	210-51701	5	6	210-64753	11	13
			210-51800	5	5	210-64803	11	18
210-26901	6	18	210-54408	6	6	210-64902	11	19
210-40555	2	22	210-54507	6	1	210-65206	11	14
210-41850	7	40	210-54606	6	4	210-90253	1	1
210-44508	2	15	210-54705	6	5	210-91707	2	1
210-44607	2	10	210-54804	6	3	210-91806	2	26
210-44706	2	16	210-54903	6	2	210-92101	4	13
210-44805	2	21	210-55504	7	1	210-92200	4	25
210-44904	2	7	210-55603	7	2	210-92309	4	18
210-45109	2	4	210-55702	7	3	210-92507	3	26
210-45406	2	11	210-55801	7	11	210-92606	3	25
210-45505	2	20	210-56205	7	32	210-92705	3	29
210-45604	2	2	210-56304	7	31	210-92804	3	23
210-45703	2	13	210-57005	7	14	210-93000	3	20
210-46107	2	29	210-57104	7	15	210-93208	4	26
210-46206	2	30	210-57203	7	8	210-93307	4	29
210-46305	2	27	210-57302	7	16	210-93406	4	12
210-48707	3	2	210-57401	7	41	210-93505	4	14
210-48707	4	2	210-57401	11	28	210-93604	4	30
210-48707A	3	19A	210-57500	7	36	210-93901	4	3
210-48707B	3	19B	210-57609	7	4	210-94008	4	4
210-49200	3	15	210-57708	7	13	210-94107	4	6
210-49309	3	13	210-57906	7	35	210-94701	4	5
210-49408	3	1	210-59001	8	4	210-94800	4	9
210-49507	3	11	210-59100	8	2	210-94909	4	10
210-49606	3	6	210-59209	8	6	210-95005	5	8
210-49705	3	7	210-59308	8	7	210-95104	5	14
210-49804	3	8	210-59407	8	10	210-95153	5	13
210-49903	3	17	210-59506	8	20	210-97506	5	15
210-50000	3	14	210-59605	8	18			
210-50109	3	12	210-59704	8	19	211-17502	10	8
210-50505	5	4	210-59803	8	16	211-33004	1	11
210-50604	5	9	210-59902	8	17	211-51006	1	3
210-50703	5	1	210-60009	8	14	211-51402	2	18
210-50802	5	3	210-60108	8	13	211-51907	6	17
210-51008	5	20	210-60207	8	12	211-52004	6	21
210-51107	5	21	210-62500	9	4	211-52103	6	23
210-51206	5	25	210-62609	9	5	211-52251	6	29
210-51305	5	2	210-62708	9	6	211-52400	6	35
210-51404	5	26	210-62807	9	3	211-52509	6	40
210-51503	5	16	210-64605	11	30	211-52707	6	34

## 12. NUMERICAL INDEX OF PARTS

## 零件索引

Part No.	Page	Ref. No.	Part No.	Page	Ref. No.	Part No.	Page	Ref. No.
211-52806	6	9	400-0918	9	18	D1129-141-EA0	8	22
211-52905	6	8						
211-53606	6	24	441-0112	1	12	J1066-000-00D	11	24
211-53705	6	20	441-0419	4	19	J1066-000-00F	11	23
211-53804	6	28	441-0420	4	20	J1066-000-00G	11	22
211-53903	6	10	441-0431	4	31			
211-54000	7	20	441-0707A	7	7A	MC-5320023-00	4	22
211-54109	7	10	441-0707B	7	7B	MC-5320023-04	11	27
211-54208	7	30	441-0707C	7	7C			
211-54307	7	22	441-0801A	8	1A	NM-6080001-SE	6	1A
211-54406	7	52				NM-6100011-SF	11	4
211-54505	7	26	B1114-517-000	11	8			
211-54703	7	39	B1131-562-000	8	23	NS-6060350-SP	11	16
211-54802	7	33	B1156-026-000	1	8	NS-6090310-SP	5	12
211-54901	7	38	B1424-158-000	3	36	NS-6110420-SP	7	17
211-55007	7	34	B1424-158-000	6	42	NS-6150310-SP	8	21
211-55106	7	44	B1617-241-H00	6	32	NS-6150310-SP	9	17
211-55205	7	45	B1618-241-H00	6	30	NS-6150430-SP	11	31
211-55304	7	46	B1619-241-H00	6	31	NS-6160520-SP	6	22
211-55403	7	47	B1662-562-000	5	22	NS-6620310-SP	11	9
211-55502	7	48	B1806-038-000	7	27	NS-6680320-SP	7	28
211-55601	7	49				NS-6680320-SP	8	9
211-55700	7	50	B3114-761-000	11	15	NS-6680410-SP	2	5
211-56005	9	10	B3120-125-000	8	27	NS-6680410-SP	2	24
211-56104	9	12	B3125-012-000	8	1	NS-6680410-SP	6	33
211-57052	10	1	B3126-012-000	8	3	NS-6720440-SP	3	9
211-57201	10	2						
211-57300	10	3	B7114-012-0A0	11	29	PS-0300201-KP	5	19
211-57508	11	6						
211-57607	9	13	B9101-552-000	11	1	PT-0401800-S0	7	43
211-57607	11	7	B9106-804-000	11	12	PT-0405600-SH	2	6
211-58001	10	9	B9109-555-000	11	11			
211-60106	1	10	B9112-012-000	11	25	RE-0400000-K0	2	31
211-60205	1	5	B9113-012-000	11	26	RE-0800000-K0	3	3
211-61609	3	32	B9121-141-HA0	11	2	RE-0800000-K0	3	18
211-61708	3	34				RE-0800000-K0	3	37
211-61807	3	35	CQ-2020000-00	4	11	RE-0800000-K0	4	1
211-62003	6	38	CQ-3030000-00	7	19	RE-0800000-K0	6	16
211-62300	6	13				RE-0800000-K0	6	43
211-63001	7	42	CS-1111019-SH	6	26			
			CS-1471012-SH	6	37	SD-0260271-SP	7	37
229-30358	11	10	CS-1471012-SH	7	23	SD-0600321-SP	8	11
			CS-1801211-SH	3	28	SD-0790431-SP	9	1

12. NUMERICAL INDEX OF PARTS

零件索引

Part No.	Page	Ref. No.	Part No.	Page	Ref. No.	Part No.	Page	Ref. No.
SD-0790432-SP	9	16	SS-7111110-TP	1	4	TA-1250406-R0	1	7
SD-0790801-SP	6	15	SS-7111120-SP	4	24			
SD-0800341-SP	9	14	SS-7111120-SP	8	5	WP-0501016-SC	10	7
SD-1070901-TP	2	25	SS-7120910-SP	1	6	WP-1102016-SC	11	5
			SS-7150740-SP	9	7			
SK-3482000-SC	10	6	SS-7150740-SP	10	5	WZ-0430390-SP	8	26
			SS-7150940-SP	6	7			
SM-6061552-TP	3	4	SS-7151120-SP	4	23			
SM-6061552-TP	4	27	SS-7151210-SP	11	21			
SM-6061802-TP	6	39	SS-7151550-SP	3	21			
SM-6081802-TP	7	29						
SM-8061012-TP	4	15	SS-7621040-SP	5	17			
SM-8061212-TP	4	16	SS-7621510-SP	7	12			
SM-8061212-TP	4	28						
SM-9106503-SC	11	3	SS-8150410-SP	5	10			
			SS-8150710-SP	2	17			
SS-1090410-SL	8	25	SS-8150710-SP	3	5			
SS-1681140-SP	2	3	SS-8150710-SP	3	24			
			SS-8150710-SP	3	30			
SS-2110915-SP	2	19	SS-8150750-SP	6	41			
SS-2110920-TP	7	5	SS-8150750-SP	7	9			
			SS-8151150-SP	6	25			
SS-6110480-SP	10	4	SS-8151150-SP	6	36			
SS-6110610-TP	6	19	SS-8151550-SP	2	12			
SS-6110710-TP	4	21	SS-8151550-SP	7	6			
SS-6121210-SP	5	7	SS-8151550-SP	7	25			
SS-6121610-SP	6	12						
SS-6151142-TP	7	21	SS-8660330-SP	6	27			
SS-6151920-SP	1	2	SS-8660330-SP	7	24			
			SS-8660510-TP	3	27			
SS-6621840-SP	6	11	SS-8660512-TP	3	22			
SS-6660622-TP	5	18	SS-8660522-TP	4	17			
			SS-8660522-TP	5	24			
SS-7090610-SP	8	15	SS-8660610-TP	2	14			
SS-7090710-SP	1	9	SS-8660610-TP	3	16			
SS-7090710-SP	8	8	SS-8660612-TP	2	8			
SS-7090710-SP	8	24						
SS-7090710-SP	11	20	SS-9201813-CP	3	10			
SS-7091410-SP	5	11	SS-9201813-CP	3	33			
			SS-9202443-CP	3	31			
SS-7110540-SP	4	8	SS-9702110-SP	2	23			
SS-7110840-SP	4	7						
SS-7110840-SP	6	14	TA-0290301-M0	7	18			