

MODEL: CK-243

SINGLE NEEDLE, UNISON-FEED, LOCKSTITCH SEWING

MACHINE FOR EXTRA HEAVY-WEIGHT MATERIALS

單針極厚綜合送料縫紉機

PARTS LIST

零件冊



Chikon Industrial Sewing Machine Co., Ltd.

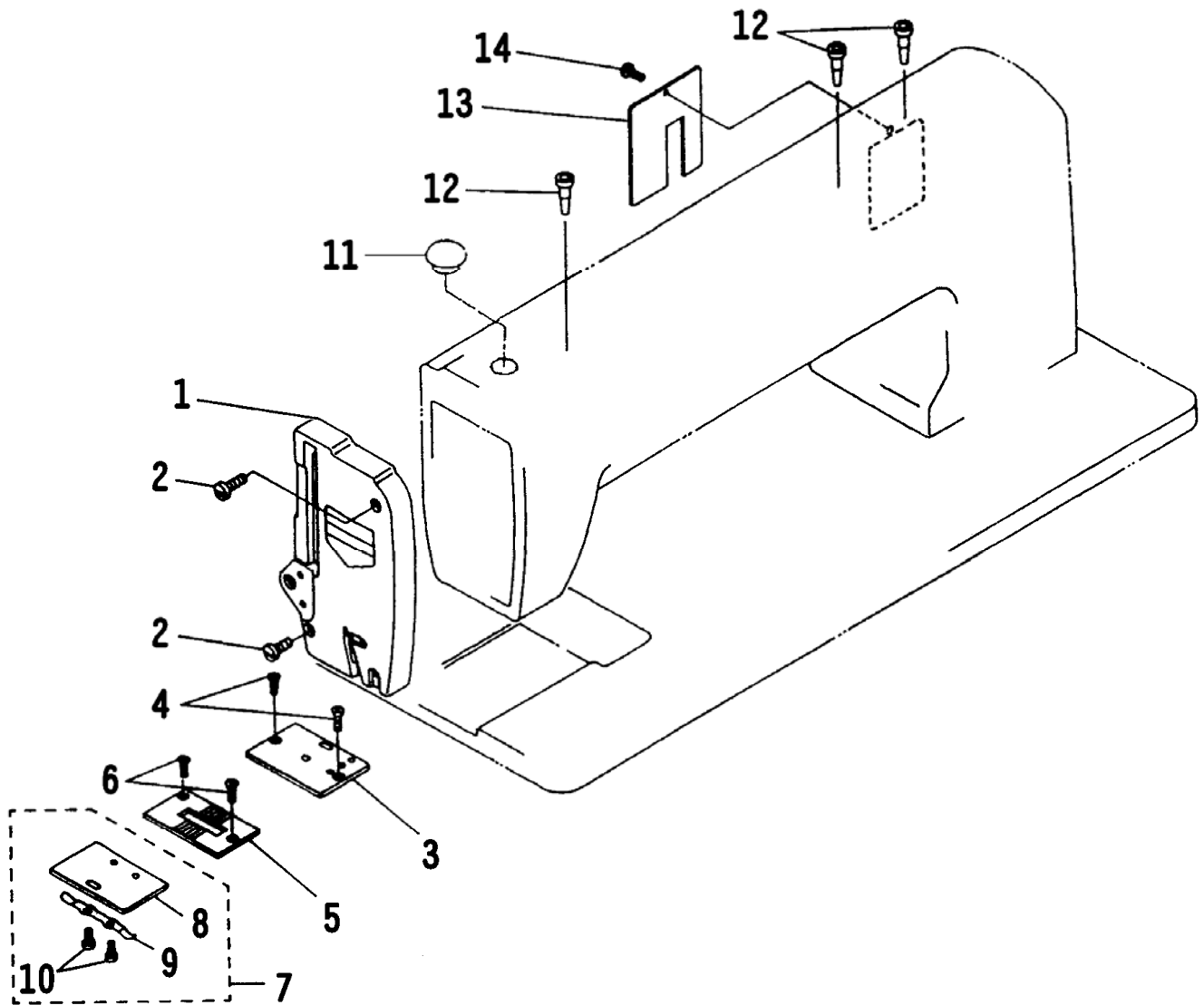
2011-07

CONTENS

1. FRAME & MISCELLANEOUS COVER COMPONENTS	1
頭部, 外裝機構	
2. MAIN SHAFT COMPONENTS	2
上軸機構	
3. NEEDLE BAR & UPPER FEED MECHANISM COMPONENTS (1/2)	4
針棒, 上送齒機構 (1/2)	
4. NEEDLE BAR & UPPER FEED MECHANISM COMPONENTS (2/2)	6
針棒, 上送齒機構 (2/2)	
5. PRESSURE BAR COMPONENTS	8
押棒機構	
6. FEED MECHANISM COMPONENTS	10
送齒機構	
7. FEED REGULATOR MECHANISM COMPONENTS	12
送齒機構	
8. HOOK DRIVING SHAFT COMPONENTS	14
下軸機構	
9. TENSION POST COMPONENTS	16
線調整器機構	
10. THREAD WINDER & THREAD GUIDE COMPONENTS.....	18
捲線器, 穿線機構	
11. KNEE LIFTER COMPONENTS	20
提升桿機構	
12. BELT COVER COMPONENTS	22
皮帶蓋機構	
13. THREAD STAND COMPONENTS	23
線架機構	
14. TABLE & STAND COMPONENTS	24
車板, 車腳機構	
15. ACCESSORIES PARTS COMPONENTS	25
附屬品機構	
16. NUMERICAL INDEX OF PARTS	27
零件索引	
17. INSTRUCTION MANUAL	30
操作手冊	

1. FRAME & MISCELLANEOUS COVER COMPONENTS

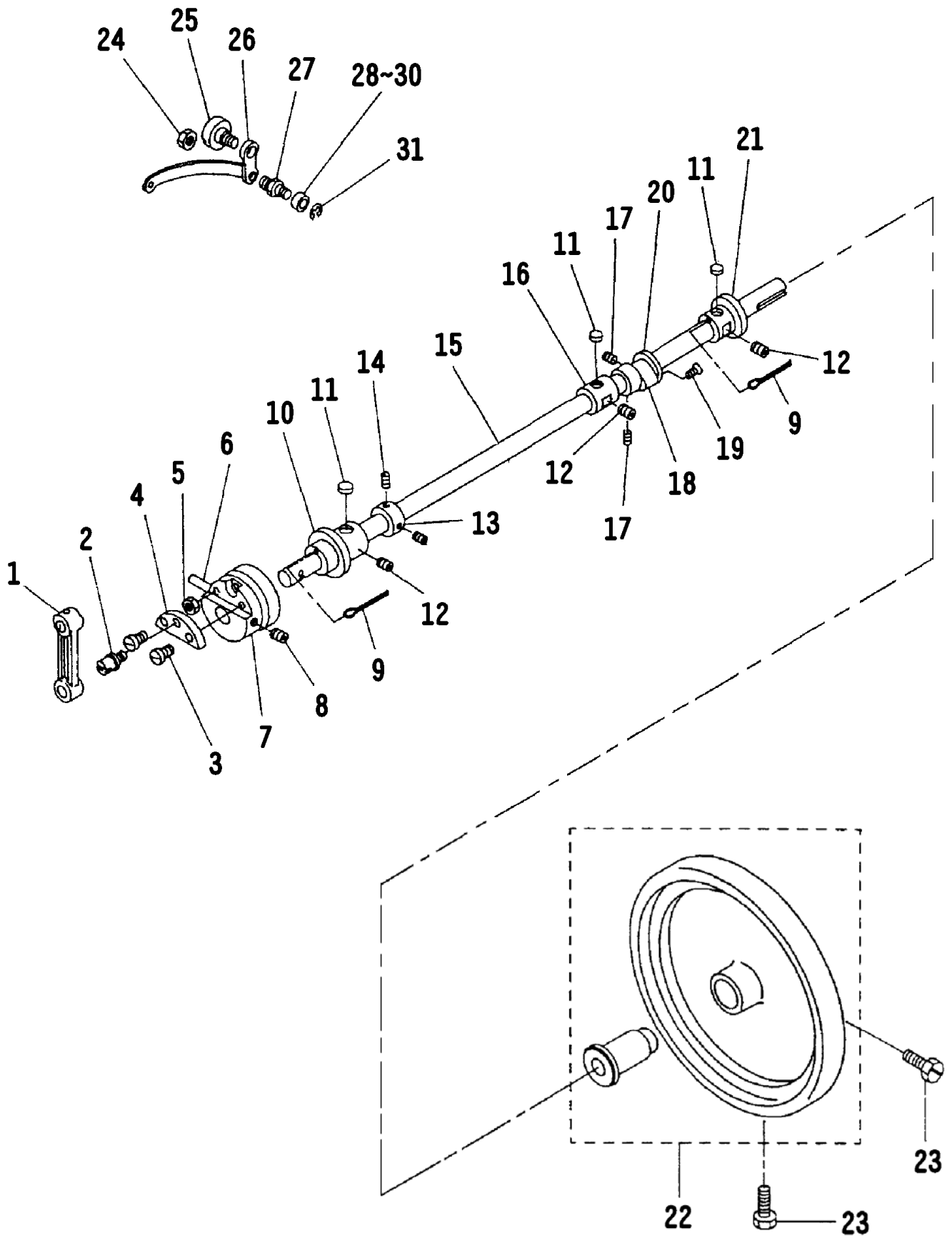
頭部, 外裝機構



REF. NO.	NOTE	PART NO.	DESCRIPTION	名稱	AMT.
1		210-90253	FACE PLATE ASM.	面板	1
2		SS-6151920-SP	SCREW 15/64-28 L=19.0	螺絲	2
3		210-44300	SLIDE PLATE B	內角板	1
4		SS-2110915-SP	SCREW 11/64-40 L=9.0	螺絲	2
5		210-90709	THROAT PLATE	針板	1
6		SS-2110915-SP	SCREW 11/64-40 L=9.0	螺絲	2
7		210-44151	SLIDE PLATE A ASM.	外角板組	1
8		210-44102	SLIDE PLATE A	外角板	(1)
9		210-44201	SPRING	彈簧	(1)
10		SS-7060310-SP	SCREW 3/32-56 L=2.5	螺絲	(2)
11		TA-1250406-R0	RUBER PLUG	油塞	1
12		B1156-026-000	OIL PIPE	油管	3
13		211-90600	SIDE COVER	側面板	1
14		SS-7090710-SP	SCREW 9/64-40 L=7.0	螺絲	1

2. MAIN SHAFT COMPONENTS

上軸機構



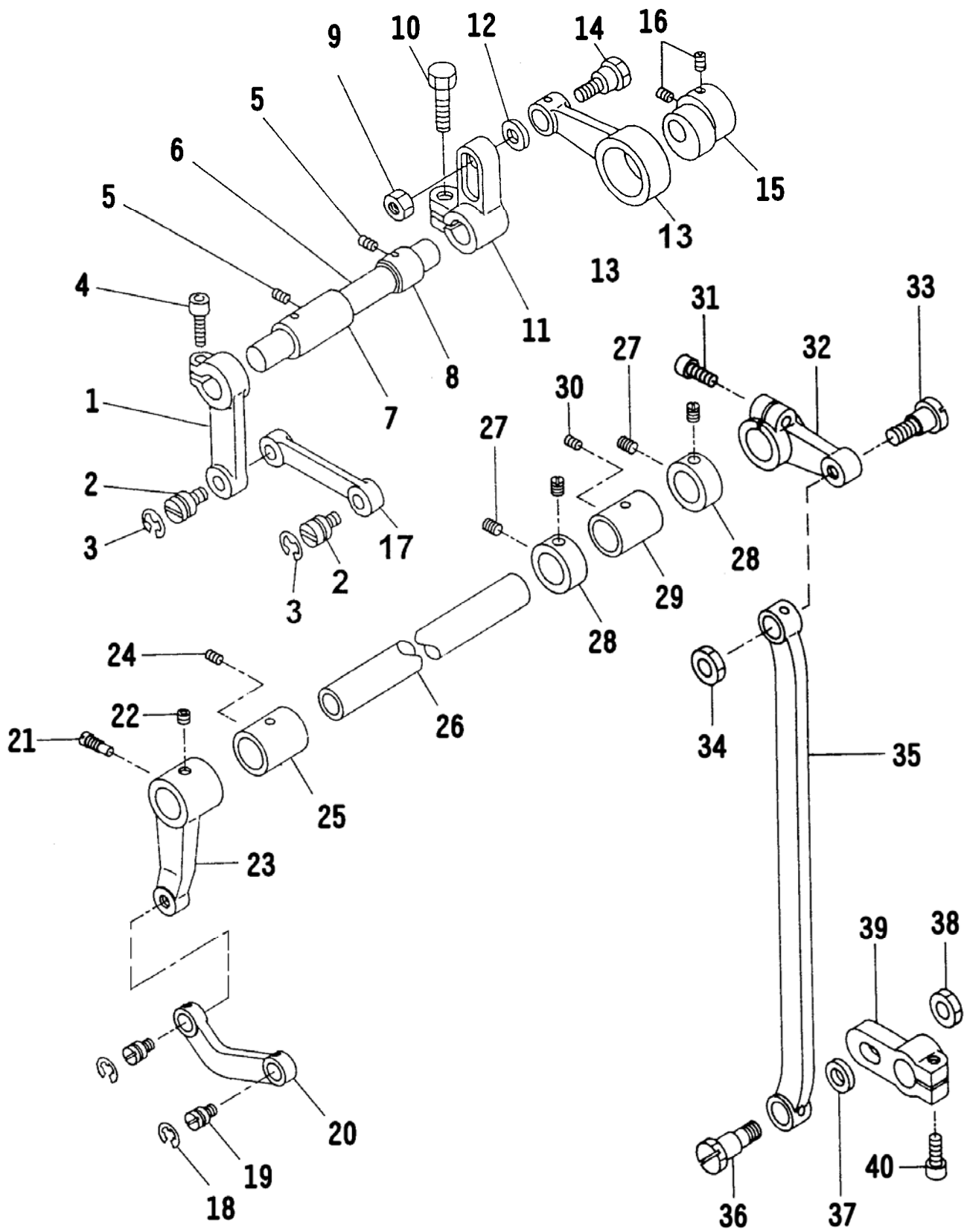
REF. NO.	NOTE	PART NO.	DESCRIPTION	名 稱	AMT.
1		210-91707	CRANK ROD	針棒連接器	1
2		210-45604	NEEDLE BAR CRANK SHAFT	連接軸	1
3		SS-1681140-SP	SCREW 9/32-28 L=11.0	螺絲	2
4		210-45109	CRANK PLATE	天平凸輪連接座	1
5		NS-6680410-SP	NUT 9/32-28	螺帽	1
6		PT-0405600-SH	TAPER PIN	錐度銷	1
7		210-44904	CAM	天平凸輪	1
8		SS-8660612-TP	SCREW 1/4-40 L=6.0	螺絲	2
9		CQ-2020000-00	OIL WICK	油線	0.2
10		210-44607	MAIN SHAFT BUSHING, FRONT	上軸套筒(前)	1
11		210-45406	FELT	油棉	3
12		SS-8151550-SP	SCREW 15/64-28 L=15.0	螺絲	3
13		210-45703	THRUST COLLAR	上軸定環	1
14		SS-8660610-TP	SCREW 1/4-40 L=6.0	螺絲	2
15		210-44508	MAIN SHAFT	上軸	1
16		210-44706	MAIN SHAFT BUSHING, CENTER	上軸套筒(中)	1
17		SS-8150710-SP	SCREW 15/64-28 L=7.0	螺絲	2
18		210-45208	FEED ECCENTRIC CAM	偏心輪	1
19		SS-2110915-SP	SCREW 11/64-40 L=9.0	螺絲	2
20		210-45505	SIDE PLATE	側板	1
21		210-44805	MAIN SHAFT BUSHING, REAR	上軸套筒(後)	1
22		210-40555	HAND WHEEL ASM.	皮帶輪組	1
23		SS-9702110-SP	SCREW 5/16-24 L=21.0	螺絲	2
24		NS-6680410-SP	NUT 9/32-28	螺帽	1
25		SD-1070901-TP	HINGE SCREW	螺絲	1
26		210-91806	THREAD TAKE-UP LEVER	天平	1
27		210-46305	ROLLER STUD	滾輪固定軸	1
28		105-19502	ROLLER	滾輪	1
29	#01	210-46107	ROLLER	滾輪	1
30	#01	210-46206	ROLLER	滾輪	1
31		RE-0400000-K0	E-RING (4MM)	E 型扣環	1

Note: #01..... Selective Parts

替換品

3. NEEDLE BAR & UPPER FEED MECHANISM COMPONENTS (1/2)

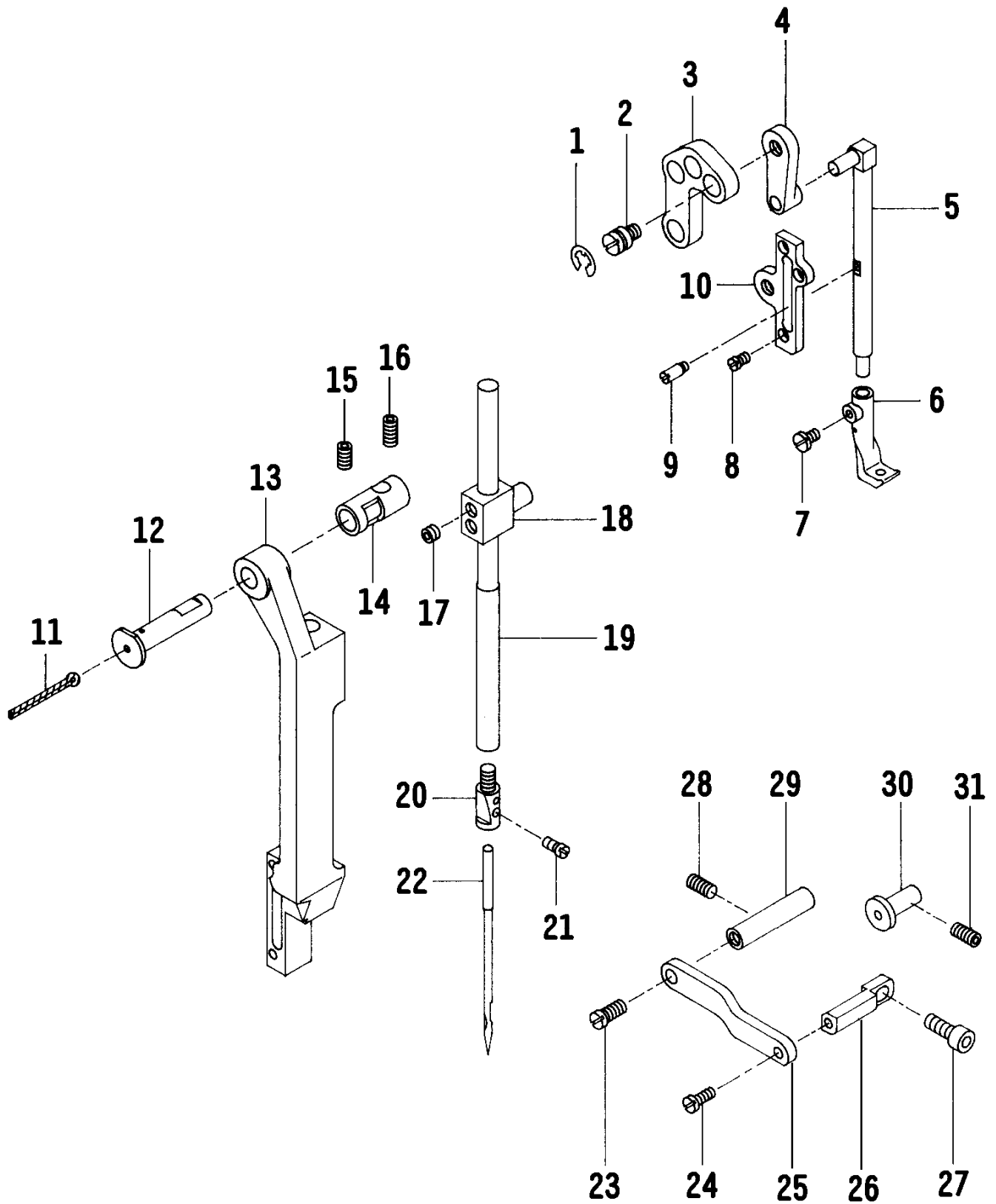
針棒, 上送齒機構 (1/2)



REF. NO.	NOTE	PART NO.	DESCRIPTION	名 稱	AMT.
1		210-49408	DRIVING SHAFT ARM. FRONT	上送軸柄	1
2		210-48707	HINGE SCREW	螺絲	2
3		RE-0800000-K0	E-RING (8MM)	E 型扣環	2
4		SM-6061552-TP	SCREW M6x1 L=15.0	螺絲	1
5		SS-8150710-SP	SCREW 15/64-28 L=7.0	螺絲	2
6		210-49606	FED ROCKER SHAFT	上送軸	1
7		210-49705	BUSHING, FRONT	上送軸套筒(前)	1
8		210-49804	BUSHING, REAR	上送軸套筒(後)	1
9		NS-6720440-SP	NUT 11/32-28	螺帽	1
10		SS-9201813-CP	SCREW 5/16-18 L=18.0	螺絲	1
11		210-49507	DRIVING SHAFT ARM. REAR	上送軸曲柄	1
12		210-50109	WASHER	平墊圈	1
13		210-49309	CONNECTING ROD	連桿	1
14		210-50000	HINGE SCREW	螺絲	1
15		210-49200	CAM	偏心輪	1
16		SS-8660610-TP	SCREW 1/4-40 L=6.0	螺絲	2
17		210-49903	ROD	搖軸連桿	1
18		RE-0800000-K0	E-RING (8MM)	E 型扣環	2
19		210-48707	HINGE SCREW	螺絲	2
20		210-93000	FRAME DRIVING LINK	針棒座連接桿	1
21		SS-7151550-SP	SCREW 15/64-28 L=14.5	螺絲	1
22		SS-8660512-TP	SCREW 1/4-40 L=5.0	螺絲	1
23		210-92804	DRIVING SHAFT FRONT ARM	中軸連桿(前)	1
24		SS-8150710-SP	SCREW 15/64-28 L=7.0	螺絲	1
25		210-92606	DRIVING SHAFT FRONT METAL	中軸套筒(前)	1
26		210-92507	DRIVING SHAFT	中軸	1
27		SS-8660510-TP	SCREW 1/4-40 L=4.5	螺絲	4
28		CS-1801211-SH	THRUSH COLLAR D=18 W=12	定環	2
29		210-92705	BUSHING, REAR	中軸套筒(後)	1
30		SS-8150710-SP	SCREW 15/64-28 L=7.0	螺絲	1
31		SM-6061552-TP	SCREW M6x1 L=15.0	螺絲	1
32		210-92903	DRIVING SHAFT REAR ARM	中軸連桿(後)	1
33		SD-1201201-TP	HINGE SCREW	螺絲	1
34		NS-6680410-SP	NUT 9/32-28	螺帽	1
35		210-93109	NEEDLE BAR FRAME DRIVING ROD	連桿	1
36		210-50000	HINGE SCREW (LOWER)	螺絲	1
37		210-50109	HINGE SCREW (LOWER) WASHER	平墊圈	1
38		NS-6720440-SP	NUT 11/32-28	螺帽	1
39		210-93704	NEEDLE BAR FRAME DRIVING ARM	中軸連桿	1
40		SM-6061552-TP	SCREW M6x1 L=15.0	螺絲	1

4. NEEDLE BAR & UPPER FEED MECHANISM COMPONENTS (2/2)

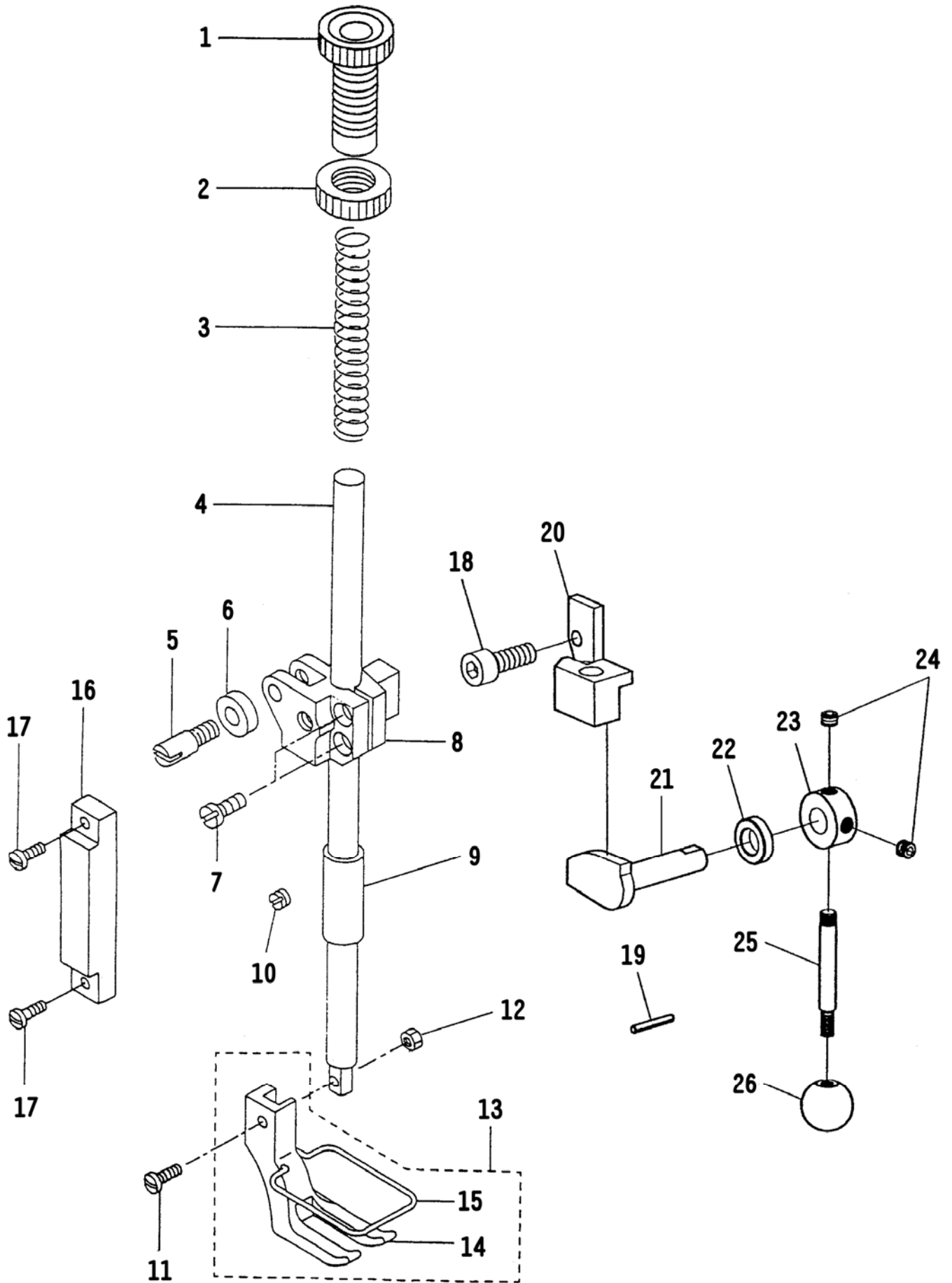
針棒, 上送齒機構 (2/2)



REF. NO.	NOTE	PART NO.	DESCRIPTION	名 稱	AMT.
1		RE-0800000-K0	E-RING (8MM)	E 型扣環	2
2		210-48707	HINGE SCREW	螺絲	2
3		210-93901	L-LINK	L 型連桿	1
4		210-94008	UPPER FEED FRAME DRIVING LINK	連桿	1
5		210-94701	UPPER FEED BAR	內押棒	1
6		210-84107	WALKING FOOT	內押腳	1
7		SS-7110840-SP	SCREW 11/64-40 L=7.8	螺絲	1
8		SS-7110540-SP	SCREW 11/64-40 L=5.0	螺絲	3
9		210-94800	UPPER FEED BAR PIN	押腳棒固定螺絲	1
10		210-94909	UPPER FEED BAR GUIDE	押腳棒固定板	1
11		CQ-2020000-00	OIL WICK	油線	0.2
12		210-93406	FRAME DRIVING BASE SHAFT	針棒固定軸	1
13		210-92101	FRAME DRIVING BASE	針棒座	1
14		210-93505	FRAME DRIVING BASE SHAFT METAL	固定軸套筒	1
15		SM-8061012-TP	SCREW M6x1 L=10.0	螺絲	1
16		SM-8061212-TP	SCREW M6x1 L=12.0	螺絲	1
17		SS-8660522-TP	SCREW 1/4-40 L=4.5	螺絲	2
18		210-92309	NEEDLE BAR CONNECTION	針棒鉗	1
19		210-92002	NEEDLE BAR	針棒	1
20		210-92408	NEEDLE STOPPER	針榴	1
21		SS-6110710-TP	SCREW 11/64-40 L=6.5	螺絲	1
22		MC-5320023-00	NEEDLE (749 NM=230)	針	1
23		SS-7151120-SP	SCREW 15/64-28 L=11.0	螺絲	1
24		SS-7111120-SP	SCREW 11/64-40 L=10.5	螺絲	1
25		210-92200	PRESSURE PLATE	固定板	1
26		210-93208	PRESSURE PLATE	固定板	1
27		SM-6061552-TP	SCREW M6x1 L=15.0	螺絲	1
28		SM-8061212-TP	SCREW M6x1 L=12.0	螺絲	1
29		210-93307	PRESSURE SHAFT	調節軸	1
30		210-93604	FRAME DRIVING BASE GUIDE	針棒調節器	1
31		SM-8061212-TP	SCREW M6x1 L=12.0	螺絲	1

5. PRESSURE BAR COMPONENTS

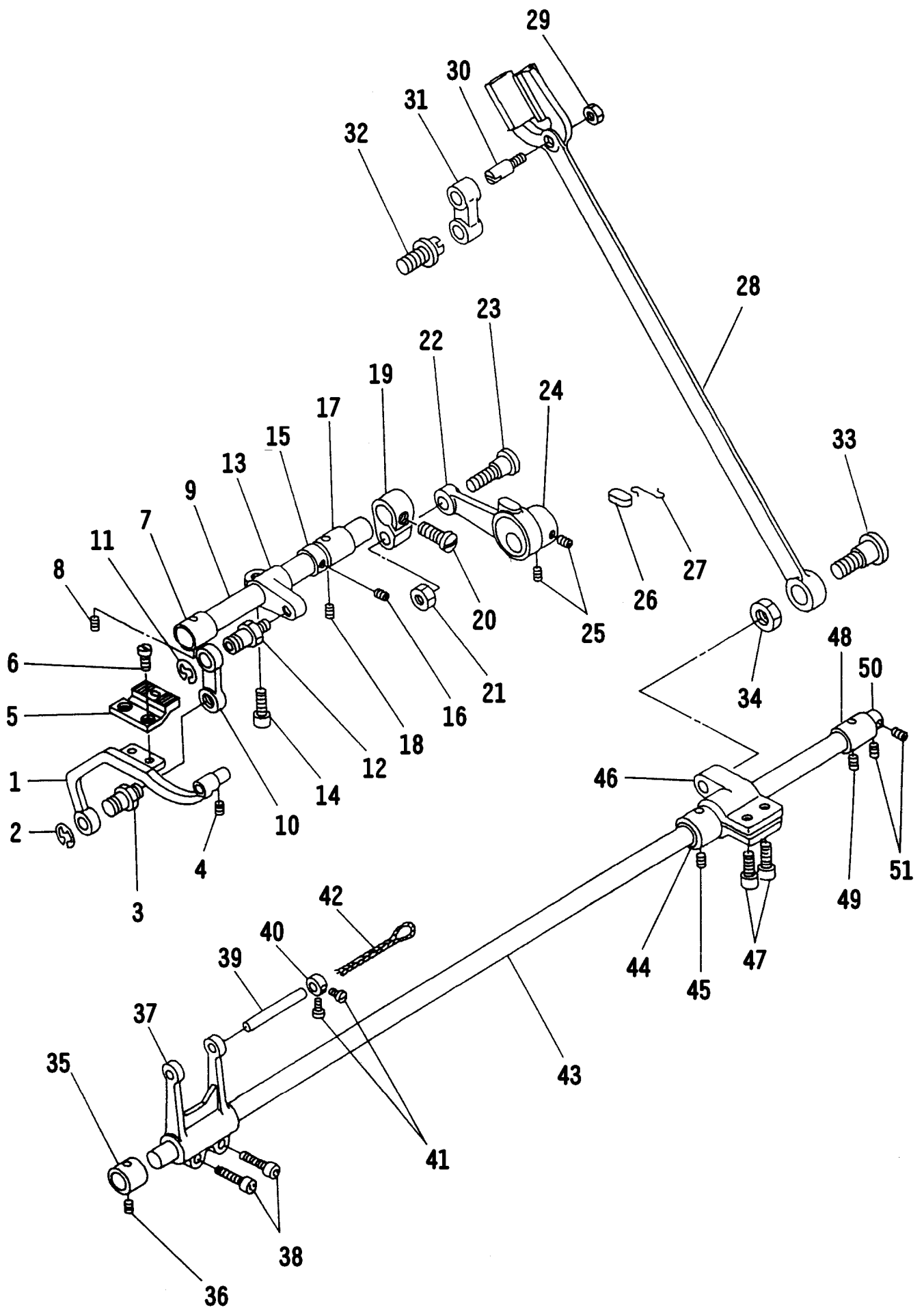
押棒機構



REF. NO.	NOTE	PART NO.	DESCRIPTION	名 稱	AMT.
1		210-50703	SCREW	押棒螺絲型套筒	1
2		210-51305	NUT	調整螺帽	1
3		210-50802	SPRING	壓縮彈簧	1
4		210-50505	PRESSER BAR	押棒	1
5		210-51800	GUIDE NUT	滾輪軸	1
6		210-51701	ROLLER FOLLOWER	滾輪軸	1
7		SS-6121210-SP	SCREW 3/16-28 L=12.0	螺絲	2
8		210-95005	PRESSER BAR GUIDE BRACKET	押棒提昇器	1
9		210-50604	PRESSER BAR BUSHING	押棒套筒	1
10		SS-8150410-SP	SCREW 15/64-28 L=4.0	螺絲	1
11		SS-7091410-SP	SCREW 9/64-40 L=13.5	螺絲	1
12		NS-6090310-SP	NUT 9/64-40	螺帽	1
13		210-95153	PRESSER FOOT ASM.	外押腳組	1
14		210-95104	PRESSER FOOT	外加腳	(1)
15		210-97506	GUARD	護手環	(1)
16		210-51503	GUIDE PLATE	導板	1
17		SS-7621040-SP	SCREW 3/16-32 L=9.5	螺絲	2
18		SS-6660622-TP	SCREW 1/4-40 L=6.0	螺絲	1
19		PS-0300201-KP	SPRING PIN 3.0 X 20.0	彈簧銷	1
20		210-51008	HAND LIFTER LINK	押棒固定座	1
21		210-51107	HAND LIFTER CAM	押棒偏心軸	1
22		B1662-562-000	COLLAR	定環	1
23		210-51602	THRUST COLLAR	定環	1
24		SS-8660522-TP	SCREW 1/4-40 L=4.5	螺絲	2
25		210-51206	HAND LIFTER LEVER	押棒提桿	1
26		210-51404	GRIP	押棒提桿膠球	1

6. FEED MECHANISM COMPONENTS

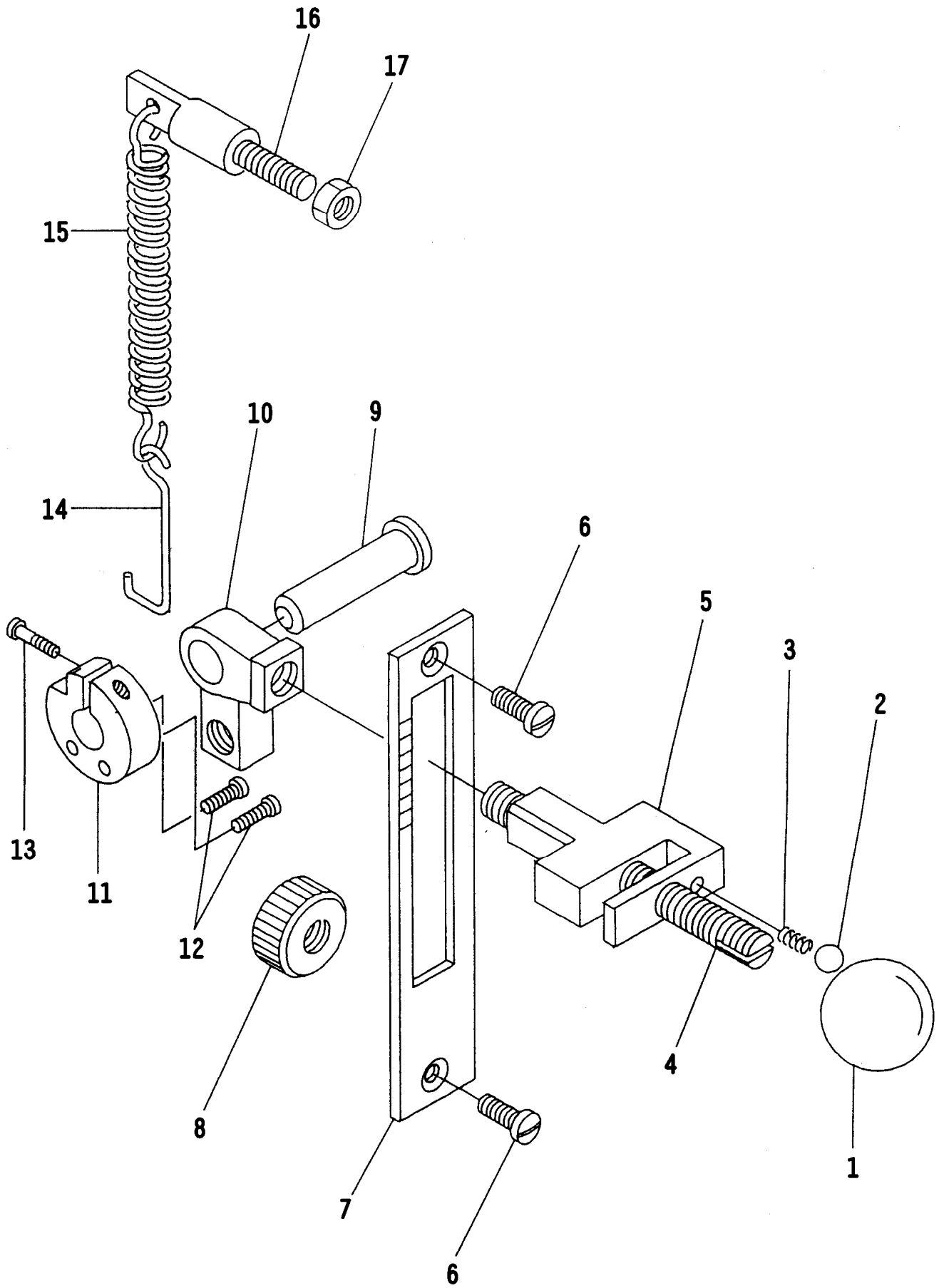
送齒機構



REF. NO.	NOTE	PART NO.	DESCRIPTION	名 稱	AMT.
1		210-52006	FEED BAR	送料台	1
2		RE-0800000-K0	E-RING (8MM)	E 型環	1
3		B1424-158-000	STUD	螺絲柱	1
4		SS-8620610-TP	SCREW	螺絲	1
5		210-95609	FEED DOG	送料齒	1
6		SS-4080620-TP	SCREW 9/64-40 L=6.0	螺絲	2
7		210-52600	DRIVING SHAFT BUSHING, FRONT	套筒(前)	1
8		SS-8151150-SP	SCREW 15/64-28 L=10.5	螺絲	1
9		210-53202	DRIVING SHAFT	送料軸	1
10		210-53004	FEED BAR LINK	連桿	1
11		RE-0800000-K0	E-RING (8MM)	E 型環	1
12		B1424-158-000	STUD	螺絲柱	1
13		210-53104	DRIVING SHAFT ARM. FRONT	連桿	1
14		SM-6061552-TP	SCREW M6x1 L=15.0	螺絲	1
15		CS-1471012-SH	THRUST COLLAR	套環	1
16		SS-8660610-TP	SCREW 1/4-40 L=6.0	螺絲	2
17		210-52501	DRIVING SHAFT BUSHING, REAR	套筒(後)	1
18		SS-8150710-SP	SCREW 15/64-28 L=7.0	螺絲	1
19		210-53509	DRIVING SHAFT ARM. REAR	送料軸曲柄	1
20		SS-6151920-SP	SCREW 15/64-28 L=19.0	螺絲	1
21		NS-6680410-SP	NUT 9/32-28	螺帽	1
22		210-53608	CAM ROD	連桿	1
23		SD-1000951-SP	HINGE SCREW	螺絲	1
24		210-53707	FEED DRIBING CAM	偏心輪	1
25		SS-8660522-TP	SCREW 1/4-40 L=5.0	螺絲	2
26		B1702-012-000	OIL FELT	油棉	1
27		B1213-012-000	FELT SPRING	彈簧	1
28		210-52808	ROD	連接叉桿	1
29		NS-6680410-SP	NUT 9/32-28	螺帽	1
30		B1617-241-H00	STUD A	螺絲柱	1
31		B1619-241-H00	LINK	連桿	1
32		B1618-241-H00	STUD B	螺絲柱	1
33		SD-1201201-TP	HINGE SCREW	螺絲	1
34		NS-6680410-SP	NUT 9/32-28	螺帽	1
35		210-52402	BUSHING, FRONT	搖動軸套筒(前)	1
36		SS-8151150-SP	SCREW 15/64-28 L=11.0	螺絲	1
37		210-52204	FEED BAR ARM	送料台連接座	1
38		SM-6061552-TP	SCREW M6x1 L=15.0	螺絲	2
39		210-52105	FEED BAR SHAFT	連接座軸	1
40		CS-0790721-TH	THRUST COLLAR	套環	1
41		SS-7090620-TP	SCREW 9/64-40 L=6.0	螺絲	2
42		CQ-2020000-00	OIL WICK	油線	0.13
43		210-52303	FEED ROCKER SHAFT	搖動軸	1
44		210-52501	BUSHING, CENTER	搖動軸套筒(中)	1
45		SS-8150710-SP	SCREW 15/64-28 L=7.0	螺絲	1
46		210-52709	FEED ROCKER SHAFT ARM, REAR	搖動軸曲柄	1
47		SM-6061552-TP	SCREW M6x1 L=15.0	螺絲	2
48		210-52600	BUSHING, REAR	搖動軸套筒(後)	1
49		SS-8151150-SP	SCREW 15/64-28 L=11.0	螺絲	1
50		CS-1471012-SH	THRUST COLLAR	套環	1
51		SS-8660610-TP	SCREW 1/4-40 L=6.0	螺絲	2

7. FEED REGULATOR MECHANISM COMPONENTS

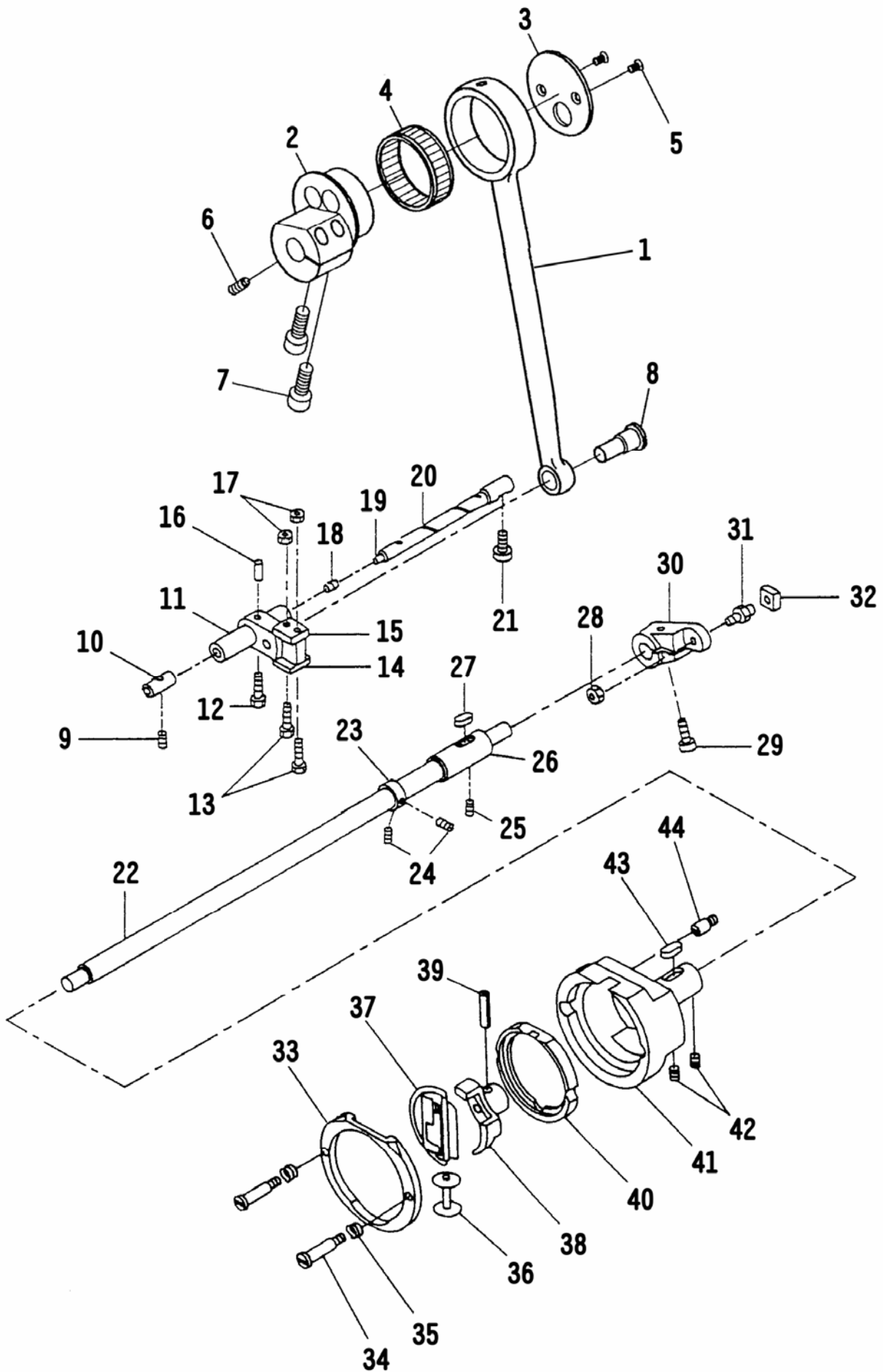
送齒調節機構



REF. NO.	NOTE	PART NO.	DESCRIPTION	名 稱	AMT.
1		210-54507	LEVER GRIP	調節桿膠球	1
2		210-54903	BALL	鋼珠	1
3		210-54804	SPRING	壓縮彈簧	1
4		210-54408	LEVER SHAFT	縫目調整桿	1
5		210-54606	LEVER GRIP	倒縫槓桿	1
6		SS-7150740-SP	SCREW 15/64-28 L=7.0	螺絲	2
7		210-54309	SIDE COVER	刻度板	1
8		210-54705	NUT	縫目調節環	1
9		210-54101	FEED REGULATOR SHAFT	送料調節器柱	1
10		210-54002	FEED REGULATOR	送料調節器	1
11		211-53903	SUPPORT PLATE	固定座	1
12		SS-6121610-SP	SCREW 3/16-28 L=15.5	螺絲	2
13		SS-6621840-SP	SCREW 3/16-32 L=18.0	螺絲	1
14		210-55207	SPRING SUSPENSION	彈簧勾	1
15		210-55009	SPRING	彈簧	1
16		210-55108	SPRING SUSPENSION SHAFT	彈簧螺絲柱	1
17		NS-6680340-SD	NUT 9/32-28	螺帽	1

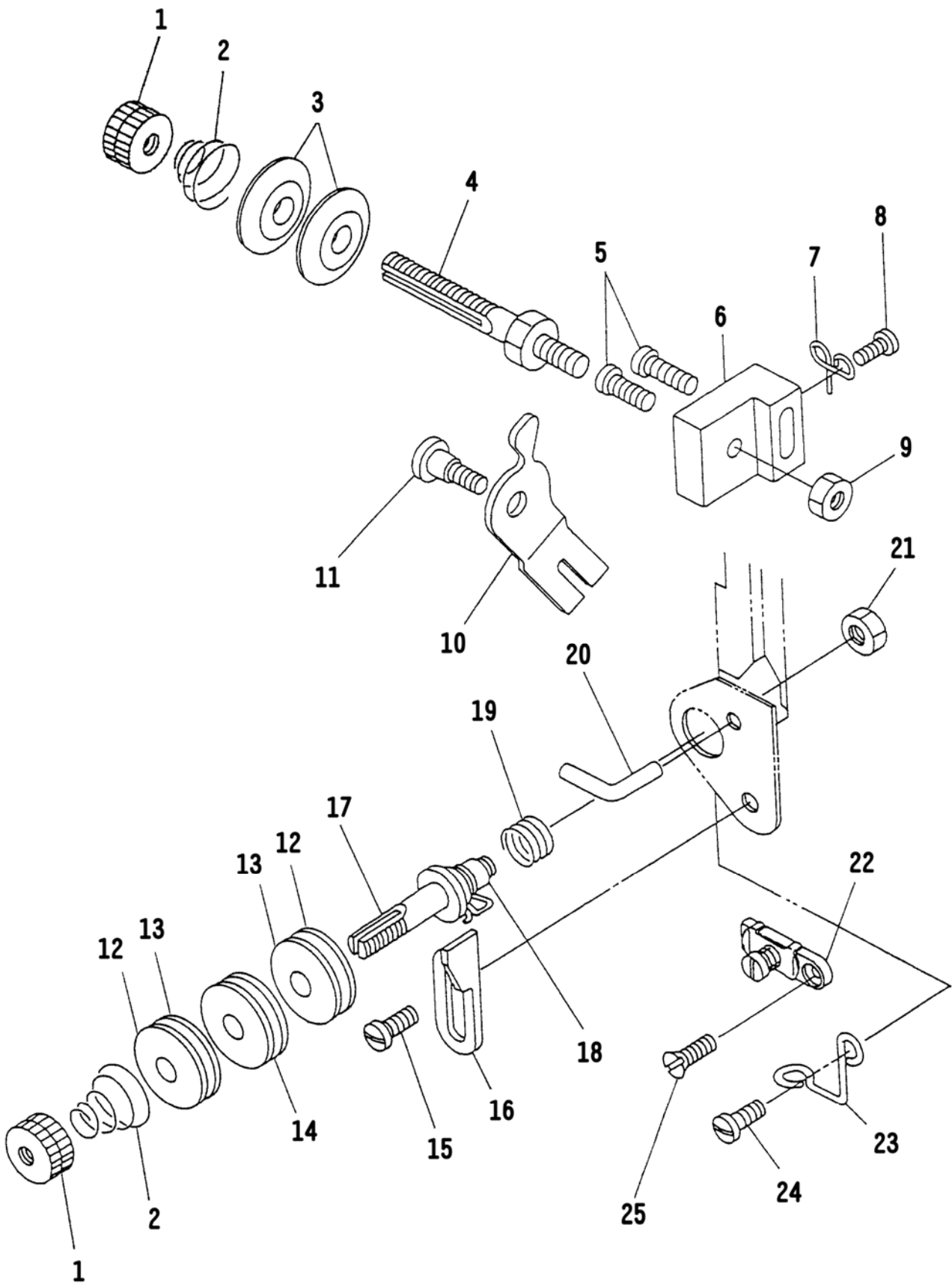
8. HOOK DRIVING SHAFT COMPONENTS

下軸機構



REF. NO.	NOTE	PART NO.	DESCRIPTION	名 稱	AMT.
1		210-55504	CONNECTING ROD	連桿	1
2		210-55603	CON-ROD ECCENTRIC CAM	偏心輪	1
3		210-55702	CAM SLIDE PLATE	連桿固定片	1
4		210-57609	CAGE & ROLLER	針狀軸承	1
5		SS-2110920-TP	SCREW 11/64-40 L=8.5	螺絲	2
6		SS-8151550-SP	SCREW 15/64-28 L=15.0	螺絲	1
7		SM-6083002-TP	SCREW M8x1.25 L=30.0	螺絲	2
8		210-57203	CON-ROD PIN	連結軸	1
9		SS-8150750-SP	SCREW 15/64-28 L=7.0	螺絲	1
10		210-56007	ROCK SHAFT BUSHING	搖動柄軸套筒	1
11		210-55801	OSCILATING ROCK SHAFT	搖動柄軸	1
12		SS-7621510-SP	SCREW 3/16-32 L=15.0	螺絲	1
13		210-57708	SCREW 11/64-40 L=21.0	螺絲	2
14		210-57005	SLIDE PLATE A	固定板 A	1
15		210-57104	SLIDE PLATE B	固定板 B	1
16		210-57302	CON-ROD PIN WEDGE	銷	1
17		NS-6110420-SP	NUT 11/64-40	螺帽	2
18		TA-0290301-M0	PLUG 2.9 x 3.2 x 3.0	止栓	1
19		CQ-3030000-00	OIL WICK	油線	0.1
20		210-55900	HINGE PIN	搖動柄軸	1
21		SS-6151142-TP	SCREW 15/64-28 L=10.5	螺絲	1
22		210-56403	HOOK DRIVING SHAFT	下軸	1
23		CS-1471012-SH	THRUST COLLAR D=14.72 W=10.0	定環	1
24		SS-8660330-SP	SCREW 1/4-40 L=3.0	螺絲	2
25		SS-8150710-SP	SCREW 15/64-28 L=15.0	螺絲	1
26		210-56601	DRIVING SHAFT BUSHING, REAR	下軸套筒(後)	1
27		B1806-038-000	OIL FELT	油棉	1
28		NS-6680320-SP	NUT 9/32-28	螺帽	1
29		SM-6081802-TP	SCREW M8x1.25 L=18.0	螺絲	1
30		210-56106	HOOK DRIVING SHAFT CRANK	連接柄	1
31		210-56304	SLIDE BROCK STUD	螺絲柱	1
32		210-56205	CRANK SLIDE BLOCK	滑塊	1
33		210-56908	HOOK COVER	梭頭蓋	1
34		210-57906	SCREW	梭頭蓋螺絲	2
35		210-57500	HOOK COUNTER SPRING	壓縮彈簧	2
36		210-57401	BOBBIN	梭仔	1
37		210-41850	HOOK ASM.	梭頭	1
38		210-56700	SHUTTLE DRIVER	梭頭驅動柄	1
39		PT-0402200-SH	TAPERED PIN 4.0 x 18.0	推拔銷	1
40		210-56809	SHUTTLE RACE BODY	梭頭導環座	1
41		210-56502	DRIVING SHAFT BUSHING, FRONT	下軸套筒(前)	1
42		SS-8151550-SP	SCREW 15/64-28 L=15.0	螺絲	2
43		B1702-012-000	OIL FELT	油棉	1
44		210-57807	SCREW 15/64-28	螺絲	1

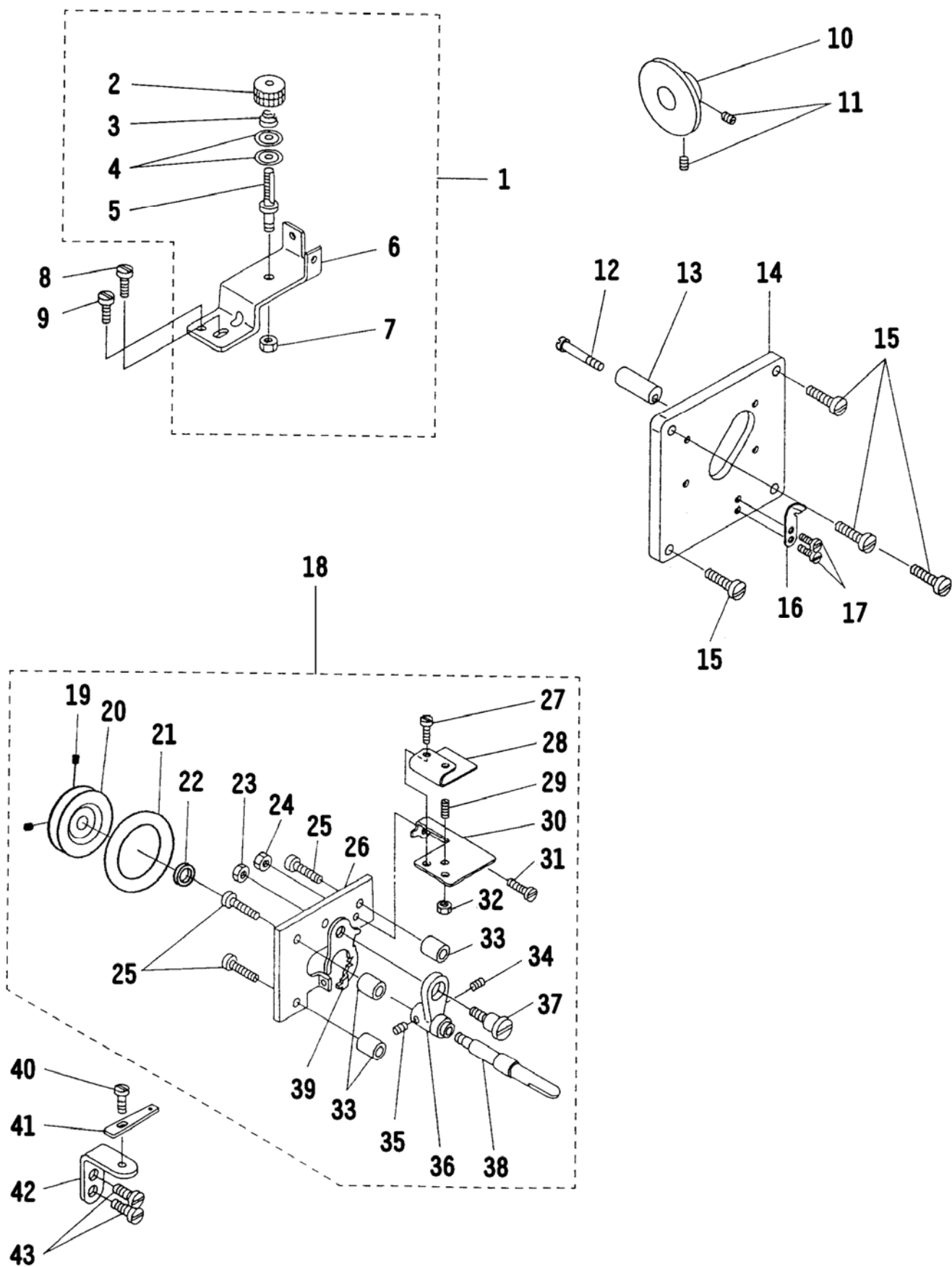
9. TENSION POST COMPONENTS
線調節器機構



REF. NO.	NOTE	PART NO.	DESCRIPTION	名稱	AMT.
1		B3125-012-000	THREAD TENSION STUD NUT	螺帽	2
2		210-59100	THREAD TENSION SPRING	壓縮彈簧	2
3		B3126-012-000	TENSION DISC	壓線盤	2
4		210-59001	THREAD TENSION POST	調整螺絲桿	1
5		SS-7111120-SP	SCREW 11/64-40 L=10.5	螺絲	2
6		210-59209	THREAD TENSION POST BRACKET	彈簧座	1
7		210-59308	THREAD TENSION GUIDE	線掛組	1
8		SS-7090710-SP	SCREW 9/64-40 L=6.8	螺絲	1
9		NS-6680320-SP	NUT 9/32-28	螺帽	1
10		210-59407	THREAD RELEASING PLATE	鬆線器	1
11		SD-0600321-SP	HINGE SCREW D=6.0 H=3.2	螺絲	1
12		210-60207	FELT SUPPORT PLATE	棉環側盤	2
13		210-60108	WHEEL FELT	棉環側盤	2
14		210-60009	THREAD TENSION WHEEL	調整線輪	1
15		SS-7090610-SP	SCREW 9/64-40 L=6.0	螺絲	1
16		210-59803	SPRING SUPPORTPLATE	線軸彈簧調整器	1
17		210-59902	THREAD TENSION WHEEL POST	調整螺絲桿	1
18		210-59605	SPRING A	吊線彈簧	1
19		210-59704	THREAD TAKE-UP SPRING GUIDE	吊線彈簧	1
20		210-59506	SLACK THREAD GUIDE	線掛	1
21		NS-6150310-SP	NUT 15/64-28	螺帽	1
22		D1129-141-EA0	ARM THREAD GUIDE BOTTOM ASM.	線掛組	1
23		B1131-562-000	FRAME THREAD GUIDE, LOWER	線掛(下)	1
24		SS-7090710-SP	SCREW 9/64-40 L=6.8	螺絲	1
25		SS-1090410-SL	SCREW 9/64-40 L=4.0	螺絲	1

10. THREAD WINDER & THREAD GUIDE COMPONENTS

捲線器，穿線機構

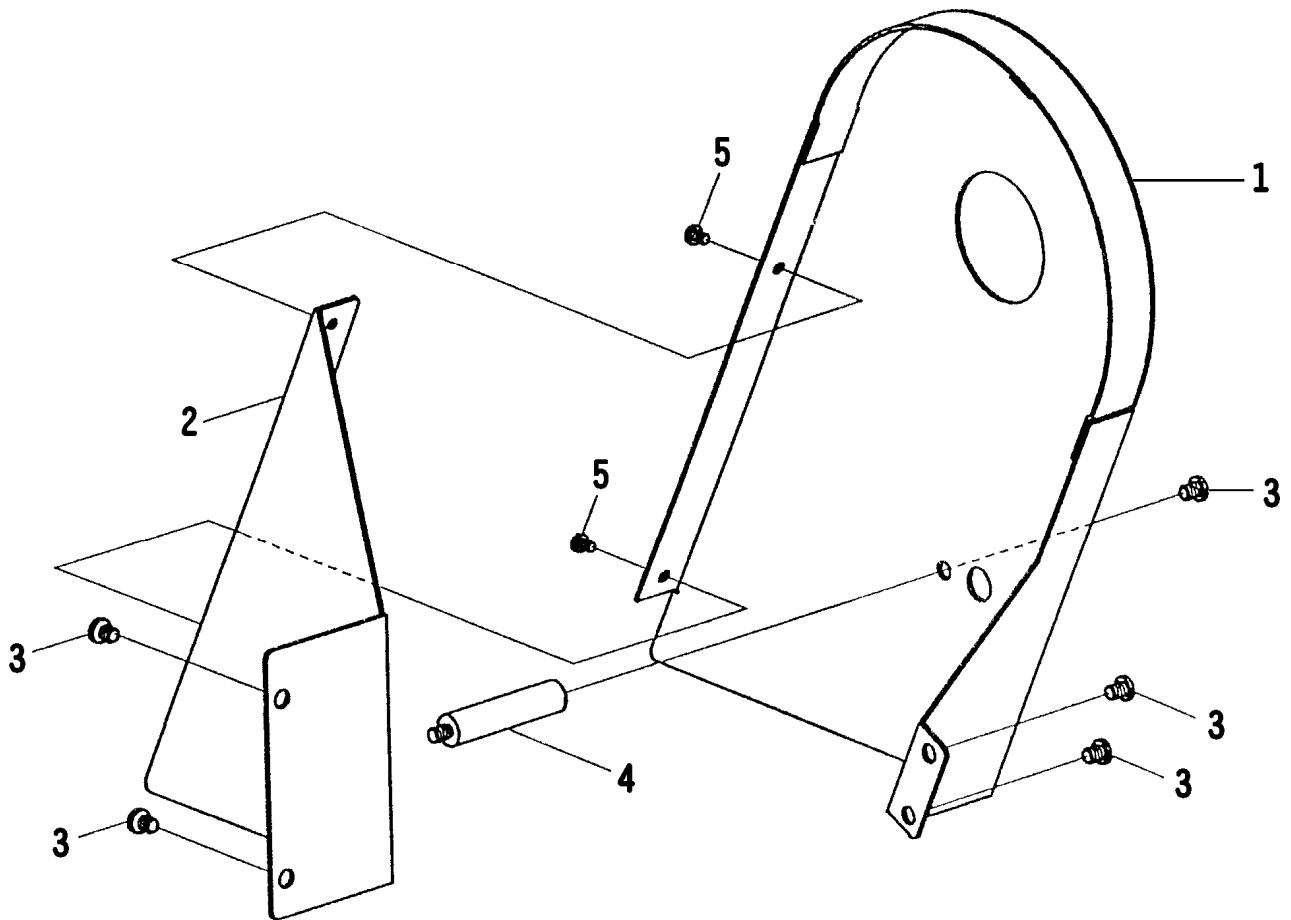


REF. NO.	NOTE	PART NO.	DESCRIPTION	名 稱	AMT.
1		210-61759	THREAD WINDER GUIDE BASE ASM.	壓力調整器組	1
2		B3125-012-000	THREAD TENSION STUD NUT	螺帽	(1)
3		B3129-012-B00	TENSION SPRING B	壓縮彈簧	(1)
4		B3126-012-000	TENSION DISC	壓線盤	(2)
5		210-59001	THREAD TENSION POST	調整螺絲桿	(1)
6		210-61700	THREAD WINDER GUIDE BASE ASM.	壓力調整器座	(1)
7		NS-6680320-SP	NUT 9/32-28	螺帽	(1)
8		SS-7110910-SP	SCREW 11/64-40 L=9.0	螺絲	1
9		SS-4080610-SP	SCREW 1/8-44 L=6.4	螺絲	1
10		210-61601	FRICTION WHEEL	摩擦輪	1
11		SS-8150710-SP	SCREW 15/64-28 L=7.0	螺絲	2
12		SS-7112810-SP	SCREW 11/64-40 L=28.0	螺絲	1
13		210-61403	STOPPER	定位銷	1
14		210-42908	THREAD WINDER PLATE	捲線器座板	1
15		SS-7111120-SP	SCREW 11/64-40 L=10.5	螺絲	4
16		210-61502	THREAD CUT & CLAMP PLATE	切線片	1
17		SS-6080410-SP	SCREW 1/8-44 L=4.0	螺絲	2
18		210-61056	THREAD WINDER ASM.	捲線器組	1
19		SS-8090540-SP	SCREW 11/64-40 L=5.0	螺絲	(2)
20		B3203-232-000	BOBBIN WINDER WORM WHEEL	驅動輪	(1)
21		B3209-232-000	BOBBIN WINDER FRAME	O型環	(1)
22		B3207-158-000	THREAD WINDING SHAFT COLLAR	定環	(1)
23		NS-6110310-SP	NUT 11/64-40	螺帽	(1)
24		NS-6110310-SP	NUT 11/64-40	螺帽	(1)
25		SS-7111810-SP	SCREW 11/64-40 L=18.0	螺絲	(3)
26		B3201-158-000	THREAD WINDER BASE	捲線器基板	(1)
27		SS-5060410-SP	SCREW 3/32-56 L=3.5	螺絲	(2)
28		210-61205	BOBBIN PRESSURE SPRING	彈簧板	(1)
29		D2443-141-E00	ADJUSTING SCREW	調整螺絲	(1)
30		210-61106	BOBBIN PRESSER	壓力板	(1)
31		SD-0720193-SP	HINGE SCREW D=7.24 H=1.9	螺絲	(1)
32		NS-6080210-SP	NUT 1/8-44	螺帽	(1)
33		B3203-158-000	WASHER	墊圈	(3)
34		B3208-232-000	SPRING	壓縮彈簧	(1)
35		A3222-958-000	BOBBIN WINDER SPRING, LONG	壓縮彈簧	(1)
36		B3204-232-000	BOBBIN WINDER FRAME	捲線柄	(1)
37		B3205-232-000	HINGE SCREW	螺絲	(1)
38		210-61007	THREAD WINDER SHAFT	捲線軸	(1)
39		B3206-232-000	BOBBIN WINDER TENSION BRACKET	捲線壓力板	(1)
40		SS-7090710-SP	SCREW 9/64-40 L=6.8	螺絲	1
41		B2510-158-000	THREAD WINDER THREAD GUIDE	線掛	1
42		210-61908	GUIDE BRACKET	線掛座	1
43		SS-7151120-SP	SCREW 15/64-28 L=11.0	螺絲	2

REF. NO.	NOTE	PART NO.	DESCRIPTION	名 稱	AMT.
1		SD-0790431-SP	HINGE SCREW D=7.94 H=4.3	螺絲	2
2		SD-0790431-SP	HINGE SCREW D=7.94 H=4.3	螺絲	2
3		210-62807	PRESSER BAR LIFTING LINK	押棒上升臂	2
4		210-62609	HINGE SCREW D=7.94 H=4.3	螺絲	1
5		210-62500	PRESSER BAR LIFTING BAR	押棒上升桿	1
6		210-62708	LINK BASE	連接座	1
7		SS-7150740-SP	SCREW 15/64-28 L=7.0	螺絲	2
8		210-62906	SIDE CONNECTING BAR	押棒側提升桿	1
9		B3413-227-000	SPRING SUSPENSION	彈簧鉤螺絲	1
10		B1513-280-000	PRESSER BAR LIFTING SPRING	拉伸彈簧	1
11		181-25609	LINK COLLAR	定環	1
12		SD-1000701-TP	HINGE SCREW	螺絲	1
13		210-63003	UPRIGHT CONNECTING BAR	押棒提升桿	1
14		210-63102	CONNECTING BAR JOINT	提升桿連接頭	1
15		NS-6620310-SP	NUT 3/16-32	螺帽	1
16		SS-7620750-SP	SCREW 3/16-32 L=6.5	螺絲	1
17		210-63201	KNEE LIFTER LEVER	提升桿連接器	1
18		SD-1111351-SP	HINGE SCREW 3/8-28	螺絲	1
19		210-63300	ROLLER STUD	滾輪螺絲柱	1
20		210-63409	ROLLER	滾輪	1
21		210-63607	KNEE LIFTING BAR	曲桿	1
22		SS-9681610-TP	SCREW 5/16-24 L=13.0	螺絲	1
23		SS-7681650-TP	SCREW 9/32-28 L=16.0	螺絲	1
24		210-63904	PIN	銷	1
25		210-63706	KNEE LIFTING BAR BROCK	連接器	1
26		B3429-521-000	RETURN SPRING	回復彈簧	1
27		SS-7110910-TP	SCREW 11/64-40 L=8.5	螺絲	2
28		210-63805	PRESSER REGULATORY COLLAR	壓力調整環	1
29		210-63508	KNEE PRESS SIDE SHAFT	直桿	1
30		B3432-521-000	JOINT PIN	銷	1

12. BELT COVER COMPONENTS

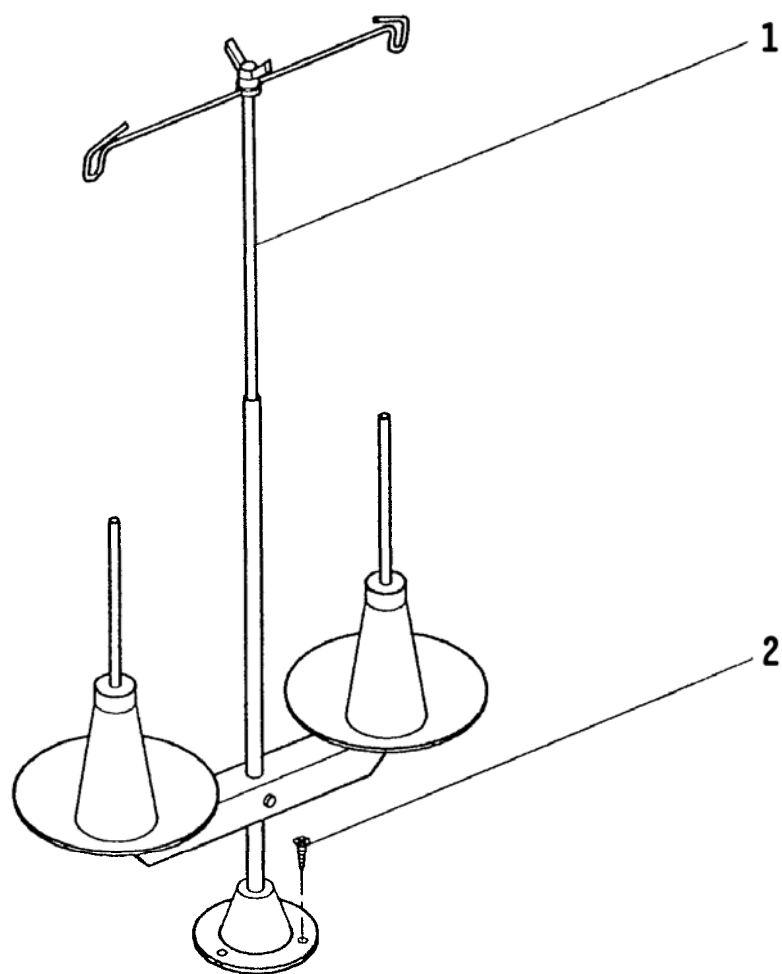
皮帶蓋機構



REF. NO.	NOTE	PART NO.	DESCRIPTION	名稱	AMT.
1	#01	210-64100	BELT COVER, A	皮帶蓋 A	1
2	#01	210-64209	BELT COVER, B	皮帶蓋 B	1
3	#01	SS-7150740-SP	SCREW 15/64-28 L=7.0	螺絲	5
4	#01	211-57300	BELT COVER STUD	皮帶蓋螺絲柱	1
5	#01	SS-6110480-SP	SCREW 11/64-40 L=4.3	螺絲	2
			Note: #01..... Optional Part	選購品	

13. THREAD STAND COMPONENTS

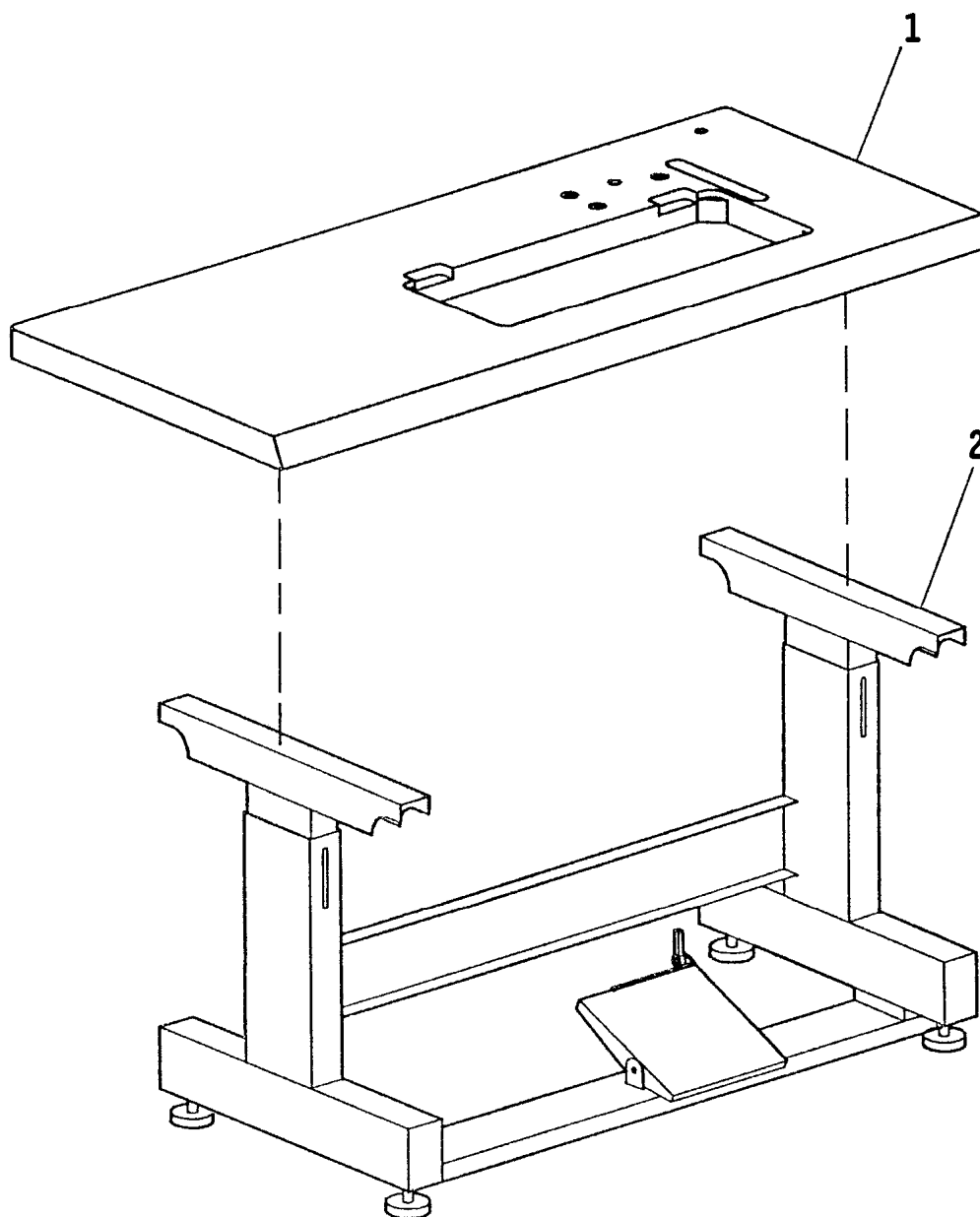
線架機構



REF. NO.	NOTE	PART NO.	DESCRIPTION	名 稱	AMT.
1		B3301-012-0A0	THREAD STAND ASM.	線架組	1
2		SK-3452000-SE	WOOD SCREW D=4.5 L=20.0	木螺絲	3

14. TABLE & STAND COMPONENTS

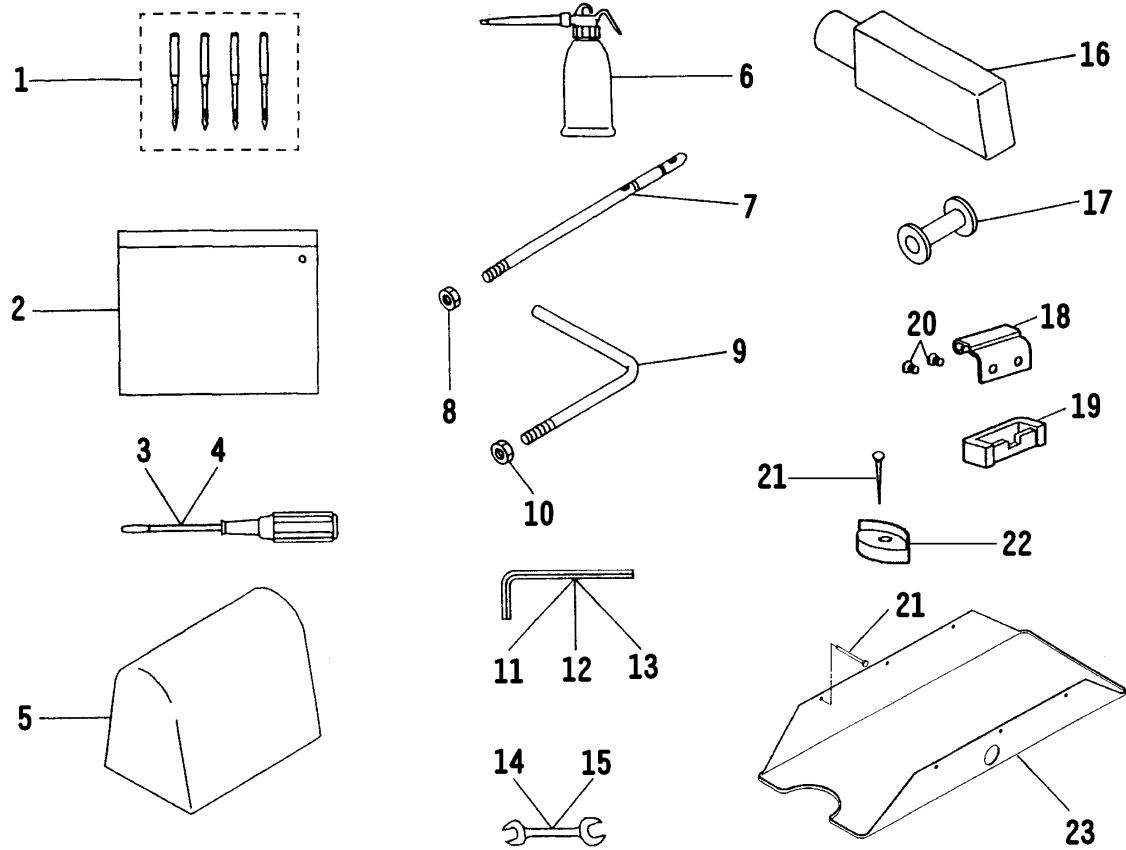
車板,車腳機構



REF. NO.	NOTE	PART NO.	DESCRIPTION	名 稱	AMT.
1		210-43104	TABLE	車板	1
2		210-65156	STAND	車腳	1

15. ACCESSORIES PARTS COMPONENTS (1/2)

附屬品機構 (1/2)



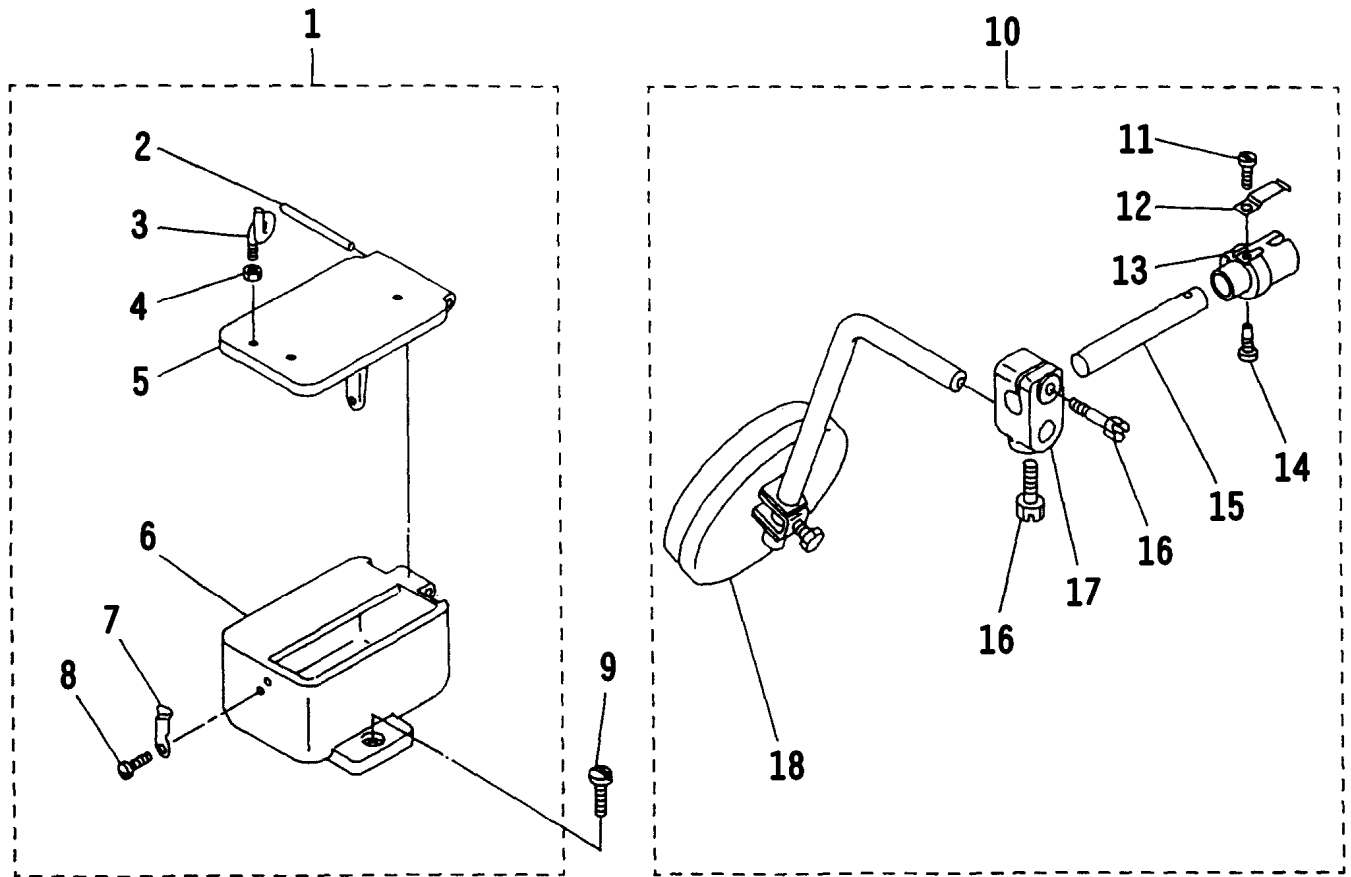
REF. NO.	NOTE	PART NO.	DESCRIPTION	名稱	AMT.
1		MC-5320023-04	NEEDLE (794 NM=230-4)	針	4
2		B9101-552-000	ACCESSORY BOX	工具盒	1
3		B9109-555-000	SCREW DRIVER, LARGE	螺絲起子(大)	1
4		B9106-804-000	SCREW DRIVER, SMALL	螺絲起子(小)	1
5		105-29808	COVER	車頭蓋	1
6		B9121-141-HA0	OILER ASM.	油壺	1
7		B1114-517-000	NEEDLE THREAD GUIDE PIN	線柱	1
8		NS-6620310-SP	NUT 3/16-32	螺帽	1
9	#01	210-64605	SUPPORTING ARM	支撐桿	1
10	#01	NS-6150430-SP	NUT 15/64-28	螺帽	1
11		J1066-000-00D	HEXAGONAL WRENCH KEY 3	六角板手	1
12		J1066-000-00F	HEXAGONAL WRENCH KEY 4	六角板手	1
13		J1066-000-00G	HEXAGONAL WRENCH KEY 5	六角板手	1
14		B9112-012-000	WRENCH (11 x 14)	開口板手(11 x 14)	1
15		B9113-012-000	WRENCH (9 x 10)	開口板手(9 x 10)	1
16		210-64506	SUPPORTING BLOCK	枕木	1
17		210-57401	BOBBIN	梭仔	3
18		B8213-512-000	HINGE	後鈕扣	2
19		D8212-555-E00	RUBBER SEAT	後鈕座	2
20		SS-1681140-SP	SCREW 9/32-28 L=11.0	螺絲	2
21		105-39906	NAIL	鐵釘	8
22		B8209-012-000	RUBBER	防震橡膠	4
23		210-64001	OIL PAN	油槽	1

Note: #01..... Optional Part

選購品

16. ACCESSORIES PARTS COMPONENTS (2/2)

附屬品機構 (2/2)



REF. NO.	NOTE	PART NO.	DESCRIPTION	名稱	AMT.
1		210-64753	OIL POT ASM.	油壺組	1
2		210-65206	PIN	銷	(1)
3		B3114-761-000	FRAME THREAD GUIDE B	線掛	(1)
4		NS-6060350-SP	NUT 3/32-56	螺帽	(1)
5		210-64704	OIL POT COVER	油壺蓋	(1)
6		210-64803	OIL POT	油壺	(1)
7		210-64902	COVER STOPPER	彈簧板	(1)
8		SS-7110710-SP	SCREW 11/64-40 L=6.8	螺絲	(1)
9		SS-7151210-SP	SCREW 15/64-28 L=12.0	螺絲	1
10		210-65057	KNEE PRESS ASM.	腳弓組	1
11		SS-7090510-SP	SCREW 9/64-40 L=5.0	螺絲	(1)
12		B3428-521-000	KNEE PRESS SPRING	彈簧	(1)
13		B3430-521-000	KNEE LIFTER JOINT	連接器	(1)
14		SS-7151550-SP	SCREW 15/64-28 L=14.5	螺絲	(1)
15		210-65008	SHAFT	連接桿	(1)
16		SS-9182010-SN	SCREW 5/16-24 L=21.0	螺絲	(2)
17		B3427-521-000	KNEE PRESS SUPPORTING ARM	腳弓連接器	(1)
18		110-23751	KNEE PRESS BRACKET	腳弓	(1)

15. NUMERICAL INDEX OF PARTS

零件索引

Part No.	Page	Ref. No.	Part No.	Page	Ref. No.	Part No.	Page	Ref. No.
105-19502	2	28	210-50802	8	3	210-56205	14	32
105-29808	25	5	210-51008	8	20	210-56304	14	31
105-39906	25	21	210-51107	8	21	210-56403	14	22
			210-51206	8	25	210-56502	14	41
110-23751	26	18	210-51305	8	2	210-56601	14	26
			210-51404	8	26	210-56700	14	38
181-25609	20	11	210-51503	8	16	210-56809	14	40
			210-51602	8	23	210-56908	14	33
210-40555	2	22	210-51701	8	6	210-57005	14	14
210-41850	14	37	210-51800	8	5	210-57104	14	15
210-42908	18	14	210-52006	10	1	210-57203	14	8
210-43104	24	1	210-52105	10	39	210-57302	14	16
210-44102	1	8	210-52204	10	37	210-57401	14	36
210-44151	1	7	210-52303	10	43	210-57401	25	17
210-44201	1	9	210-52402	10	35	210-57500	14	35
210-44300	1	3	210-52501	10	17	210-57609	14	4
210-44508	2	15	210-52501	10	44	210-57708	14	13
210-44607	2	10	210-52600	10	7	210-57807	14	44
210-44706	2	16	210-52600	10	48	210-57906	14	34
210-44805	2	21	210-52709	10	46	210-59001	16	4
210-44904	2	7	210-52808	10	28	210-59001	18	5
210-45109	2	4	210-53004	10	10	210-59100	16	2
210-45406	2	11	210-53104	10	13	210-59209	16	6
210-45505	2	20	210-53202	10	9	210-59308	16	7
210-45604	2	2	210-53509	10	19	210-59407	16	10
210-45703	2	13	210-53608	10	22	210-59506	16	20
210-46107	2	29	210-53707	10	24	210-59605	16	18
210-46206	2	30	210-54002	12	10	210-59704	16	19
210-46305	2	27	210-54101	12	9	210-59803	16	16
210-48707	4	2	210-54309	12	7	210-59902	16	17
210-48707	4	19	210-54408	12	4	210-60009	16	14
210-48707	6	2	210-54408	12	11	210-60108	16	13
210-49200	4	15	210-54507	12	1	210-60207	16	12
210-49309	4	13	210-54606	12	5	210-61007	18	38
210-49408	4	1	210-54705	12	8	210-61056	18	18
210-49507	4	11	210-54804	12	3	210-61106	18	30
210-49606	4	6	210-54903	12	2	210-61205	18	28
210-49705	4	7	210-55009	12	15	210-61403	18	13
210-49804	4	8	210-55108	12	16	210-61502	18	16
210-49903	4	17	210-55207	12	14	210-61601	18	10
210-50000	4	14	210-55504	14	1	210-61700	18	6
210-50000	4	36	210-55603	14	2	210-61759	18	1
210-50109	4	12	210-55702	14	3	210-61908	18	42
210-50109	4	37	210-55801	14	11	210-62500	20	5
210-50505	8	4	210-55900	14	20	210-62609	20	4
210-50604	8	9	210-56007	14	10	210-62708	20	6
210-50703	8	1	210-56106	14	30	210-62807	20	3

15. NUMERICAL INDEX OF PARTS

零件索引

Part No.	Page	Ref. No.	Part No.	Page	Ref. No.	Part No.	Page	Ref. No.
210-62906	20	8	210-93901	6	3	B3301-012-0A0	23	1
210-63003	20	13	210-94008	6	4	B3413-227-000	20	9
210-63102	20	14	210-94701	6	5	B3427-521-000	26	17
210-63201	20	17	210-94800	6	9	B3428-521-000	26	12
210-63300	20	19	210-94909	6	10	B3429-521-000	20	26
210-63409	20	20	210-95005	8	8	B3430-521-000	26	13
210-63508	20	29	210-95104	8	14	B3432-521-000	20	30
210-63607	20	21	210-95153	8	13	B8209-012-000	25	22
210-63706	20	25	210-95609	10	5	B8213-512-000	25	18
210-63805	20	28	210-97506	8	15	B9101-552-000	25	2
210-63904	20	24				B9106-804-000	25	4
210-64001	25	23	211-51402	2	18	B9109-555-000	25	3
210-64100	22	1	211-57300	22	4	B9112-012-000	25	14
210-64209	22	2	211-90600	1	13	B9113-012-000	25	15
210-64506	25	16				B9121-141-HA0	25	6
210-64605	25	9	A3222-958-000	18	35			
210-64704	26	5				CQ-2020000-00	2	9
210-64753	26	1	B1114-517-000	25	7	CQ-2020000-00	6	11
210-64803	26	6	B1131-562-000	16	23	CQ-2020000-00	10	42
210-64902	26	7	B1156-026-000	1	12	CQ-3030000-00	14	19
210-65008	26	15	B1213-012-000	10	27			
210-65057	26	10	B1424-158-000	10	3	CS-0790721-TH	10	40
210-65156	24	2	B1424-158-000	10	12	CS-1471012-SH	10	15
210-65206	26	2	B1513-280-000	20	10	CS-1471012-SH	10	50
210-84107	6	6	B1617-241-H00	10	30	CS-1471012-SH	14	23
210-90253	1	1	B1618-241-H00	10	32	CS-1801211-SH	4	28
210-90709	1	5	B1619-241-H00	10	31			
210-91707	2	1	B1662-562-000	8	22	D1129-141-EA0	16	22
210-91806	2	26	B1702-012-000	10	26	D2443-141-E00	18	29
210-92002	6	19	B1702-012-000	14	43	D8212-555-E00	25	19
210-92101	6	13	B1806-038-000	14	27			
210-92200	6	25	B2510-158-000	18	41	J1066-000-00D	25	11
210-92309	6	18	B3114-761-000	26	3	J1066-000-00F	25	12
210-92408	6	20	B3125-012-000	16	1	J1066-000-00G	25	13
210-92507	4	26	B3125-012-000	18	2			
210-92606	4	25	B3126-012-000	16	3	MC-5320023-00	6	22
210-92705	4	29	B3126-012-000	18	4	MC-5320023-04	25	1
210-92804	4	23	B3129-012-B00	18	3			
210-92903	4	32	B3201-158-000	18	26	NS-6060350-SP	26	4
210-93000	4	20	B3203-158-000	18	33	NS-6080210-SP	18	32
210-93109	4	35	B3203-232-000	18	20	NS-6090310-SP	8	12
210-93208	6	26	B3204-232-000	18	36	NS-6110310-SP	18	23
210-93307	6	29	B3205-232-000	18	37	NS-6110310-SP	18	24
210-93406	6	12	B3206-232-000	18	39	NS-6110420-SP	14	17
210-93505	6	14	B3207-158-000	18	22	NS-6150310-SP	16	21
210-93604	6	30	B3208-232-000	18	34	NS-6150430-SP	25	10
210-93704	4	39	B3209-232-000	18	21	NS-6620310-SP	20	15

15. NUMERICAL INDEX OF PARTS

零件索引

Part No.	Page	Ref. No.	Part No.	Page	Ref. No.	Part No.	Page	Ref. No.
NS-6620310-SP	25	8	SM-6083002-TP	14	7	SS-7150740-SP	22	3
NS-6680320-SP	14	28	SM-8061012-TP	6	15	SS-7151120-SP	6	23
NS-6680320-SP	16	9	SM-8061212-TP	6	16	SS-7151120-SP	18	43
NS-6680320-SP	18	7	SM-8061212-TP	6	28	SS-7151210-SP	26	9
NS-6680340-SD	12	17	SM-8061212-TP	6	31	SS-7151550-SP	4	21
NS-6680410-SP	2	5				SS-7151550-SP	26	14
NS-6680410-SP	2	24	SS-1090410-SL	16	25	SS-7620750-SP	20	16
NS-6680410-SP	4	34	SS-1681140-SP	2	3	SS-7621040-SP	8	17
NS-6680410-SP	10	21	SS-1681140-SP	25	20	SS-7621510-SP	14	12
NS-6680410-SP	10	29	SS-2110915-SP	1	4	SS-7681650-TP	20	23
NS-6680410-SP	10	34	SS-2110915-SP	1	6	SS-8090540-SP	18	19
NS-6720440-SP	4	9	SS-2110915-SP	2	19	SS-8150410-SP	8	10
NS-6720440-SP	4	38	SS-2110920-TP	14	5	SS-8150710-SP	2	17
			SS-4080610-SP	18	9	SS-8150710-SP	4	5
PS-0300201-KP	8	19	SS-4080620-TP	10	6	SS-8150710-SP	4	24
			SS-5060410-SP	18	27	SS-8150710-SP	4	30
PT-0402200-SH	14	39	SS-6080410-SP	18	17	SS-8150710-SP	10	18
PT-0405600-SH	2	6	SS-6110480-SP	22	5	SS-8150710-SP	10	45
			SS-6110710-TP	6	21	SS-8150710-SP	14	25
RE-0400000-K0	2	31	SS-6121210-SP	8	7	SS-8150710-SP	18	11
RE-0800000-K0	4	3	SS-6121610-SP	12	12	SS-8150750-SP	14	9
RE-0800000-K0	4	18	SS-6151142-TP	14	21	SS-8151150-SP	10	8
RE-0800000-K0	6	1	SS-6151920-SP	1	2	SS-8151150-SP	10	36
RE-0800000-K0	10	2	SS-6151920-SP	10	20	SS-8151150-SP	10	49
RE-0800000-K0	10	11	SS-6621840-SP	12	13	SS-8151550-SP	2	12
			SS-6660622-TP	8	18	SS-8151550-SP	14	6
SD-0600321-SP	16	11	SS-7060310-SP	1	10	SS-8151550-SP	14	42
SD-0720193-SP	18	31	SS-7090510-SP	26	11	SS-8620610-TP	10	4
SD-0790431-SP	20	1	SS-7090610-SP	16	15	SS-8660330-SP	14	24
SD-0790431-SP	20	2	SS-7090620-TP	10	41	SS-8660510-TP	4	27
SD-1000701-TP	20	12	SS-7090710-SP	1	14	SS-8660512-TP	4	22
SD-1000951-SP	10	23	SS-7090710-SP	16	8	SS-8660522-TP	6	17
SD-1070901-TP	2	25	SS-7090710-SP	16	24	SS-8660522-TP	8	24
SD-1111351-SP	20	18	SS-7090710-SP	18	40	SS-8660522-TP	10	25
SD-1201201-TP	4	33	SS-7091410-SP	8	11	SS-8660610-TP	2	14
SD-1201201-TP	10	33	SS-7110540-SP	6	8	SS-8660610-TP	4	16
			SS-7110710-SP	26	8	SS-8660610-TP	10	16
SK-3452000-SE	23	2	SS-7110840-SP	6	7	SS-8660610-TP	10	51
			SS-7110910-SP	18	8	SS-8660612-TP	2	8
SM-6061552-TP	4	4	SS-7110910-TP	20	27	SS-9182010-SN	26	16
SM-6061552-TP	4	31	SS-7111120-SP	6	24	SS-9201813-CP	4	10
SM-6061552-TP	4	40	SS-7111120-SP	16	5	SS-9681610-TP	20	22
SM-6061552-TP	6	27	SS-7111120-SP	18	15	SS-9702110-SP	2	23
SM-6061552-TP	10	14	SS-7111810-SP	18	25			
SM-6061552-TP	10	38	SS-7112810-SP	18	12	TA-0290301-M0	14	18
SM-6061552-TP	10	47	SS-7150740-SP	12	6	TA-1250406-R0	1	11
SM-6081802-TP	14	29	SS-7150740-SP	20	7			