

# MODEL: CK-1508NH

1 needle, Unison-feed, Lockstitch Machine with Large Hook for Heavy-Weight Materials

單針綜合送料縫紉機（大釜、厚料）

---

## PARTS LIST

### 零件表



**Chikon Industrial Sewing Machine Co., Ltd.**

2011-07

## SPECIFICATIONS / 規格表

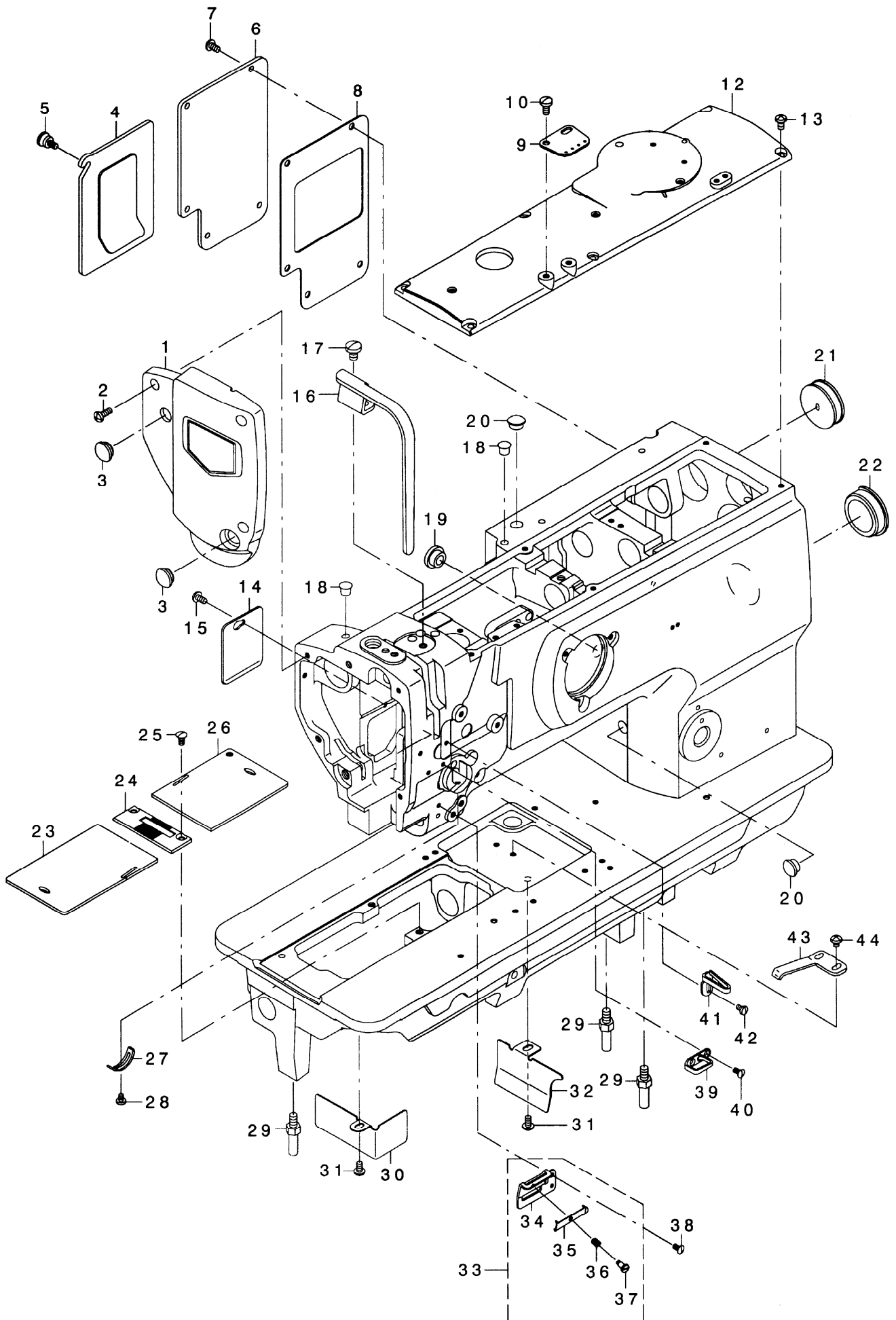
Model name 機型	CK-1508	CK-1508NH	CK-1508NH-T	CK-1508NH-FL	CK-1508NH-BT
Number of needle	1				
Application 用途	For heavy-weight materials 厚料用				
Max. sewing speed 最高縫製速度	2,000 rpm	2,500 rpm			
Max. stitch length 最大縫目	9mm (Normal / Reverse feed) 9mm(正縫 / 倒縫)				
Needle bar stroke 針棒衝程	38mm				
Lift of the presser foot 押腳提昇量	By hand: 9mm, By knee: 16mm (max.) 手動: 9mm, 膝動: 16mm (最大)				
Auto-lifter 自動抬押腳	Option 選購				
Alternating vertical movement 押腳上下交替量	2.5 ~ 6.5mm				
Thread take-up 天秤	Slide type 滑動天秤				
Hook 旋梭	Vertical-axis double-capacity hook 垂直軸兩倍旋梭				
Needle (at the time of delivery) 使用車針	Standard 190R or 13517 (Nm160) Nm125~Nm200				
Thread 線	#20~#1, B69~B207, Nm=40/3~8/3				
Locus of feed 下送料方式	Complete rectangular feed 正方形送料				
Lubrication 潤滑方式	Centralized oil wick lubrication 集中油線潤滑	Automatic 自動			
Working space 工作範圍	255mm				
Bed size 工作台尺寸	517mm X 178mm				
Automatic reverse feed function 自動抬押腳裝置	None 無			Standard 標準品	
Automatic foot lifter 自動倒縫裝置	None 無				Standard 標準品

# CONTENS 目錄

1. FRAME & MISCELLANEOUS COVER COMPONENTS .....	1
頭部、外裝機構	
2. UPPER SHAFT, LOWER SHAFT DRIVING & BALANCE COMPONENTS .....	3
上軸、下軸、天秤機構	
3. NEEDLE BAR ROCKING COMPONENTS .....	5
針棒搖動機構	
4. PRESSURE ADJUSTING & UPPER FEED MECHANISM COMPONENTS .....	7
押棒調整、上送齒機構	
5. FEED MECHANISM COMPONENTS (1/2) .....	9
送齒機構 (1/2)	
6. FEED MECHANISM COMPONENTS (2/2) .....	11
送齒機構 (2/2)	
7. HOOK SHAFT & LOWER SHAFT COMPONENTS .....	13
釜軸、下軸機構	
8. THREAD TENSION COMPONENTS .....	15
線調整器機構	
9. THREAD WINDER & THREAD GUIDE COMPONENTS.....	16
捲線器、穿線機構	
10. KNEE LIFTER COMPONENTS .....	17
提升桿機構	
11. LUBRICATION COMPONENTS .....	19
潤滑機構	
12. ACCESSORIES PARTS COMPONENTS .....	20
附屬品機構	
13. BELT COVER & OIL RESERVOIR COMPONENTS .....	21
皮帶蓋、廢油容器機構	
14. SUSPENSION SQUARE COMPONENTS (OPTIONAL PARTS) .....	22
定規機構 (選購品)	
15. NUMERICAL INDEX OF PARTS .....	23
零件索引	
16. INSTRUCTION MANUAL .....	26
操作手冊	

1. FRAME & MISCELLANEOUS COVER COMPONENTS

頭部, 外裝機構

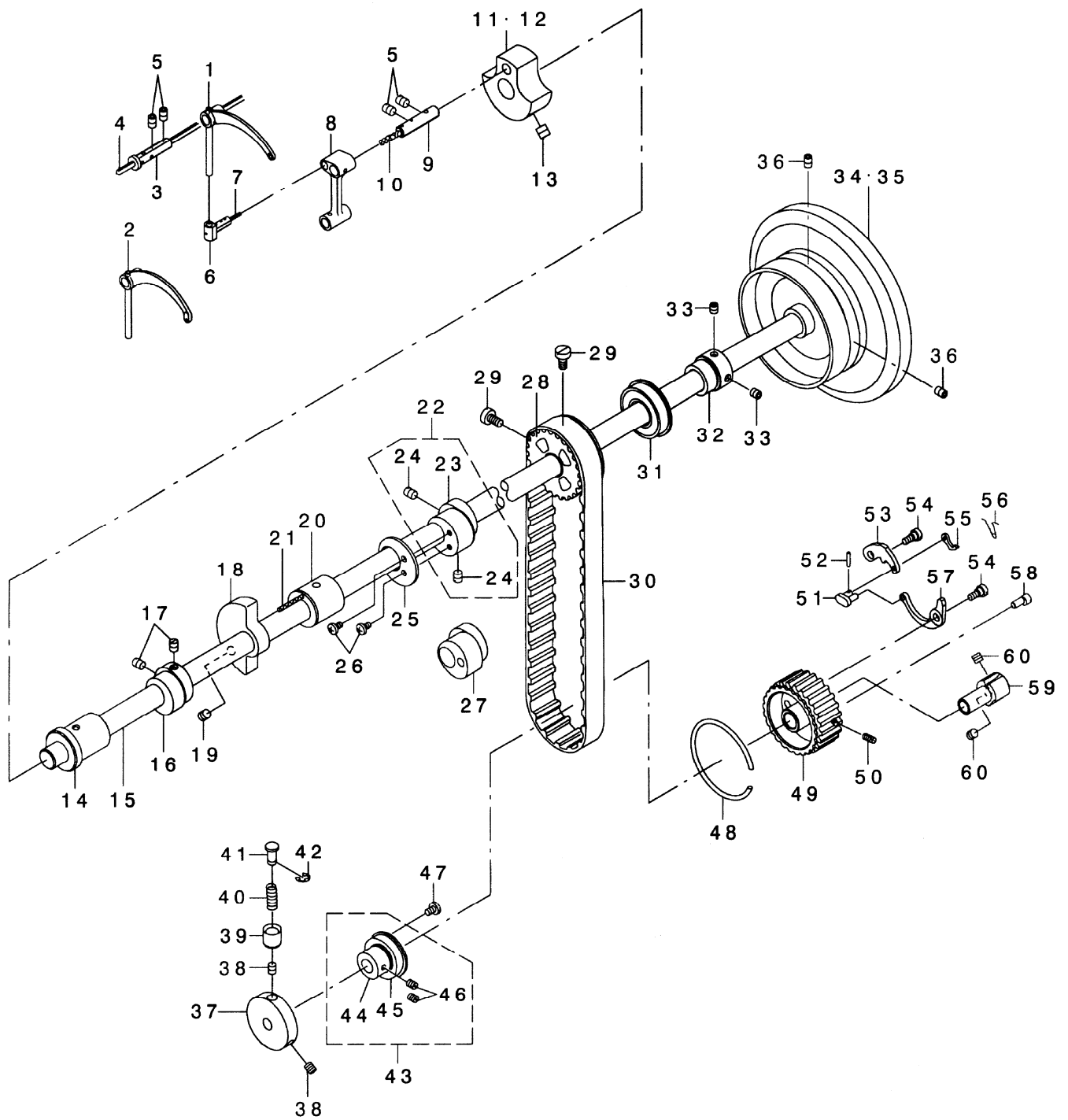


REF. NO.	NOTE	PART NO.	DESCRIPTION	名 稱	Qty
1		214-01757	FACE PLATE	面蓋	1
2		SS-4111215-SP	SCREW 11/64-40 L=12	螺絲	3
3		TA-1250406-R0	RUBBER PLUG	橡膠帽	2
4		213-31756	WINDOW PLATE A ASM.	側蓋	1
5		213-31202	SET SCREW 11/64-40	螺絲	1
6		213-31806	WINDOW PLATE B	側蓋	1
7		SS-4110815-SP	SCREW 11/64-40 L=8	螺絲	5
8		213-32002	WINDOW PLATE PACKING B	襯墊	1
9		213-55904	ARM THREAD GUIDE	導線器	1
10		SS-7621040-SP	SCREW 3/16-32 L=9.5	螺絲	2
12		213-31301	TOP COVER	頂蓋	1
13		SS-4110815-SP	SCREW 11/64-40 L=8	螺絲	6
14		213-32309	SIDE COVER	側蓋	1
15		SS-4110815-SP	SCREW 11/64-40 L=8	螺絲	1
16		213-31608	THREAD TAKE-UP LEVER COVER	天秤蓋	1
17		SS-7150910-TP	SCREW 15/64-28 L=9	螺絲	1
18		TA-0750704-R0	RUBBER PLUG	橡膠帽	2
19		TA-1250504-R0	RUBBER PLUG	橡膠帽	1
20		TA-1050504-R0	RUBBER PLUG	橡膠帽	2
21		102-01200	RUBBER PLUG	橡膠帽	1
22		226-19100	RUBBER PLUG	橡膠帽	1
23		213-49600	SLIDING PLATE (LEFT)	滑板(左)	1
24		B1109-563-000	THROAT PLATE	針板	1
25		SS-2110920-TP	SCREW 11/64-40 L=8.5	螺絲	2
26		213-49709	SLIDING PLATE (RIGHT)	滑板(右)	1
27		B3138-512-000	TAKE-UP SPRING ADJUSTING PLATE	彈簧止動器	1
28		SS-7090520-TP	SCREW 9/64-40 L=4.5	螺絲	1
29	#02	226-02601	BED SCREW STUD 15/64-28	螺絲柱	3
30		213-32200	OIL SHIELD	檔油片	1
31		SS-4110815-SP	SCREW 11/64-40 L=8	螺絲	2
32		228-77609	DUST COVER	檔油片	1
33		214-08554	THREAD GUIDE ASM.	線掛組	1
34		214-08505	THREAD GUIDE PLATE	線掛板	(1)
35		179-12106	NEEDLE THREAD PRESSER PLATE	線掛壓板	(1)
36		B1132-521-000	THREAD PRESSER PLATE SPRING	彈簧	(1)
37		SD-0380551-SL	HINGE SCREW D=3.8 H=5.5	螺絲	(1)
38		SS-2090710-TP	SCREW 9/64-40 L=7.2	螺絲	1
39		B1129-051-000	FRAME THREAD GUIDE, UPPER	線掛	1
40		SS-2090710-TP	SCREW 9/64-40 L=7.2	螺絲	2
41	#01	213-55805	THREAD GUIDE	線掛	1
42	#01	SS-5090610-SP	SCREW 9/64-40 L=6	螺絲	1
43		B1111-563-000	BED SLIDE SPRING	止動彈簧	1
44		SS-4110515-SP	SCREW 11/64-40 L=5	螺絲	2

NOTE: #01 ..... FOR CK-1508NS  
#02 ..... OPTIONAL PARTS

2. UPPER SHAFT, LOWER SHAFT DRIVING & BALANCE COMPONENTS

上軸、下軸、天秤機構

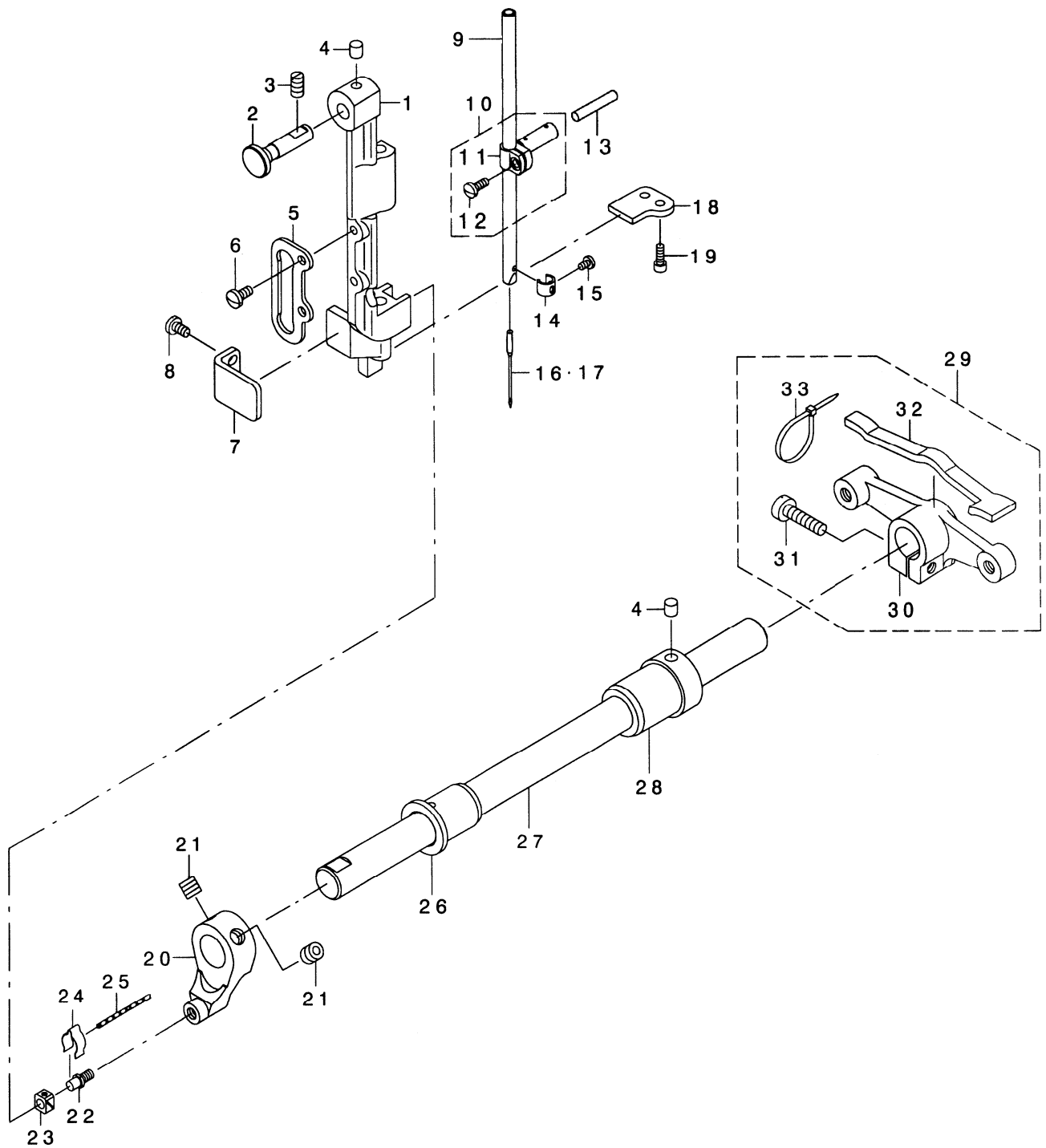


REF. NO.	NOTE	PART NO.	DESCRIPTION	名稱	Qty
1	#01	B1905-563-000	THREAD TAKE-UP LEVER ASM.	天秤	1
2	#02	B1905-241-H00	THREAD TAKE-UP LEVER	天秤	1
3		B1906-051-000	TAKE-UP LEVER PIN	天秤軸	1
4		CQ-3030000-00	OIL WICK	油線	0.45
5		SS-8151222-TP	SCREW 15/64-28 L=12	螺絲	4
6		B1907-051-000	TAKE-UP LEVER THRUST PIN	天秤滑塊	1
7		CQ-2020000-00	OIL WICK	油線	0.03
8		213-39106	NEEDLE BAR CRANK ROD	針棒曲桿	1
9		B1210-051-000	NEEDLE BAR CRANK PIN	凸輪固定銷	1
10		CQ-5050000-00	OIL WICK	油線	0.03
11	#01	213-32507	COUNTER WEIGHT (36MM)	凸輪	1
12	#02	213-32606	COUNTER WEIGHT (38MM)	凸輪	1
13		SM-8080812-TP	SCREW M8X1.25 L=8	螺絲	2
14		213-33000	UPPER SHAFT FRONT METAL	上軸套筒(前)	1
15		213-32705	UPPER SHAFT	上軸	1
16		213-39502	UPPER FEED CAM (3.5)	偏心輪	1
17		SS-8660810-TP	SCREW 1/4-40 L=8	螺絲	2
18	#01	213-33406	BALANCER	平衡器	1
19	#01	SS-8151550-SP	SCREW 15/64-28 L=15	螺絲	2
20		213-33109	UPPER SHAFT INNER METAL	上軸套筒(中)	1
21		CQ-2020000-00	OIL WICK	油線	0.15
22	#01	213-36557	ECCENTRIC CAM ASM.	偏心輪組	1
23	#01	213-36508	ECCENTRIC CAM	偏心輪	(1)
24	#01	SS-8660810-TP	SCREW 1/4-40 L=8	螺絲	(2)
25	#01	213-53008	HORIZONTAL FEED CAM COVER	偏心輪蓋	1
26	#01	SS-7110710-SP	SCREW 11/64-40 L=7	螺絲	2
27	#02	213-52505	TRIANGULAR CAM	偏心輪	1
28		226-04904	UPPER SPROCKET	上皮帶輪	1
29		SS-6661110-SP	SCREW 1/4-40 L=11	螺絲	2
30		226-04300	TIMING BELT	正時皮帶	1
31		B1203-512-000	BEARING 25X47	軸承	1
32		214-02300	UPPER SHAFT BEARING HOOK	軸承套筒	1
33		SM-8060602-TP	SCREW M6X1 L=6	螺絲	2
34	#01	213-34008	FLYWHEEL	手轉輪	1
35	#02	213-32903	FLYWHEEL	手轉輪	1
36		SS-8150822-TP	SCREW 15/64-28 L=8	螺絲	2
37		213-33703	SAFETY CLUTCH DISC	離合器按鈕	1
38		SS-8150710-TP	SCREW 15/64-28 L=7	螺絲	2
39		B1313-055-000	SAFETY CLUTCH KNOB SLEEVE	套筒	1
40		B1639-051-000	SPRING	彈簧	1
41		B1312-563-000-A	SAFETY CLUTCH PUSH BUTTON	離合器按鈕	1
42		RE-0500000-K0	E-RING (5MM)	E型環 (5mm)	1
43		226-11651	THRUST COLLAR ASM.	定環組	1
44		226-11602	THRUST COLLAR	定環	(1)
45		SB-1200002-00	BEARING 20X42	軸承	(1)
46		SS-8661030-SP	SCREW 1/4-40 L=10	螺絲	(2)
47		SS-7120760-SP	SCREW 3/16-28 L=7	螺絲	2
48		B1214-019-000	SPROCKET RING	皮帶防滑環	1
49		213-87501	LOWER SPROCKET	下皮帶輪	1
50		SS-8111010-TP	SCREW 11/64-40 L=9	螺絲	1
51		B1310-055-000	SAFETY CLUTCH SMALL LINK	連接器	1
52		B1314-055-000	SAFETY CLUTCH SMALL LINK PIN	插銷	1
53		213-87600	SAFETY CLUTCH HOOK	連桿	1
54		SD-0640322-TP	HINGE SCREW D=6.35 H=3.2 3/16-32	螺絲	2
55		B1308-055-000	SAFETY CLUTCH COUNTER-HOOK	連桿	1
56		B1309-055-000	COUNTER -HOOK SPRING	彈簧	1
57		213-87709	SAFETY CLUTCH SPRING	彈簧片	1
58		213-87907	ADJUSTING PIN (1.2)	調整銷	1
59		213-87808	SAFETY BASE	離合器固定軸	1
60		SS-8660610-TP	SCREW 1/4-40 L=6	螺絲	2

NOTE: #01 ..... FOR CK-1508NS  
#02 ..... FOR CK-1508NH

### 3. NEEDLE BAR ROCKING COMPONENTS

針棒搖動機構



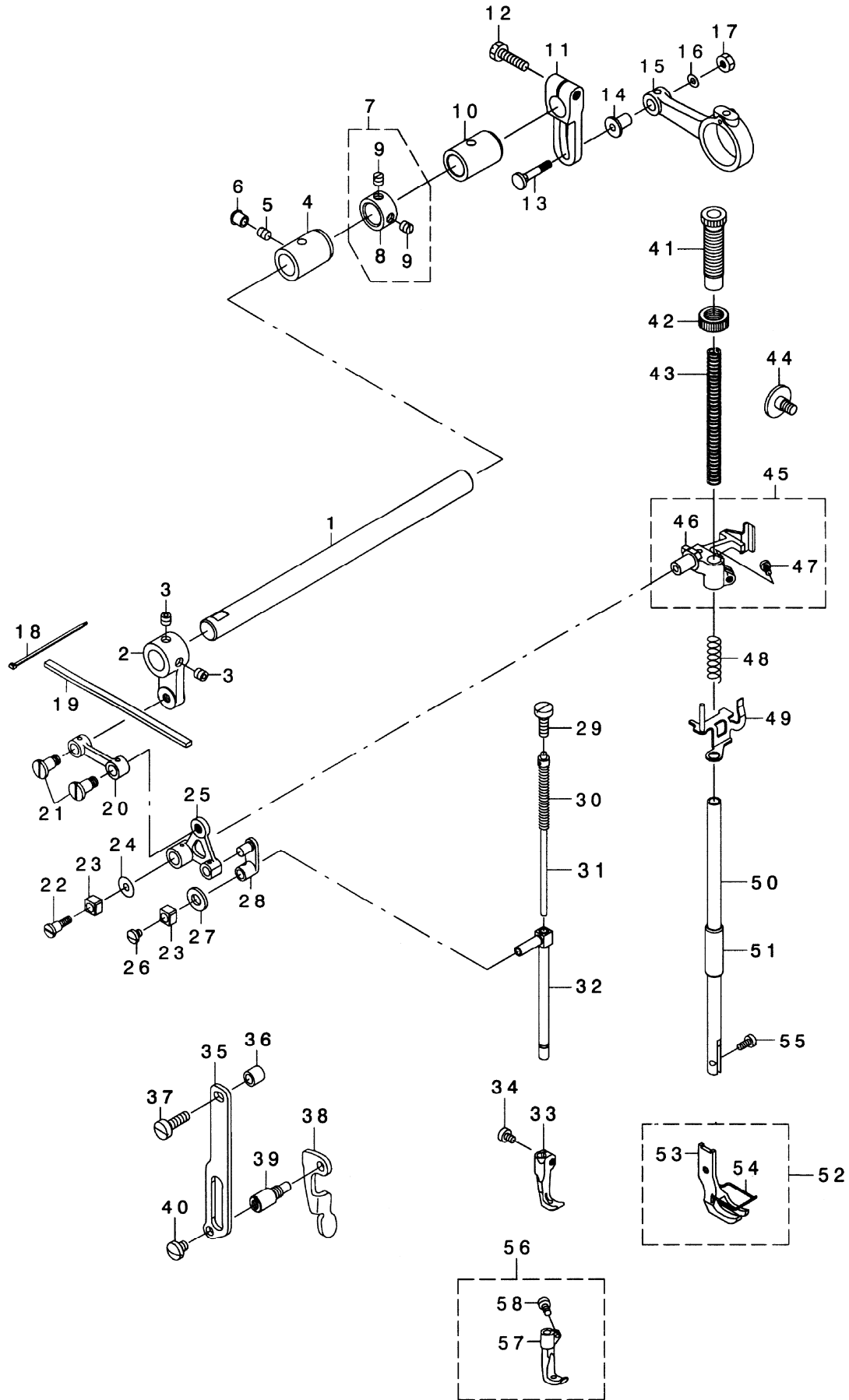


REF. NO.	NOTE	PART NO.	DESCRIPTION	名 稱	Qty
1		B1420-563-000	NEEDLE BAR FRAME	針棒座	1
2		214-05204	HINGE STUD	針棒座軸	1
3		SS-8151250-TP	SCREW 15/64-28 L=12	螺絲	1
4		228-14909	FELT	羊毛氈	2
5		B1467-563-000	UPPER FEED BAR GUIDE	固定座	1
6		SS-7110910-TP	SCREW 11/64-40 L=8	螺絲	2
7		213-88400	ROCKING BASE GUIDE	針棒座固定板	1
8		SS-7110830-SP	SCREW 11/64-40 L=7.5	一字 D=10.5 H=2	2
9		B1401-053-000	NEEDLE BAR	D=6.35 L=158	1
10		B1411-053-0A0	NEEDLE BAR CONNECTION ASM.	針棒連桿組	1
11		B1411-053-000	NEEDLE BAR CONNECTION	針棒連桿	(1)
12		SS-7090910-SP	SCREW 9/64-40 L=8.5	螺絲	(1)
13		B1412-051-000	FELT	羊毛氈	1
14		103-08609	THREAD GUARD	針棒線掛	1
15		SS-7080510-TP	SCREW 1/8-44 L=4.5	螺絲	1
16	#01	MC-3720016-00	NEEDLE SY3355 160	針	1
17	#02	MC-0190R16-00	NEEDLE 190R #160	針	1
18		213-38603	ROCKING BASE GUIDE	針棒座固定板	1
19		SS-6091022-TP	SCREW 9/64-40 L=10	螺絲	2
20		213-38801	ROCKING FRONT ARM	針棒座搖動前連桿	1
21		SM-8080802-TP	SCREW M8X1.25 L=8	螺絲	2
22		B1410-771-000	SCREW STUD D=6.35 H=7 15/64-28	螺絲柱	1
23		B1414-232-000	SQUARE BLOCK	滑塊	1
24		B1437-051-000	OIL WICK RETAINER	油線保持器	1
25		CQ-2020000-00	OIL WICK	油線	0.05
26		213-39304	ROCKING SHAFT FRONT METAL	搖動軸前套筒	1
27		213-38900	ROCKING SHAFT	搖動軸	1
28		213-39205	ROCKING SHAFT REAR METAL	搖動軸厚套筒	1
29		213-39056	ROCKING REAR ARM ASM.	針棒座搖動後連桿組	1
30		213-39007	ROCKING REAR ARM	針棒座搖動後連桿	(1)
31		SS-6152440-SP	SCREW 15/64-28 L=23.5	螺絲	(1)
32		213-47406	ROCKING REAR ARM FELT	羊毛氈	(1)
33		EA-9500B01-00	CABLE BAND	束線帶	(2)

NOTE: #01 ..... FOR CK-1508NS  
#02 ..... FOR CK-1508NH

#### 4. PRESSURE ADJUSTING & UPPER FEED MECHANISM COMPONENTS

押棒調整、上送齒機構

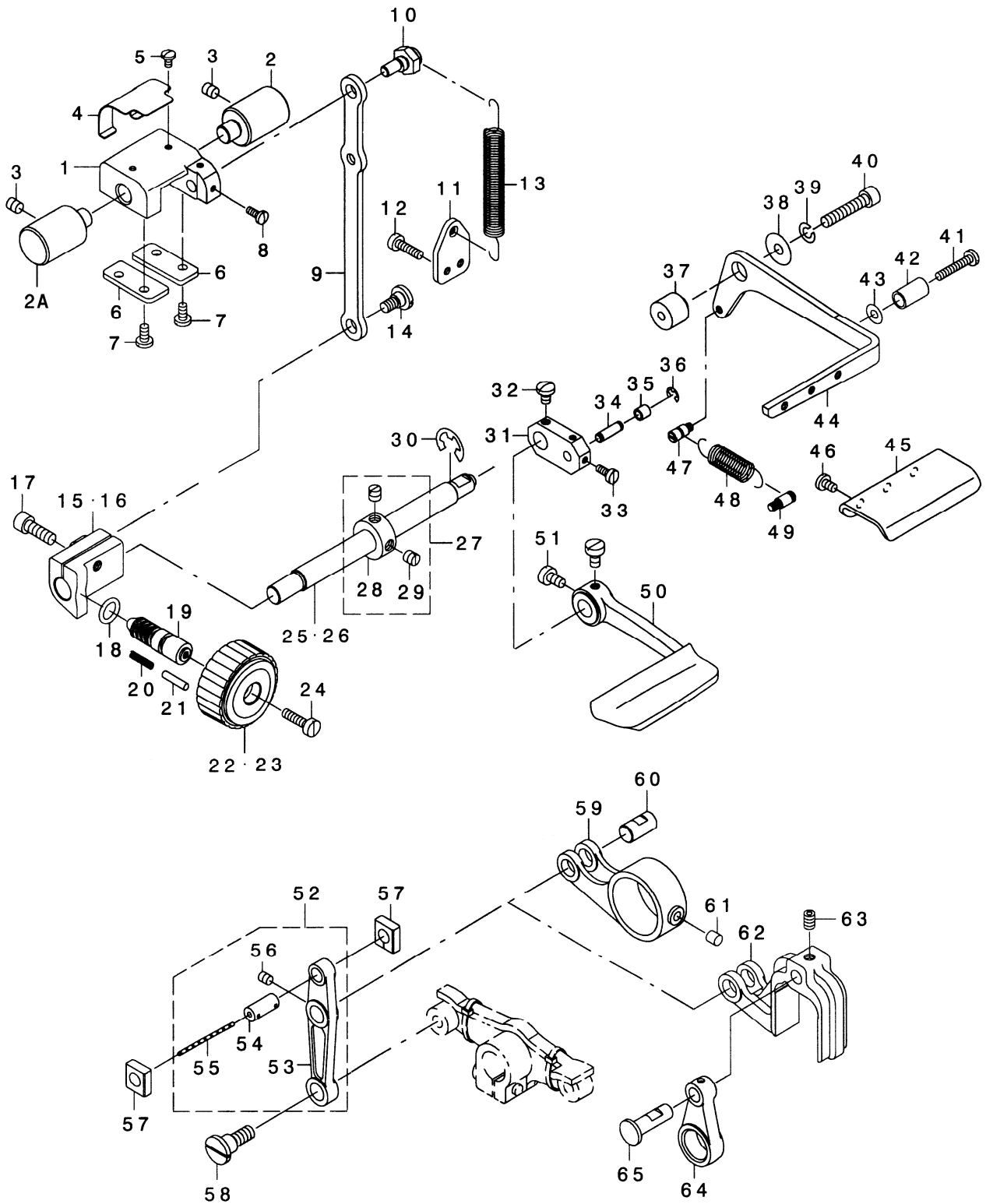


REF. NO.	NOTE	PART NO.	DESCRIPTION	名稱	Qty
1		213-40401	UPPER FEED SHAFT	驅動軸	1
2		213-40500	UPPER FEED FRONT ARM	驅動軸前連桿	1
3		SS-8660612-TP	SCREW 1/4-40 L=6	螺絲	2
4		213-41904	FRONT METAL	驅動軸前套筒	1
5		SS-8150710-SP	SCREW 15/64-28 L=7	無頭一字	1
6		TA-0750704-R0	RUBBER PLUG	橡膠帽	1
7		229-04155	THRUST COLLAR ASM.	定環組	2
8		229-04106	THRUST COLLAR	定環	(2)
9		SS-8660610-TP	SCREW 1/4-40 L=6	螺絲	(4)
10		213-78302	FEED SHAFT METAL	驅動軸後套筒	1
11		213-40203	UPPER FEED REAR ARM	驅動軸後連桿	1
12		SM-9062250-SC	SCREW M6X1 L=22	螺絲	1
13		D1456-055-B00	HINGE SCREW	螺絲	1
14		D1455-055-B00	CONNECTING STUD	螺絲套筒	1
15		213-40104	UPPER FEED ROD	連桿	1
16		D1457-055-B00	WASHER 5X14X1.6	墊圈	1
17		NS-6110530-SP	NUT 11/64-40	螺母	1
18		EA-9500B00-00	CLIP CV-70S	束線帶	2
19		213-47109	FELT 5X120X5H	羊毛氈	1
20		213-39908	UPPER FEED LINK	連桿	1
21		B3016-141-H00	HINGE SCREW D=7.5 H=9.525 1/4-40	螺絲	2
22		SD-0640701-SP	HINGE SCREW D=6.35 H=7 11/64-40	螺絲	1
23		B1414-555-000	SLIDE BLOCK	滑塊	2
24		WP-0501046-SC	WASHER 5X14X1	墊圈	1
25		213-40807	TRIANGULAR LEVER	三角形連桿	1
26		SS-7110510-SP	SCREW 11/64-40 L=8	螺絲	1
27		105-09701	FELT 9X16X3	羊毛氈	1
28		B1465-053-000	WALKING BAR DRIVING LINK	中押棒連桿	1
29		SS-6151780-SP	SCREW 15/64-28 L=17.0	螺絲	1
30		B1468-053-000	WALING BAR SPRING	中押棒加壓彈簧	1
31		B1467-053-0A0	WALKING BAR ASM. L=146	中押棒加壓桿	1
32		B1466-563-000	WALKING BAR	中押棒	1
33	#02	213-50004	UPPER FEED FOOT	內押腳	1
34	#02	B1471-241-H00	SCREW M4X0.7 L=8	螺絲	1
35		214-06509	UPPER FEED GUIDE PLATE	中押棒固定導板	1
36		135-14310	ROLLER	墊圈	1
37		SS-6151920-SP	SCREW 15/64-28 L=19.0	螺絲	1
38		214-06103	PRESSER LIFTER LEVER	手提桿	1
39		214-06608	GUIDE PLATE SPACER 5/16-24	手提桿固定軸	1
40		SS-7150740-SP	SCREW 15/64-28 L=7	螺絲	1
41		213-40906	PRESSER ADJUSTING SCREW	押棒螺絲型套筒	1
42		110-71701	NUT 1/2-28	調整螺母	1
43		B1502-246-000	PRESSER SPRING	壓縮彈簧	1
44		SD-0800481-SP	HINGE SCREW D=8 H=4.9 1/4-28	螺絲	1
45		213-41052	PRESSER BAR HOLDER ASM.	押棒固定器組	1
46		213-41003	PRESSER BAR HOLDER ASM.	押棒固定器	(1)
47		SS-7110910-TP	SCREW 11/64-40 L=8.5	螺絲	(1)
48		B1462-053-000	THREAD RELEASE SPRING	彈簧	1
49		213-41151	TRHREAD RELEASE HOLDING PLATE	沙拉組心軸推進器	1
50		B1501-241-H00	PRESSER BAR	押棒	1
51		B1510-155-000	PRESSER BAR LOWER BUSHING	押棒下套筒	1
52		B1525-241-HA0	PRESSER FOOT ASM.	外押腳組	1
53		B1525-241-H00	PRESSER FOOT	外押腳	(1)
54		103-37905	FINGER GUARD	護手環	(1)
55		SS-6090910-TP	SCREW 9/64-40 L=9	螺絲	1
56	#01	B1470-241-HA0	WALKING FOOT ASM.	內押腳組	1
57	#01	B1470-241-H00	WALKING FOOT	內押腳	(1)
58	#01	B1471-241-H00	SCREW M4X0.7 L=8	螺絲	(1)

NOTE: #01 ..... FOR CK-1508NS  
#02 ..... FOR CK-1508NH

5. FEED MECHANISM COMPONENTS (1/2)

送齒機構 (1/2)

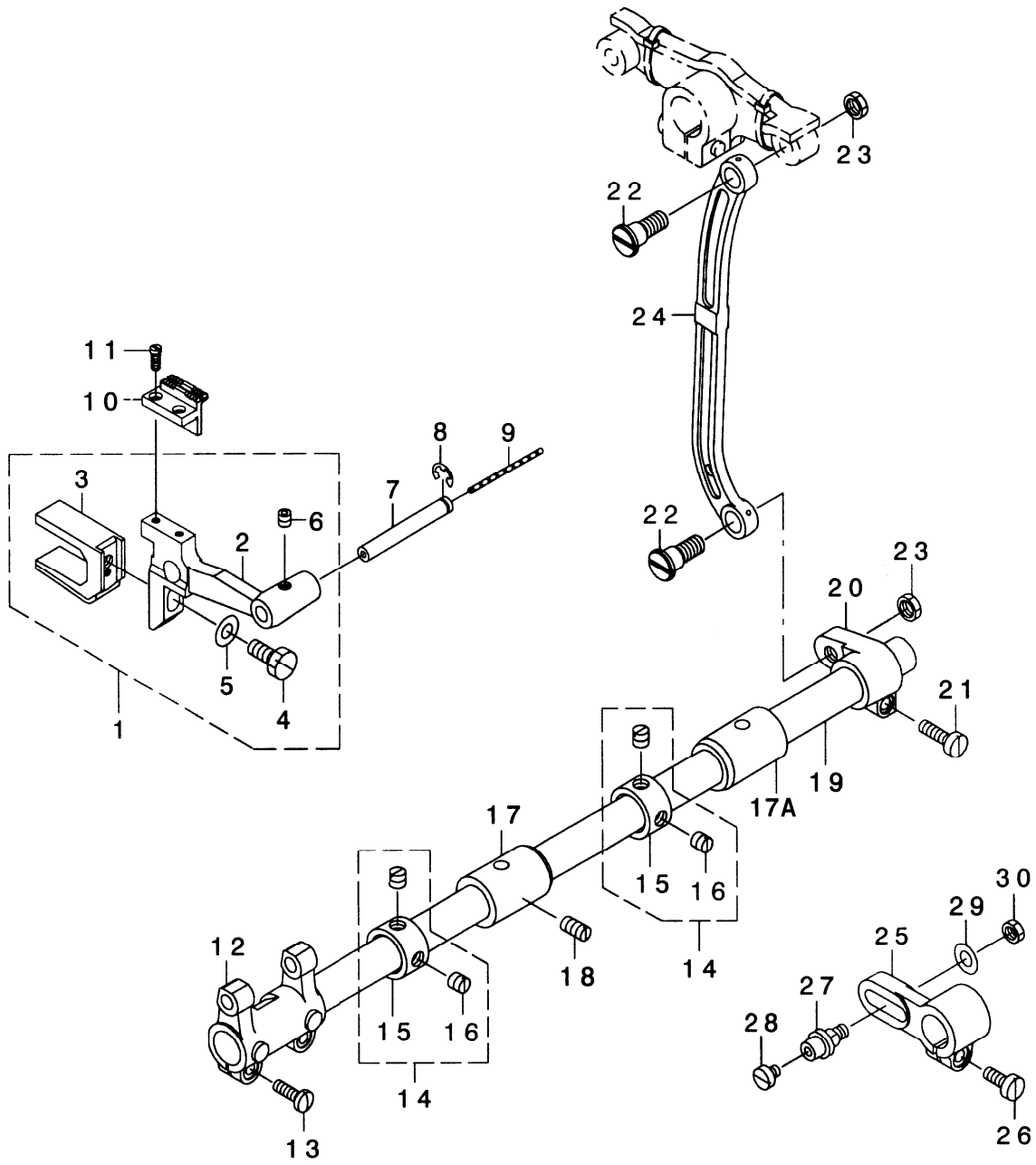


REF. NO.	NOTE	PART NO.	DESCRIPTION	名稱	Qty
1		213-37506	FEED ADJUSTING BASE	送料調節座	1
2		213-37803	FEED ADJUSTING BASE SUPPORT (FRONT)	送料調節座固定器(前)	1
2A		213-37803A	FEED ADJUSTING BASE SUPPORT (REAR)	送料調節座固定器(後)	1
3		SS-8151222-TP	SCREW 15/64-28 L=12	螺絲	2
4		213-38306	FELT SUPPORT	羊毛氈固定板	1
5		SS-7090610-SP	SCREW 9/64-40 L=6	螺絲	2
6		213-37704	FEED ADJUSTING BASE COVER	送料調節座蓋	2
7		SS-7110910-TP	SCREW 11/64-40 L=8.5	螺絲	4
8		SS-7090910-TP	SCREW 9/64-40 L=8.5	螺絲	2
9		213-37308	FEED ADJUSTING ROD	連桿	1
10		213-37902	ECCENTRIC PIN	偏心軸	1
11		213-38009	SPRING HOOK	彈簧固定板	1
12		SS-6111210-SP	SCREW 11/64-40 L=12	螺絲	2
13		213-37605	SPRING	彈簧	1
14		SD-0800402-TP	HINGE SCREW D=8 H=4 15/64-28	螺絲	1
15	#01	213-37209	FEED ADJUSTING	送料調整器	1
16	#02	213-38108	FEED ADJUSTING	送料調整器	1
17		SM-6061802-TP	SCREW M6X1 L=18	螺絲	1
18		R0-0922702-00	RUBBER RING	O型環	1
19		110-09909	FEED REGULATOR SCREW	方形牙調節螺絲	1
20		229-12109	FEED REGULATOR PIN SPRING	彈簧	1
21		110-52701	PIN	固定銷	1
22	#01	213-36805	FEED DIAL	送料轉盤	1
23	#02	213-36904	FEED DIAL	送料轉盤	1
24		SS-6121860-SP	SCREW 3/16-28 L=18	螺絲	1
25	#01	213-36300	BACKWARD FEED LEVER SHAFT	倒縫心軸	1
26	#02	213-36409	BACKWARD FEED LEVER SHAFT	倒縫心軸	1
27		CS-1201010-SH	THRUST COLLAR ASM.	定環組	1
28		CS-1201011-SH	THRUST COLLAR	定環	(1)
29		SS-8660610-TP	SCREW 1/4-40 L=6	螺絲	(2)
30		RE-0900000-K0	E-RING (9MM)	E型環(9mm)	1
31	#02	213-52802	CHANGE BASE	連接座	1
32	#02	SS-7120710-SP	SCREW 3/16-28 L=7	螺絲	2
33	#02	SS-6090910-SP	SCREW 9/64-40 L=9	螺絲	2
34	#02	D2461-481-C00	CONNECTING PIN	連接銷	1
35	#02	B2507-372-000	CAM ROLL	滾輪	1
36	#02	RE-0400000-K0	E-RING (4MM)	E型環(4mm)	1
37	#02	213-52901	BACKWARD FEED LINK FULCRUM	倒縫把手座	1
38	#02	WP-0612056-SD	WAHSER 6.1X18X2	墊圈	1
39	#02	WS-0610002-KP	SPRING WASHER	墊圈	1
40	#02	SS-6153012-TP	SCREW 15/64-28 L=30	螺絲	1
41	#02	SS-7112420-SP	SCREW 11/64-40 L=24	螺絲	1
42	#02	111-00500	REVERSE FEED LEVER STOPPER	倒縫把手止動器	1
43	#02	WP-0502616-SD	WASHER 5.1X11.4X2.6	墊圈	1
44	#02	213-37001	REVERSE FEED LEVER	倒縫把手	1
45	#02	213-37100	REVERSE FEED PRESSER PLATE	倒縫把手片	1
46	#02	SS-7110710-SP	SCREW 11/64-40 L=7	螺絲	3
47	#02	112-72614	FEED SPRING HOOK	彈簧鉤螺絲	1
48	#02	137-89201	TENSION SPRING	彈簧	1
49	#02	101-20004	SPRING SUSPENSION	彈簧鉤螺絲	1
50	#01	213-88004	REVERSE FEED CONTROL LEVER	倒縫把手	1
51	#01	SS-6120930-TP	SCREW 3/16-28 L=9	螺絲	2
52		213-36656	FEED LINK ASM.	送料連桿組	1
53		213-36607	FEED LINK	送料連桿	(1)
54		B1418-761-000	CONNECTING FORKED LINK PIN	滑塊心軸	(1)
55		CQ-2020000-00	OIL WICK	油線	(0.04)
56		SM-8050612-TP	SCREW M5X0.8 L=6	螺絲	(1)
57		213-37407	SQUARE BLOCK	滑塊	2
58		SD-1000801-SH	HINGE SCREW D=10 H=8 9/32-28	螺絲	1
59	#01	213-36706	FEED ROD	連桿	1
60		213-78906	FEED LINK PIN	連桿心軸	1
61	#01	228-14909	FELT	羊毛氈	1
62	#02	213-52604	FEED TRIANGULAR CAM ROD	連桿	1
63	#02	SS-8150522-TP	SCREW 15/64-28 L=5	螺絲	1
64	#02	100-83202	REAR CRANK	連桿保持座	1
65	#02	213-52703	FEED TRIANGULAR CAM PIN	連桿保持座心軸	1

NOTE: #01 ..... FOR CK-1508NS  
#02 ..... FOR CK-1508NH

6. FEED MECHANISM COMPONENTS (2/2)

送齒機構 (2/2)

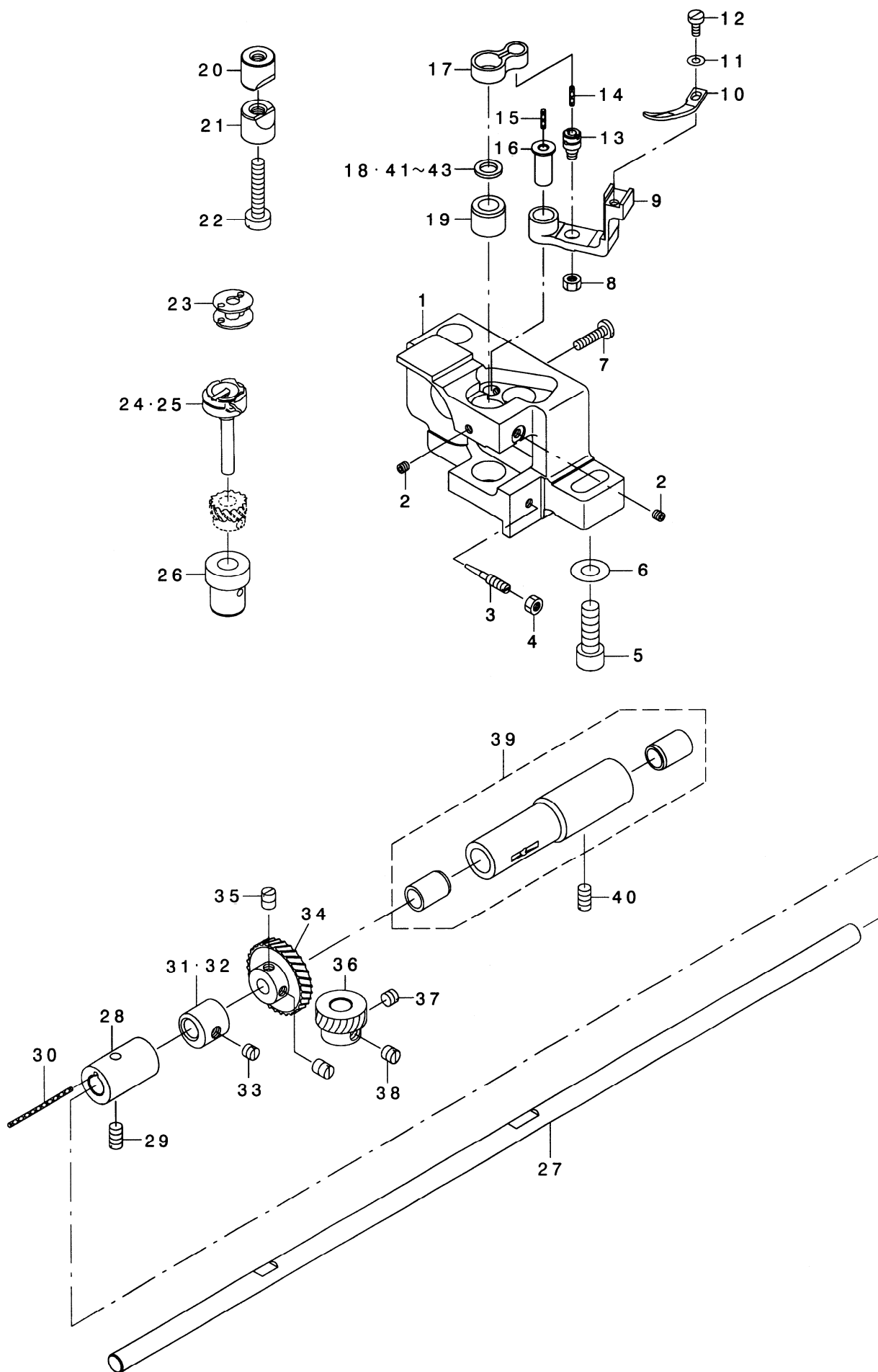


REF. NO.	NOTE	PART NO.	DESCRIPTION	名 稱	Qty
1		213-36052	FEED BASE ASM.	狗齒擺動組	1
2		213-36003	FEED BASE	狗齒座	(1)
3		B1604-051-000	FEED BAR SLIDE FROK	偏心輪連接器	(1)
4		SS-9151440-CP	SCREW 15/64-28 L=14	螺絲	(1)
5		WP-0621016-SD	WASHER 6.2X13X1	墊圈	(1)
6		SM-8050502-TP	SCREW M5X0.8 L=4	螺絲	(1)
7		B1604-012-000-A	FEED BAR SHAFT	心軸	1
8		RE-0500000-K0	E-RING (5MM)	E型環(5MM)	1
9		CQ-2020000-00	OIL WICK	油線	0.14
10		213-49303	FEED DOG (2.5X7.25)	狗齒	1
11		B1611-055-000	SCREW 1/8-40 L=9	螺絲	2
12		213-64104	FEED ROCKER	狗齒擺動連桿	1
13		SS-7111410-SP	SCREW 11/64-40 L=14	螺絲	2
14		229-04155	MAIN SHAFT THRUST COLLAR ASM.	定環組	2
15		229-04106	MAIN SHAFT THRUST COLLAR	定環	(1)
16		SS-8660610-TP	SCREW 1/4-40 L=6	螺絲	(2)
17		213-78302	FEED RCOK SHAFT METAL (FRONT)	下送料軸套筒(前)	1
17A		213-78302A	FEED RCOK SHAFT METAL (REAR)	下送料軸套筒(後)	1
18		SS-8151150-TP	SCREW 15/64-28 L=10.5	螺絲	1
19		226-09408	FEED ROCK SHAFT	下送料軸	1
20		226-09309	FEED ROCKER SHAFT CRANK	連接器	1
21		SS-6121610-SP	SCREW 3/16-28 L=16	螺絲	1
22		SD-0900701-TP	HINGE SCREW D=9 H=7 9/32-28	螺絲	2
23		NS-6680320-SP	NUT 9/32-28	螺母	2
24		102-05201	NEEDLE BAR FRAME ROD	連桿	1
25	#01	B3025-141-H00-A	CONNECTING ARM	連接器	1
26	#01	SS-6121210-TP	SCREW 3/16-28 L=12	螺絲	1
27	#01	101-22000	CONNECTING PIN	連接器螺絲柱	1
28	#01	SS-6110520-TP	SCREW 11/64-40 L=4.5	螺絲	1
29	#01	WP-0650876-SD	WASHER 6.5X13X0.8	墊圈	1
30	#01	NS-6150310-SP	NUT 15/64-28	螺母	1

NOTE: #01 ..... OPTIONAL PARTS

# 7. HOOK SHAFT & LOWER SHAFT COMPONENTS

釜軸、下軸機構



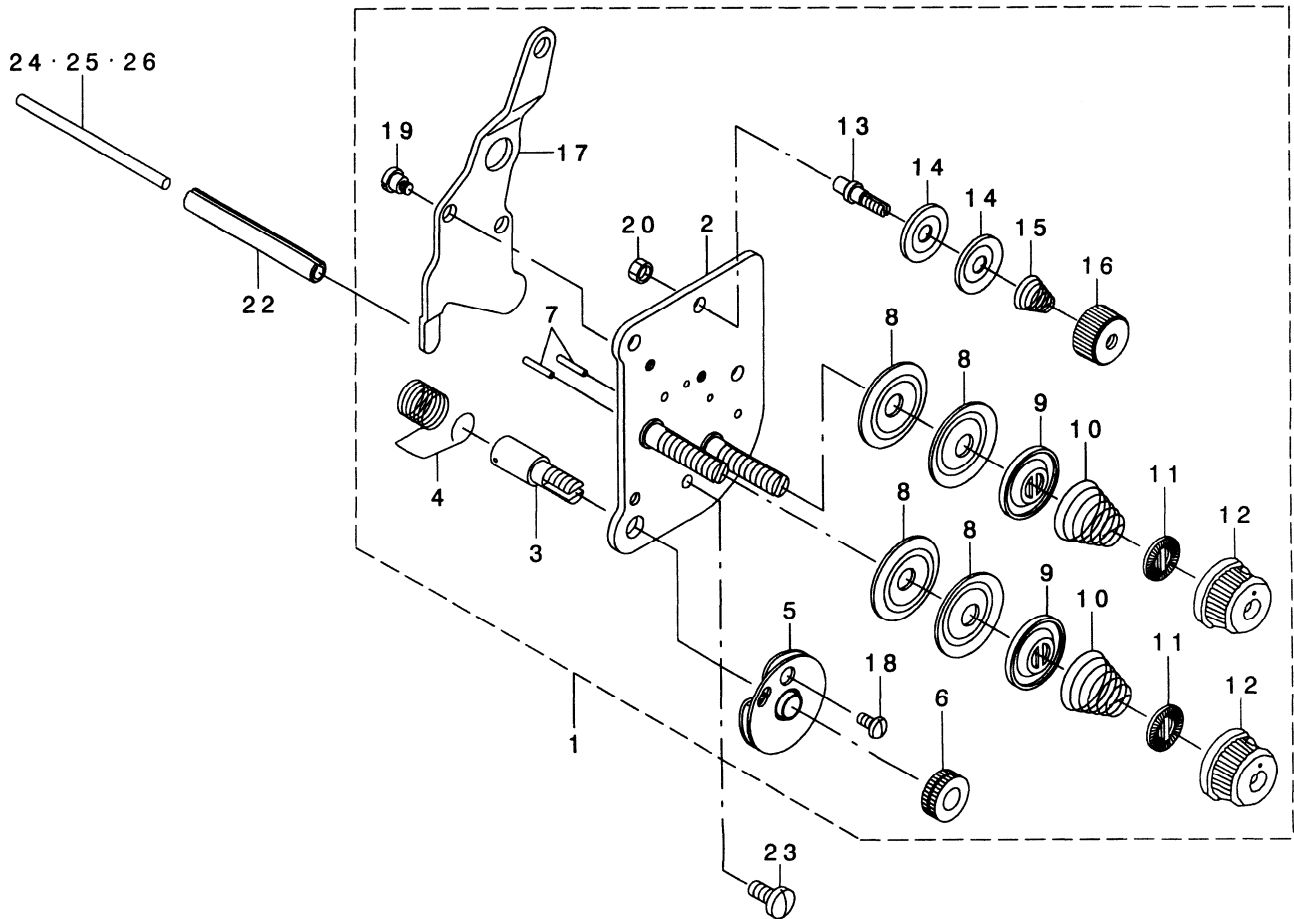


REF. NO.	NOTE	PART NO.	DESCRIPTION	名 稱	Qty
1		213-35005	HOOK SHAFT BASE (RIGHT)	旋梭座	1
2		SS-8110422-TP	SCREW 11/64-40 L=4	螺絲	2
3		B1843-563-000	OIL ADJUSTING SCREW	油量調節螺絲	1
4		NS-6110420-SP	NUT 11/64-40	螺母	1
5		SM-6082502-TP	SCREW M8X1.25 L=25	螺絲	1
6		WP-0850002-SP	WASHER 8.5X18X1.6	墊圈	1
7		SS-7111810-SP	SCREW 11/64-40 L=18	螺絲	1
8		NS-6110420-SP	NUT 11/64-40	螺母	1
9		B1822-563-000	BOBBIN CASE OPENING LEVER CRAN	曲柄	1
10		B1824-563-000	BOBBIN CASE OPENING LEVER	開啟桿	1
11		WP-0371016-SD	WASHER 3.7X8X1	墊圈	1
12		SS-6090810-SP	SCREW 9/64-40 L=7.5	螺絲	1
13		B1821-051-000	CRANK SCREW STUD	連桿螺絲	1
14		CQ-2020000-00	OIL WICK	油線	0.01
15		CQ-2020000-00	OIL WICK	油線	0.01
16		B1823-051-000	OPENING LEVER CRANK PIN	曲柄銷	1
17		B1820-563-000	BOBBIN CASE OPENING LEVER LINK	連桿	1
18	#03	101-11102	THRUST WASHER 1.3	墊圈1.3	1
19		213-78500	HOOK SHAFT UPPER METAL	旋梭軸上套筒	1
20		101-09908	SADDLE INSTALLING BLOCK, UPPER	固定銷,上	1
21		101-12407	SADDLE INSTALLING BLOCK, LOWER	固定銷,下	1
22		SS-6153040-SP	SCREW 15/64-40 L=30	螺絲	1
23		B9117-563-000	BOBBIN	梭仔	1
24	#01	B1830-563-0A0	VERTICAL-AXIS SEWING HOOK ASM.	旋梭	1
25	#02	B1830-563-BA0	HOOK ASM., FOR EXTREME THICK	旋梭(厚料用)	1
26		213-34701	HOOK SHAFT LOWER METAL	旋梭軸下套筒	1
27		213-33604	LOWER SHAFT	下心軸	1
28		B1802-563-000-A	HOOK DRIVING SHAFT FRONT METAL	下心軸前套筒	1
29		SS-8150550-TP	SCREW 15/64-28 L=5	螺絲	1
30		CQ-2020000-00	OIL WICK	油線	0.04
31		B1840-051-000	FEED DRIVING ECCENTRIC 1.6	偏心輪	1
32	#04	B1840-051-00A	VERTICAL FEED CAM	偏心輪	1
33		SS-8150510-TP	SCREW 15/64-28 L=5	螺絲	1
34		B1816-051-000	HOOK DRIVING SHAFT GEAR, LARGE	齒輪,大	1
35		SS-8660810-TP	SCREW 1/4-40 L=8	螺絲	2
36		B1817-051-000	HOOK DRIVING SHAFT GEAR, SMALL	齒輪,小	1
37		SS-8660530-TP	SCREW 1/4-40 L=4.5	螺絲	1
38		SS-8660670-SP	SCREW 1/4-40 L=6	螺絲	1
39		B1803-515-0A0	BUSHING ASM., INTERMEDIATE	下心軸中套筒	1
40		SS-8150950-TP	SCREW 15/64-28 L=9	螺絲	1
41	#03	101-10906	THRUST WASHER 1.1	墊圈1.1	1
42	#03	101-11003	THRUST WASHER 1.2	墊圈1.2	1
43	#03	101-11201	THRUST WASHER 1.4	墊圈1.4	1

NOTE: #01 ..... FOR CK-1508NS  
#02 ..... FOR CK-1508NH  
#03 ..... SELECTIVE PARTS  
#04 ..... OPTIONAL PARTS

# 8. THREAD TENSION COMPONENTS

## 線調整器機構

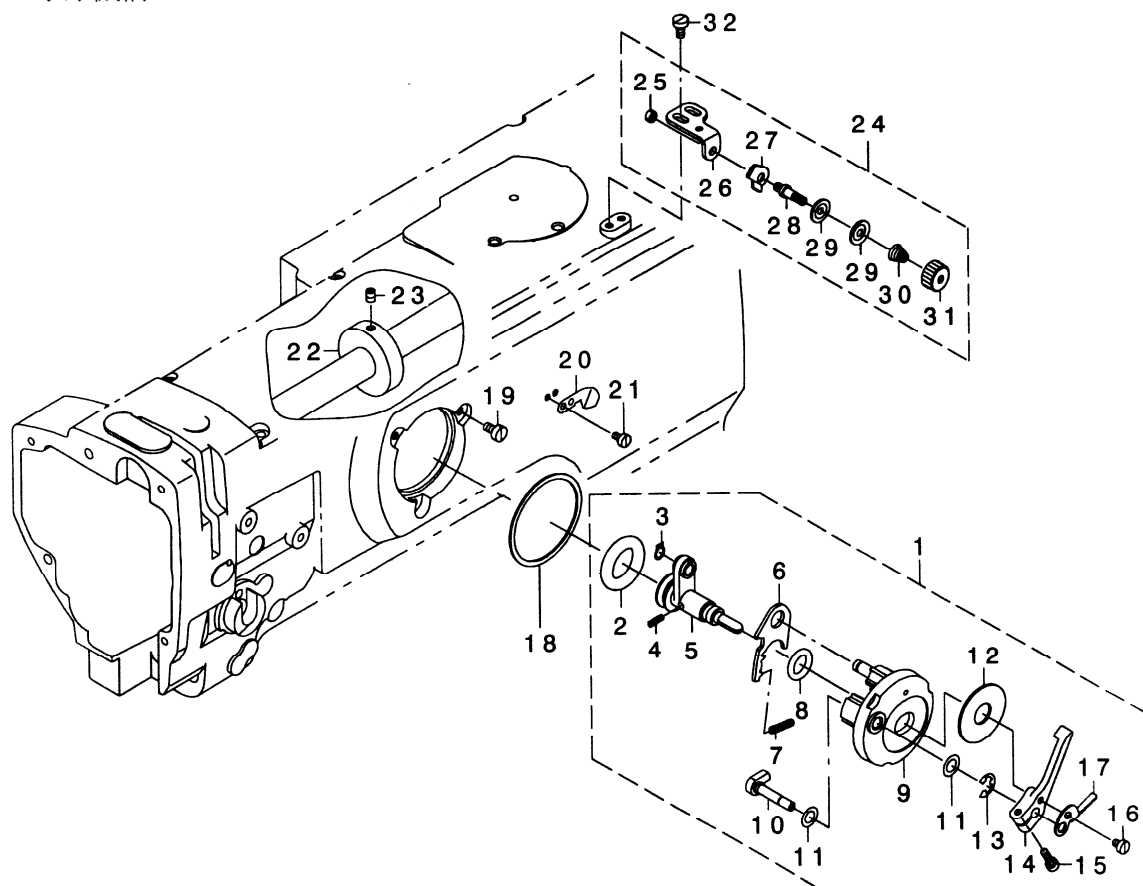


REF. NO.	NOTE	PART NO.	DESCRIPTION	名稱	Qty
1		214-41068	THREAD TENSION ASM.	沙拉組	1
2		214-41050	TENSION POST COMPL.	沙拉組座	(1)
3		103-20109	SCREW STUD	螺絲柱	(1)
4		B3128-520-000	TENSION SPRING	挑線彈簧	(1)
5		B3137-051-0A0	TAKE-UP SPRING GUIDE DISC ASM.	挑線彈簧調節盤	(1)
6		B3125-012-000	THREAD TENSION NUT	螺母	(1)
7		226-18201	TENSION RELEASE PIN	沙拉片鬆開銷	(2)
8		B3126-012-000	THREAD TENSION DISK	沙拉片	(4)
9		226-17906	THREAD TENSION DISK PRESSER	沙拉片壓力板	(2)
10		B3129-526-000	TENSION SPRING (1.2)	彈簧	(2)
11		B3120-125-000	ROTATING STOPPER	止動片	(2)
12		119-56802	THREAD TENSION KNOB, BLUE	螺帽,藍色	(1)
12A		119-56802A	THREAD TENSION KNOB, RED	螺帽,紅色	(1)
14		107-41106	FIRST THREAD TENSION PLATE	沙拉片	(2)
15		110-45101	THREAD TENSION SPRING	彈簧	(1)
16		110-72402	THREAD TENSION NUT	螺帽	(1)
17		214-41100	TENSION RELEASE PLATE	沙拉片鬆開片	(1)
18		SS-4080610-SP	SCREW M2.6X0.45 L=7	螺絲	(1)
19		SD-0470281-SP	HINGE SCREW D=4.7 H=2.8	螺絲	(2)
20		NS-6110310-SP	NUT 11/64-40	螺母	(1)
22		PS-0600502-KP	SPRING PIN 6X50	彈簧銷	1
23		SS-7110910-TP	SCREW 11/64-40 L=8.5	螺絲	2
24		213-48206	TENSION RELEASE BAR	沙拉組心	1
25	#01	103-21107	TENSION RELEASE BAR	沙拉組心	1
26	#01	230-06406	TENSION RELEASE BAR	沙拉組心	1

NOTE: #01 ..... SELECTIVE PARTS

## 9. THREAD WINDER & THREAD GUIDE COMPONENTS

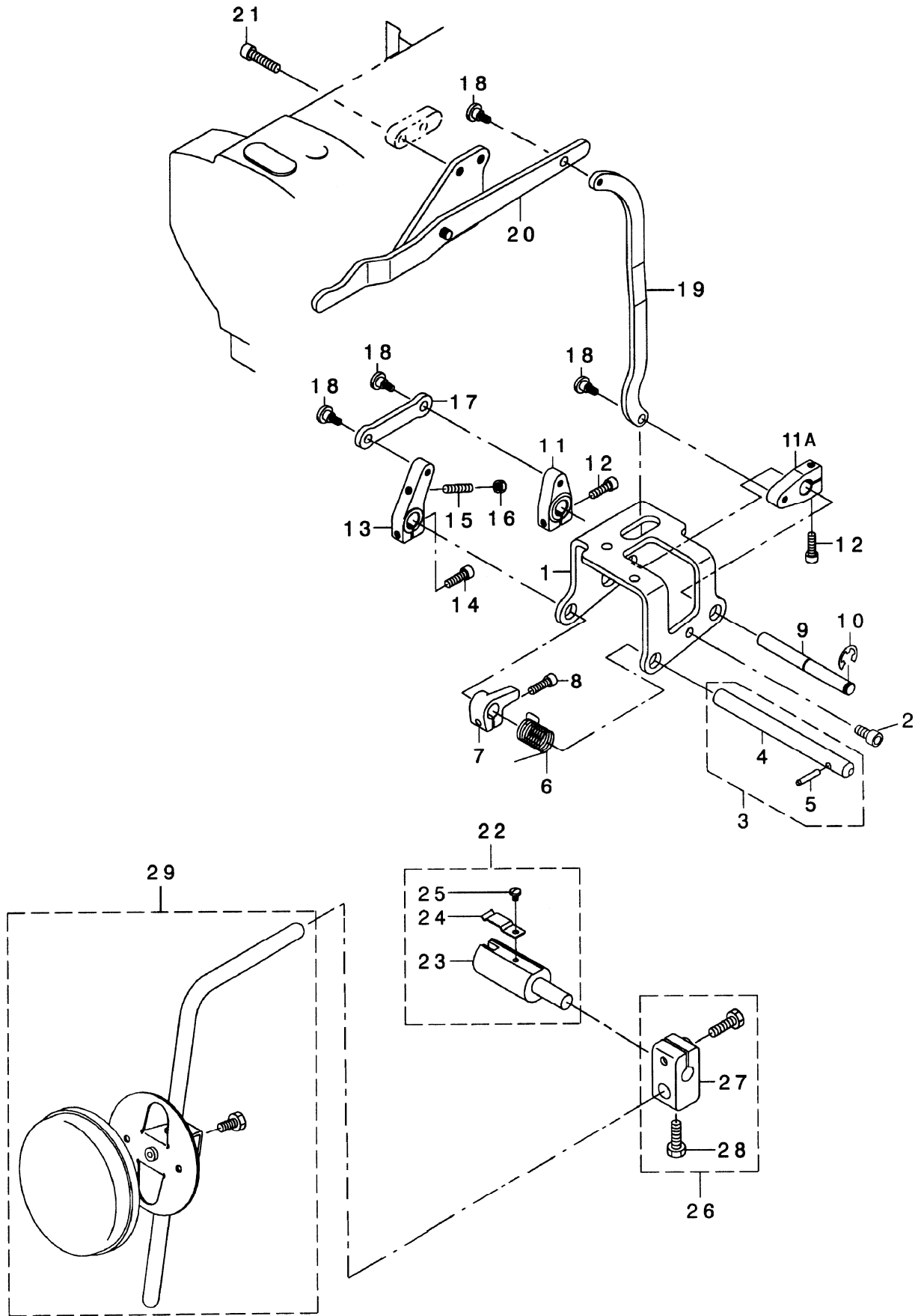
捲線器、穿線機構



REF. NO.	NOTE	PART NO.	DESCRIPTION	名稱	Qty
1		213-57967	BOBBIN DEVICE ASM.	梭仔捲線器組	1
2		A3216-001-00A	RUBBER RING	O型環	(1)
3		RE-0500000-K0	E-RING (5MM)	E型環(5MM)	(1)
4		B1148-555-000	SPRING	彈簧	(1)
5		213-57959	BOBBIN SHAFT COMPL.	梭仔捲線軸	(1)
6		225-38409	ADJUSTING PLATE	捲線壓力板	(1)
7		B1529-890-00C-A	SPRING	彈簧	(1)
8		R0-0922702-00	RUBBER RING	O型環	(1)
9		225-37658	BOBBIN FITTING BASIS COMPL.	捲線器座板	(1)
10		225-38151	BOBBIN CAM SHAFT COMPL.	捲線軸組	(1)
11		106-18304	VERTICAL ROLLER WASHER	墊圈	(2)
12		B3205-210-000	CUSHION	塑膠片	(1)
13		RE-0500000-K0	E-RING (5MM)	E型環(5MM)	(1)
14		236-36202	BOBBIN LEVER	壓力板	(1)
15		SS-7091410-SP	SCREW 9/64-40 L=14	螺絲	(1)
16		SS-6090520-SP	SCREW 9/64-40 L=5	螺絲	(1)
17		145-12503	BOBBIN ADJUSTING PLATE	調節板	(1)
18		225-38706	PACKING	油封	1
19		SS-6110810-TP	SCREW 11/64-40 L=8	螺絲	3
20		105-02300	THREAD CUTTER	切線片	1
21		SS-6090620-TP	SCREW 9/64-40 L=6	螺絲	2
22		107-04807	BOBBIN FRICTION WHEEL	摩擦輪	1
23		SM-8050602-TP	SCREW M5X0.8 L=6	螺絲	2
24		213-55755	LOWER THREAD GUIDE ASM.	導線器組	1
25		NS-6110310-SP	NUT 11/64-40	螺母	(1)
26		213-55706	FITTING BASE	導線器座板	(1)
27		D3162-555-B00	THREAD GUIDE	固定片	(1)
28		213-78708	THREAD TENSION POST	螺絲柱	(1)
29		B3214-047-000	BOBBIN WINDER TENSION DISC	沙拉片	(2)
30		D3168-555-H0B	TENSION SPRING	彈簧	(1)
31		110-72402	THREAD TENSION NUT	螺帽	(1)
32		SM-6040800-SP	SCREW M4X0.7 L=8	螺絲	2

10. KNEE LIFTER COMPONENTS

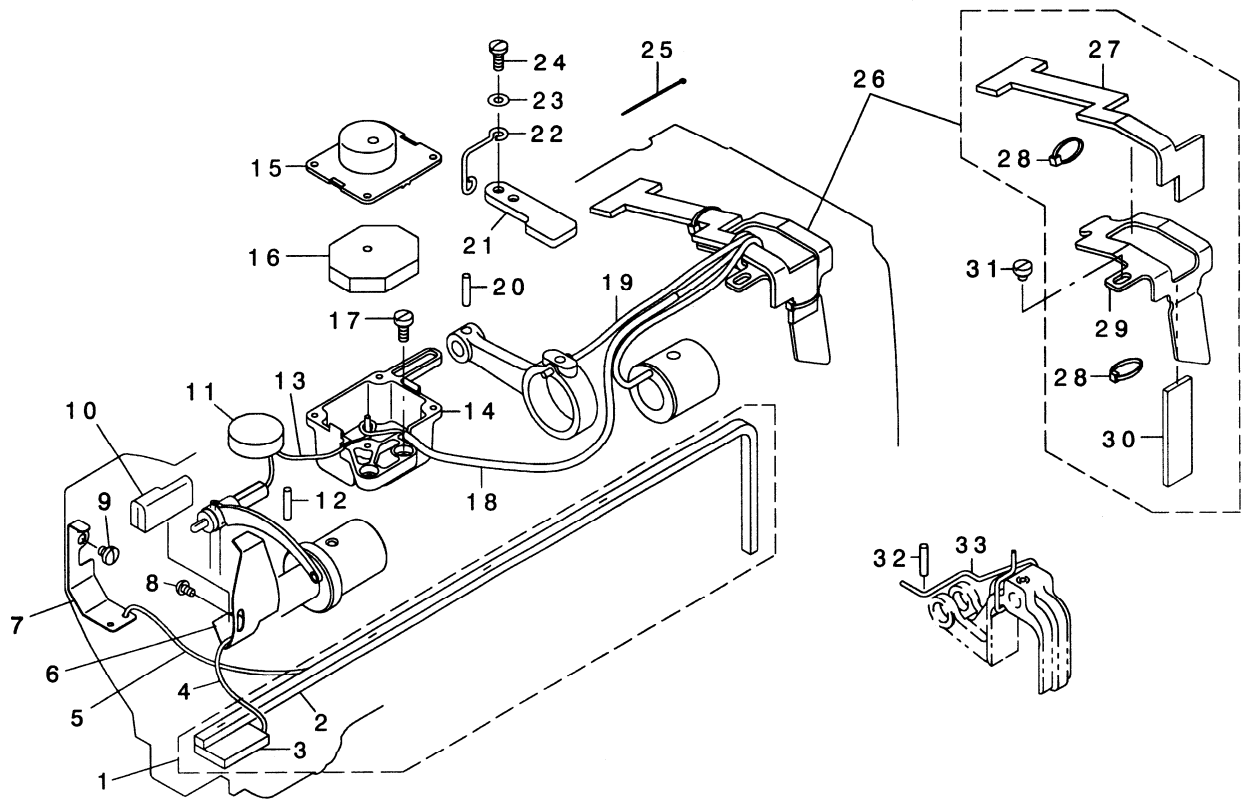
提昇桿機構



REF. NO.	NOTE	PART NO.	DESCRIPTION	名 稱	Qty
1		213-43207	KNEE LIFTER SHAFT BASIS	提昇桿心軸座	1
2		SM-6061202-TP	SCREW M6X1 L=12	螺絲	3
3		213-42555	KNEE LIFTER SHAFT ASM.	提昇桿心軸組	1
4		213-42506	KNEE LIFTER SHAFT	提昇桿心軸	(1)
5		213-42605	KNEE LIFTER SHAFT PIN	插銷	(1)
6		213-43702	KNEE LIFTER SHAFT SPRING	彈簧	1
7		213-43801	KNEE LIFTER SPRING RACK	彈簧止動器	1
8		SM-6051602-TP	SCREW M5X0.8 L=16	螺絲	1
9		213-42704	KNEE LIFTER SHAFT BASIS	提昇桿心軸	1
10		RE-0800000-K0	E-RING (8MM)	E型環(8MM)	1
11		213-43009	KNEE LIFTER LEVER	連桿	1
11A		213-43009A	KNEE LIFTER LEVER	連桿	1
12		SM-6051602-TP	SCREW M5X0.8 L=16	螺絲	2
13		213-42803	KNEE LIFTER LEVER	連桿	1
14		SM-6051602-TP	SCREW M5X0.8 L=16	螺絲	1
15		SM-8052502-TP	SCREW M5X0.8 L=25	螺絲	1
16		NM-6050001-SD	NUT M5X0.8	螺母	1
17		213-42902	KNEE LIFTER LINK	連接桿	1
18		SD-0700451-TP	HINGE SCREW D=7 H=4.5 11/64-40	螺絲	4
19		213-43405	KNEE LIFTER CONNECTING PLATE	提昇桿連接器	1
20		213-43355	KNEE LIFTER LEVER ASM.	提昇桿組	1
21		SM-6062502-TP	SCREW M6X1 L=25	螺絲	2
22		228-63252	KNEE LIFTER JOINT ASM.	連接器組	1
23		228-63203	KNEE LIFTER JOINT	連接器	(1)
24		B3428-521-000	PRESSER SPRING	彈簧片	(1)
25		SS-7090510-SP	SCREW 9/64-40 L=4.5	螺絲	(1)
26		229-32453	BRACKET ASM.	腳弓連接器組	1
27		229-32404	BRACKET	腳弓連接器	(1)
28		229-34707	SCREW M6X1 L=24	螺絲	(2)
29		213-43157	KNEE PRESS PLATE ASM.	腳弓	1

# 11. LUBRICATION COMPONENTS

## 潤滑機構

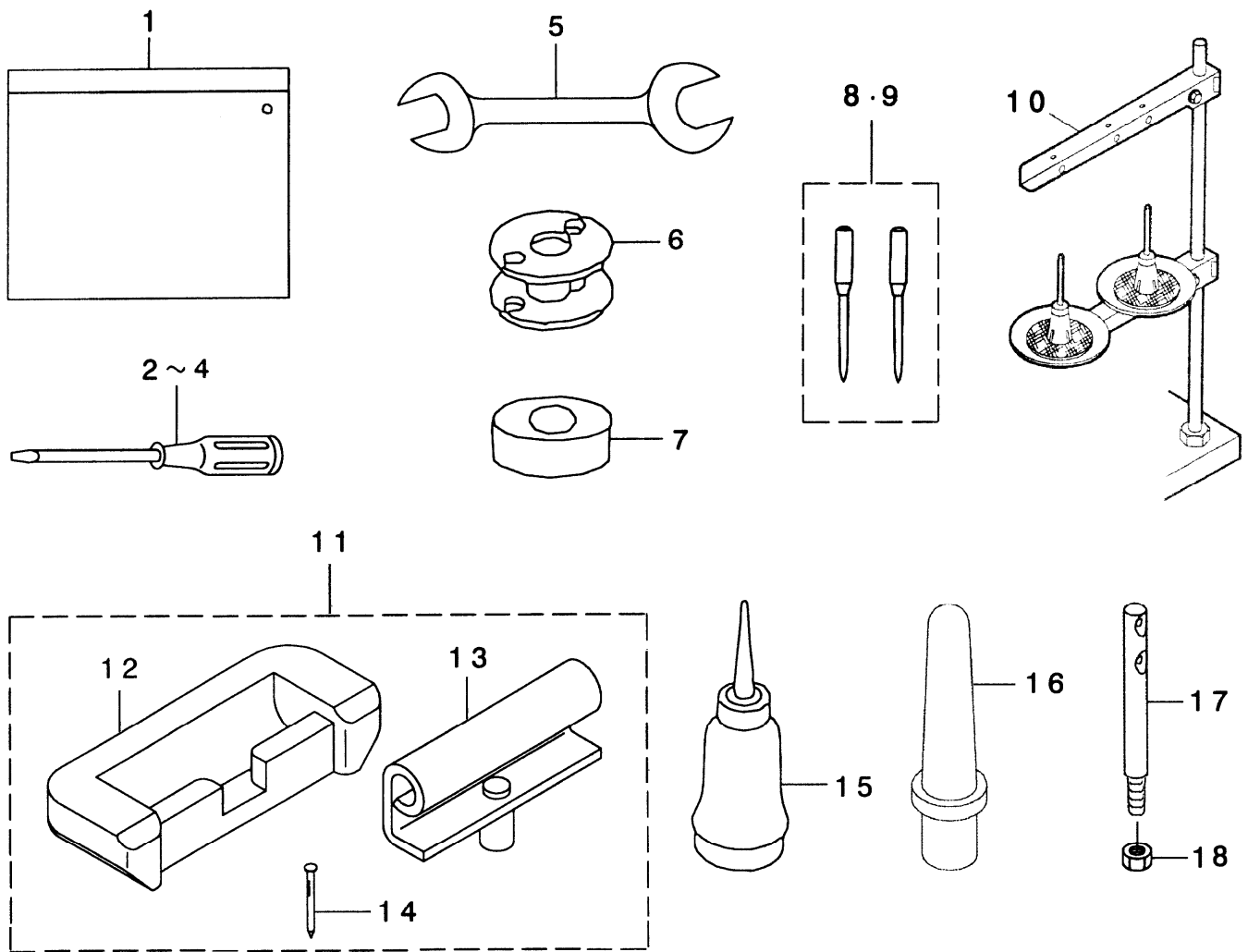


REF. NO.	NOTE	PART NO.	DESCRIPTION	名稱	Qty
1		213-45756	ARM ONCE THROUGH OIL FELT ASM.	羊毛氈組	1
2		213-45806	FELT	羊毛氈	(1)
3		213-45905	FACE ONCE THROUGH FELT	羊毛氈	(1)
4		CQ-2020000-00	OIL WICK	油線	0.2
5		CQ-2020000-00	OIL WICK	油線	0.2
6		B1140-051-000	TAKE-UP OIL SPLASHER	擋油片	1
7		213-40708	UPPER FEED OIL BAR PLATE	油線固定片	1
8		SS-3090610-SP	SCREW 9/64-40 L=6	螺絲	1
9		SS-7110510-SP	SCREW 11/64-40 L=5	螺絲	1
10		213-47208	TAKE-UP LUBRICATION FELT	羊毛氈	1
11		213-46002	FELT	羊毛氈	1
12		B1412-051-000	FELT	羊毛氈	1
13		CQ-2520000-00	OIL WICK	油線	0.3
14		214-07606	OIL TANK	油槽	1
15		214-07507	OIL TANK COVER	油槽蓋	1
16		214-07705	FELT	羊毛氈	1
17		SS-6111010-SP	SCREW 11/64-40 L=9.5	螺絲	2
18		BT-0500300-EA	OIL TUBE	油管	0.25
19		CQ-2020000-00	OIL WICK	油線	0.2
20		PS-0500202-KP	SPRING PIN 5X20	彈簧銷	1
21		213-39700	UPPER FEED STOPPER PLATE	止動座	1
22		226-20504	OIL WICK HOLDER	油線支撐器	1
23		WP-0450801-SD	WASHER 4.5X10X0.8	墊圈	1
24		SS-7110820-TP	SCREW 11/64-40 L=8	螺絲	2
25		EA-9500B00-00	CLIP CV-75	束線帶	1
26		213-46358	FELT SUPPORT ASM.	羊毛氈固定座組	1
27		213-46507	FEED CHANGE FELT	羊毛氈	(1)
28		EA-9500B00-00	CLIP CV-75	束線帶	(2)
29		213-46309	FELT SUPPORT	羊毛氈固定座	(1)
30		213-46408	FELT	羊毛氈	(1)
31		SS-6110480-SP	SCREW 11/64-40 L=4.3	螺絲	1
32	#01	B1412-051-000	FELT	羊毛氈	1
33	#01	CQ-2020000-00	OIL WICK	油線	0.2

NOTE: #01 ..... FOR CK-1508NH

12. ACCESSORIES PARTS COMPONENTS

附屬品機構

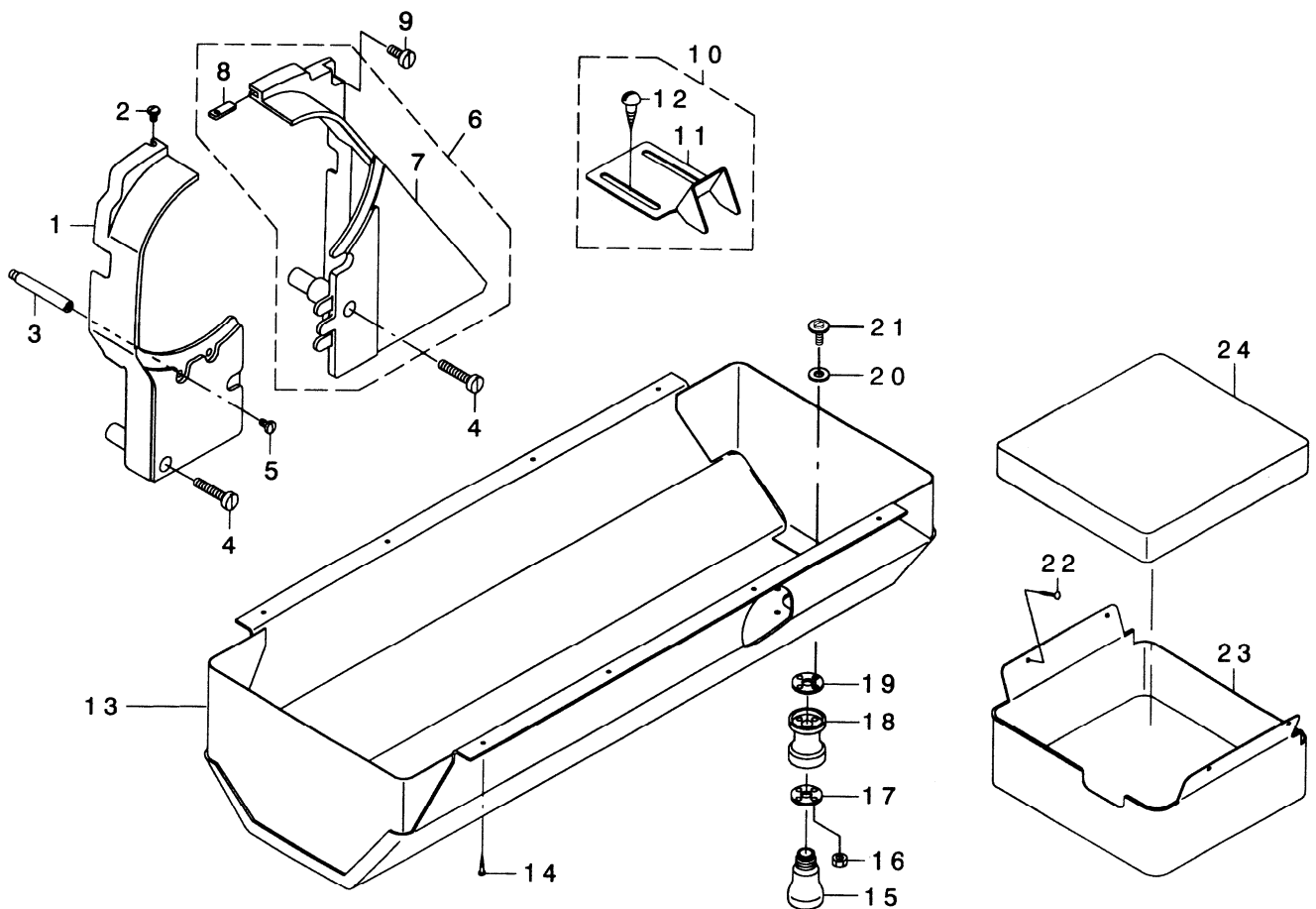


REF. NO.	NOTE	PART NO.	DESCRIPTION	名 稱	Qty
1		B9101-552-000	ACCESSORY BAG	零件盒	1
2		B9111-012-000	SCREW DRIVER, SMALL	螺絲起子,小	1
3		B9110-012000	SCREW DRIVER, MIDDLE	螺絲起子,中	1
4		229-33006	SCREW DRIVER, LARGE	螺絲起子,大	1
5		B9113-012-000	WRENCH (9X10)	六角扳手	1
6		B9117-563-000	BOBBIN	梭仔	1
7		B8209-012-000	RUBBER CUSHION	防震橡膠墊	4
8	#01	MC-3720016-02	NEEDLE SY3355 #160-2	針	1
9	#02	MC-0190R16-02	NEEDLE 190R #160-2	針	1
10		229-30358	THREAD STAND ASM.	線架	1
11		214-13257	RUBBER HINGE ASM.	後鈕扣組	1
12		110-75801	RUBBER SPACER	後鈕座	(2)
13		B8213-125-AA0	HINGE ASM.	後鈕扣	(2)
14		B8210-012-000	CUSHION SET NAIL	鐵釘	(4)
15		B9121-012-0A0	OILER ASM.	油壺	1
16		110-73103	SUPPORTING BLOCK	枕木	1
17		229-58300	NEEDLE THREAD GUIDE PIN	線柱	1
18		NS-6620310-SP	NUT 3/16-32	螺母	1

NOTE: #01 ..... FOR CK-1508NS  
 #02 ..... FOR CK-1508NH

### 13. BELT COVER & OIL RESERVOIR COMPONENTS

皮帶蓋、廢油容器機構

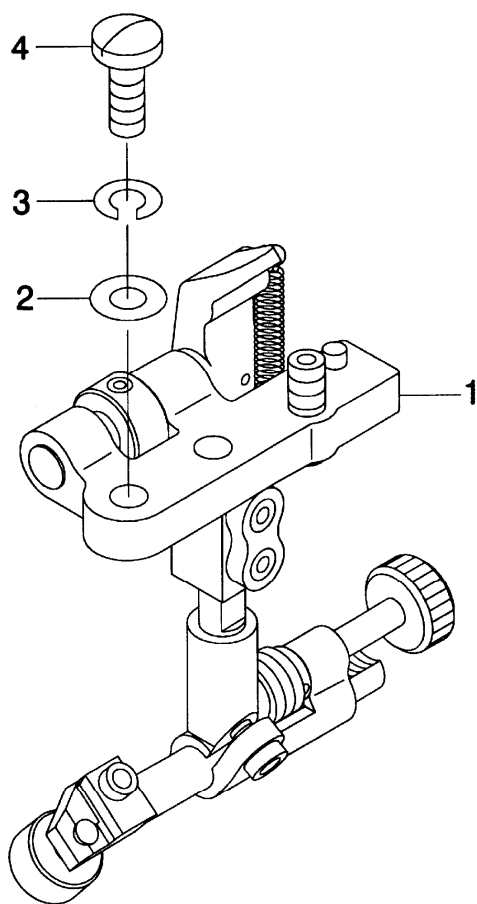


REF. NO.	NOTE	PART NO.	DESCRIPTION	名稱	Qty
1		213-51200	BELT COVER (LEFT)	皮帶蓋(左)	1
2		SS-5110740-TP	SCREW 11/64-40 L=6.5	螺絲	1
3		D8232-241-E00	BELT COVER SUPPORT	螺絲柱	1
4		SS-6153040-SP	SCREW 15/64-28 L=30	螺絲	2
5		SS-7110840-SP	SCREW 11/64-40 L=7.8	螺絲	1
6		213-51150	BELT COVER ASM. (RIGHT)	皮帶蓋組(右)	1
7		213-51101	BELT COVER(RIGHT)	皮帶蓋(右)	(1)
8		213-51002	BELT COVER AUXILIARY PLATE	固定片	(1)
9		SS-6151440-SP	SCREW 15/64-28 L=14	螺絲	1
10		107-55254	BELT COVER ASM.	皮帶蓋輔助板組	1
11		107-55205	BELT COVER	皮帶蓋輔助板	(1)
12		SK-3482500-SC	WOOD SCREW D=4.8 L=25	木螺絲	(2)
13		213-51457	OIL RESERVOIR ASM.	油槽	1
14		SK-3241601-SC	WOOD SCREW D=2.4 L=16	木螺絲	8
15		B9121-012-000	OIL CAN	廢油槽	1
16		NM-6030001-SC	NUT M3X0.5	螺母	4
17		213-79003	OIL MANAGEMENT WASHER	墊片	1
18		B8202-205-000	OIL MANAGEMENT	盛油柱	1
19		B8112-220-000	OIL SEAL	油封	1
20		107-48101	OIL REMOVING SETSCREW PACKING	墊片	4
21		SM-3031401-SE	SCREW M3X0.5 L=14	螺絲	4
22		B8210-012-000	CUSHION SET NAIL	鐵釘	4
23		B1839-563-000	OIL RECEIVING COVER	油槽	1
24		B1841-563-000	OIL DRIP FELT	油棉	1



#### 14. SUSPENSION SQUARE COMPONENTS (OPTIONAL PARTS)

定規機構 (選購品)



REF. NO.	NOTE	PART NO.	DESCRIPTION	名 稱	Qty
1		MAH-152010A0	RULER	定規	1
2		WP-0621016-SD	WASHER 6.2X13X1	墊圈	2
3		WS-0610002-KN	SPRING WASHER 6.1X12.2X1.5	彈簧墊圈	2
4		SS-7151610-SP	SCREW 15/64-28 L=16	螺絲	2

## 19. NUMERICAL INDEX OF PARTS

## 零件索引

Part No.	Item No.	Ref. No.	Part No.	Item No.	Ref. No.	Part No.	Item No.	Ref. No.	Part No.	Item No.	Ref. No.
100-83202	5	64	213-31806	1	6	213-39106	2	8	213-49709	1	26
101-09908	7	20	213-32002	1	8	213-39205	3	28			
101-10906	7	41	213-32200	1	30	213-39304	3	26	213-50004	4	33
101-11003	7	42	213-32309	1	14	213-39502	2	16	213-51002	13	8
101-11102	7	18	213-32507	2	11	213-39700	11	21	213-51101	13	7
101-11201	7	43	213-32606	2	12	213-39908	4	20	213-51150	13	6
101-12407	7	21	213-32705	2	15				213-51200	13	1
101-20004	5	49	213-32903	2	35	213-40104	4	15	213-51457	13	13
101-22000	6	27	213-33000	2	14	213-40203	4	11	213-52505	2	27
102-01200	1	21	213-33109	2	20	213-40401	4	1	213-52604	5	62
102-05201	6	24	213-33406	2	18	213-40500	4	2	213-52703	5	65
103-08609	3	14	213-33604	7	27	213-40708	11	7	213-52802	5	31
103-20109	8	3	213-33703	2	37	213-40807	4	25	213-52901	5	37
103-21107	8	25	213-34008	2	34	213-40906	4	41	213-53008	2	25
103-37905	4	54	213-34701	7	26	213-41003	4	46	213-55706	9	26
105-02300	9	20	213-35005	7	1	213-41052	4	45	213-55755	9	24
105-09701	4	27	213-36003	6	2	213-41151	4	49	213-55805	1	41
106-18304	9	11	213-36052	6	1	213-41904	4	4	213-55904	1	9
107-04807	9	22	213-36300	5	25	213-42506	10	4	213-57959	9	5
107-41106	8	14	213-36409	5	26	213-42555	10	3	213-57967	9	1
107-48101	13	20	213-36508	2	23	213-42605	10	5			
107-55205	13	11	213-36557	2	22	213-42704	10	9	213-64104	6	12
107-55254	13	10	213-36607	5	53	213-42803	10	13			
			213-36656	5	52	213-42902	10	17	213-78302	4	10
110-09909	5	19	213-36706	5	59	213-43009	10	11	213-78302	6	17
110-45101	8	15	213-36805	5	22	213-43009A	10	11A	213-78302A	6	17A
110-52701	5	21	213-36904	5	23	213-43157	10	29	213-78500	7	19
110-71701	4	42	213-37001	5	44	213-43207	10	1	213-78708	9	28
110-72402	8	16	213-37100	5	45	213-43355	10	20	213-78906	5	60
110-72402	9	31	213-37209	5	15	213-43405	10	19	213-79003	13	17
110-73103	12	16	213-37308	5	9	213-43702	10	6			
110-75801	12	12	213-37407	5	57	213-43801	10	7	213-87501	2	49
111-00500	5	42	213-37506	5	1	213-45756	11	1	213-87600	2	53
112-72614	5	47	213-37605	5	13	213-45806	11	2	213-87709	2	57
119-56802	8	12	213-37704	5	6	213-45905	11	3	213-87808	2	59
119-56802A	8	12A	213-37803	5	2	213-46002	11	11	213-87907	2	58
			213-37803A	5	2A	213-46309	11	29	213-88004	5	50
135-14310	4	36	213-37902	5	10	213-46358	11	26	213-88400	3	7
137-89201	5	48	213-38009	5	11	213-46408	11	30			
145-12503	9	17	213-38108	5	16	213-46507	11	27	214-01757	1	1
179-12106	1	35	213-38306	5	4	213-47109	4	19	214-02300	2	32
			213-38603	3	18	213-47208	11	10	214-05204	3	2
213-31202	1	5	213-38801	3	20	213-47406	3	32	214-06103	4	38
213-31301	1	12	213-38900	3	27	213-48206	8	24	214-06509	4	35
213-31608	1	16	213-39007	3	30	213-49303	6	10	214-06608	4	39
213-31756	1	4	213-39056	3	29	213-49600	1	23	214-07507	11	15

## 19. NUMERICAL INDEX OF PARTS

## 零件索引

Part No.	Item No.	Ref. No.	Part No.	Item No.	Ref. No.	Part No.	Item No.	Ref. No.	Part No.	Item No.	Ref. No.
214-07606	11	14	B1109-563-000	1	24	B1639-051-000	2	40	B9111-012-000	12	2
214-07705	11	16	B1111-563-000	1	43	B1802-563-000-A	7	28	B9113-012-000	12	5
214-08505	1	34	B1129-051-000	1	39	B1803-515-0A0	7	39	B9117-563-000	7	23
214-08554	1	33	B1132-521-000	1	36	B1816-051-000	7	34	B9117-563-000	12	6
214-13257	12	11	B1140-051-000	11	6	B1817-051-000	7	36	B9121-012-000	13	15
214-41050	8	2	B1148-555-000	9	4	B1820-563-000	7	17	B9121-012-0A0	12	15
214-41068	8	1	B1203-512-000	2	31	B1821-051-000	7	13			
214-41100	8	17	B1210-051-000	2	9	B1822-563-000	7	9	BT-0500300-EA	11	18
			B1214-019-000	2	48	B1823-051-000	7	16			
225-37658	9	9	B1308-055-000	2	55	B1824-563-000	7	10	CQ-2020000-00	2	7
225-38151	9	10	B1309-055-000	2	56	B1830-563-0A0	7	24	CQ-2020000-00	2	21
225-38409	9	6	B1310-055-000	2	51	B1830-563-BA0	7	25	CQ-2020000-00	3	25
225-38706	9	18	B1312-563-000-A	2	41	B1839-563-000	13	23	CQ-2020000-00	5	55
226-02601	1	29	B1313-055-000	2	39	B1840-051-000	7	31	CQ-2020000-00	6	9
226-04300	2	30	B1314-055-000	2	52	B1840-051-00A	7	32	CQ-2020000-00	7	14
226-04904	2	28	B1401-053-000	3	9	B1841-563-000	13	24	CQ-2020000-00	7	15
226-09309	6	20	B1410-771-000	3	22	B1843-563-000	7	3	CQ-2020000-00	7	30
226-09408	6	19	B1411-053-000	3	11	B1905-241-H00	2	2	CQ-2020000-00	11	4
226-11602	2	44	B1411-053-0A0	3	10	B1905-563-000	2	1	CQ-2020000-00	11	5
226-11651	2	43	B1412-051-000	3	13	B1906-051-000	2	3	CQ-2020000-00	11	19
226-17906	8	9	B1412-051-000	11	12	B1907-051-000	2	6	CQ-2020000-00	11	33
226-18201	8	7	B1412-051-000	11	32				CQ-2520000-00	11	13
226-19100	1	22	B1414-232-000	3	23	B2507-372-000	5	35	CQ-3030000-00	2	4
226-20504	11	22	B1414-555-000	4	23				CQ-5050000-00	2	10
228-14909	3	4	B1418-761-000	5	54	B3016-141-H00	4	21			
228-14909	5	61	B1420-563-000	3	1	B3025-141-H00-A	6	25	CS-1201010-SH	5	27
228-63203	10	23	B1437-051-000	3	24	B3120-125-000	8	11	CS-1201011-SH	5	28
228-63252	10	22	B1462-053-000	4	48	B3125-012-000	8	6			
228-77609	1	32	B1465-053-000	4	28	B3126-012-000	8	8	D1455-055-B00	4	14
229-04106	4	8	B1466-563-000	4	32	B3128-520-000	8	4	D1456-055-B00	4	13
229-04106	6	15	B1467-053-0A0	4	31	B3129-526-000	8	10	D1457-055-B00	4	16
229-04155	4	7	B1467-563-000	3	5	B3137-051-0A0	8	5	D2461-481-C00	5	34
229-04155	6	14	B1468-053-000	4	30	B3138-512-000	1	27	D3162-555-B00	9	27
229-12109	5	20	B1470-241-H00	4	57	B3205-210-000	9	12	D3168-555-H0B	9	30
229-30358	12	10	B1470-241-HA0	4	56	B3214-047-000	9	29	D8232-241-E00	13	3
229-32404	10	27	B1471-241-H00	4	34	B3428-521-000	10	24			
229-32453	10	26	B1471-241-H00	4	58				EA-9500B00-00	4	18
229-33006	12	4	B1501-241-H00	4	50	B8112-220-000	13	19	EA-9500B00-00	11	25
229-34707	10	28	B1502-246-000	4	43	B8202-205-000	13	18	EA-9500B00-00	11	28
229-58300	12	17	B1510-155-000	4	51	B8209-012-000	12	7	EA-9500B01-00	3	33
			B1525-241-H00	4	53	B8210-012-000	12	14			
230-06406	8	26	B1525-241-HA0	4	52	B8210-012-000	13	22	MAH-152010A0	14	1
236-36202	9	14	B1529-890-00C-A	9	7	B8213-125-AA0	12	13			
			B1604-012-000-A	6	7				MC-0190R16-00	3	17
A3216-001-00A	9	2	B1604-051-000	6	3	B9101-552-000	12	1	MC-0190R16-02	12	9
			B1611-055-000	6	11	B9110-012000	12	3	MC-3720016-00	3	16

## 19. NUMERICAL INDEX OF PARTS

## 零件索引

Part No.	Item No.	Ref. No.	Part No.	Item No.	Ref. No.	Part No.	Item No.	Ref. No.	Part No.	Item No.	Ref. No.
MC-3720016-02	12	8	SM-6051602-TP	10	12	SS-6121860-SP	5	24	SS-8150950-TP	7	40
			SM-6051602-TP	10	14	SS-6151440-SP	13	9	SS-8151150-TP	6	18
NM-6030001-SC	13	16	SM-6061202-TP	10	2	SS-6151780-SP	4	29	SS-8151222-TP	2	5
NM-6050001-SD	10	16	SM-6061802-TP	5	17	SS-6151920-SP	4	37	SS-8151222-TP	5	3
			SM-6062502-TP	10	21	SS-6152440-SP	3	31	SS-8151250-TP	3	3
NS-6110310-SP	8	20	SM-6082502-TP	7	5	SS-6153012-TP	5	40	SS-8151550-SP	2	19
NS-6110310-SP	9	25	SM-8050502-TP	6	6	SS-6153040-SP	7	22	SS-8660530-TP	7	37
NS-6110420-SP	7	4	SM-8050602-TP	9	23	SS-6153040-SP	13	4	SS-8660610-TP	2	60
NS-6110420-SP	7	8	SM-8050612-TP	5	56	SS-6661110-SP	2	29	SS-8660610-TP	4	9
NS-6110530-SP	4	17	SM-8052502-TP	10	15				SS-8660610-TP	5	29
NS-6150310-SP	6	30	SM-8060602-TP	2	33	SS-7080510-TP	3	15	SS-8660610-TP	6	16
NS-6620310-SP	12	18	SM-8080802-TP	3	21	SS-7090510-SP	10	25	SS-8660612-TP	4	3
NS-6680320-SP	6	23	SM-8080812-TP	2	13	SS-7090520-TP	1	28	SS-8660670-SP	7	38
			SM-9062250-SC	4	12	SS-7090610-SP	5	5	SS-8660810-TP	2	17
PS-0500202-KP	11	20				SS-7090910-SP	3	12	SS-8660810-TP	2	24
PS-0600502-KP	8	22	SS-2090710-TP	1	38	SS-7090910-TP	5	8	SS-8660810-TP	7	35
			SS-2090710-TP	1	40	SS-7091410-SP	9	15	SS-8661030-SP	2	46
R0-0922702-00	5	18	SS-2110920-TP	1	25	SS-7110510-SP	4	26			
R0-0922702-00	9	8				SS-7110510-SP	11	9	SS-9151440-CP	6	4
			SS-3090610-SP	11	8	SS-7110710-SP	2	26			
RE-0400000-K0	5	36				SS-7110710-SP	5	46	TA-0750704-R0	1	18
RE-0500000-K0	2	42	SS-4080610-SP	8	18	SS-7110820-TP	11	24	TA-0750704-R0	4	6
RE-0500000-K0	6	8	SS-4110515-SP	1	44	SS-7110830-SP	3	8	TA-1050504-R0	1	20
RE-0500000-K0	9	3	SS-4110815-SP	1	7	SS-7110840-SP	13	5	TA-1250406-R0	1	3
RE-0500000-K0	9	13	SS-4110815-SP	1	13	SS-7110910-TP	3	6	TA-1250504-R0	1	19
RE-0800000-K0	10	10	SS-4110815-SP	1	15	SS-7110910-TP	4	47			
RE-0900000-K0	5	30	SS-4110815-SP	1	31	SS-7110910-TP	5	7	WP-0371016-SD	7	11
			SS-4111215-SP	1	2	SS-7110910-TP	8	23	WP-0450801-SD	11	23
SB-1200002-00	2	45				SS-7111410-SP	6	13	WP-0501046-SC	4	24
			SS-5090610-SP	1	42	SS-7111810-SP	7	7	WP-0502616-SD	5	43
SD-0380551-SL	1	37	SS-5110740-TP	13	2	SS-7112420-SP	5	41	WP-0612056-SD	5	38
SD-0470281-SP	8	19				SS-7120710-SP	5	32	WP-0621016-SD	6	5
SD-0640322-TP	2	54	SS-6090520-SP	9	16	SS-7120760-SP	2	47	WP-0621016-SD	14	2
SD-0640701-SP	4	22	SS-6090620-TP	9	21	SS-7150740-SP	4	40	WP-0650876-SD	6	29
SD-0700451-TP	10	18	SS-6090810-SP	7	12	SS-7150910-TP	1	17	WP-0850002-SP	7	6
SD-0800402-TP	5	14	SS-6090910-SP	5	33	SS-7151610-SP	14	4			
SD-0800481-SP	4	44	SS-6090910-TP	4	55	SS-7621040-SP	1	10	WS-0610002-KN	14	3
SD-0900701-TP	6	22	SS-6091022-TP	3	19				WS-0610002-KP	5	39
SD-1000801-SH	5	58	SS-6110480-SP	11	31	SS-8110422-TP	7	2			
			SS-6110520-TP	6	28	SS-8111010-TP	2	50			
SK-3241601-SC	13	14	SS-6110810-TP	9	19	SS-8150510-TP	7	33			
SK-3482500-SC	13	12	SS-6111010-SP	11	17	SS-8150522-TP	5	63			
			SS-6111210-SP	5	12	SS-8150550-TP	7	29			
SM-3031401-SE	13	21	SS-6120930-TP	5	51	SS-8150710-SP	4	5			
SM-6040800-SP	9	32	SS-6121210-TP	6	26	SS-8150710-TP	2	38			
SM-6051602-TP	10	8	SS-6121610-SP	6	21	SS-8150822-TP	2	36			